

PARTS MANUAL

EC-102 A Series

EC-103 A Series

EC-202 A Series

MODELS

Twin Post[®] Passenger Car and Light Truck Lifts

Serial NO.s 4C1 thru _____

Date Installed: _____ Installer: _____

Lift Serial Number: _____

Model Number: _____

Other Special Equipment: _____

WE RESERVE THE RIGHT TO MAKE CHANGES IN DESIGN OR ADD IMPROVEMENTS WITHOUT INCURRING THE OBLIGATION TO MAKE SUCH CHANGES IN LIFTS PREVIOUSLY MANUFACTURED.

PANZITTA SALES & SERVICE
72 George Avenue
Wilkes-Barre, PA 18705
570-822-6720 800-822-6720
www.panzittasales.com

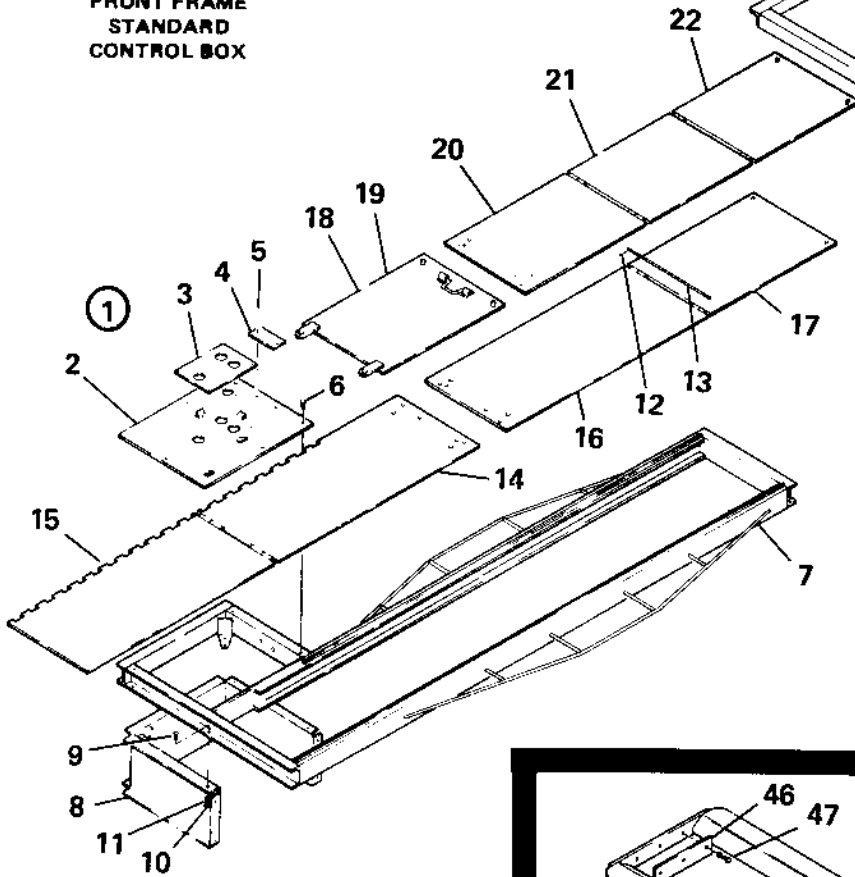
PART NUMBER 1085013

© DURA CORP. 1975

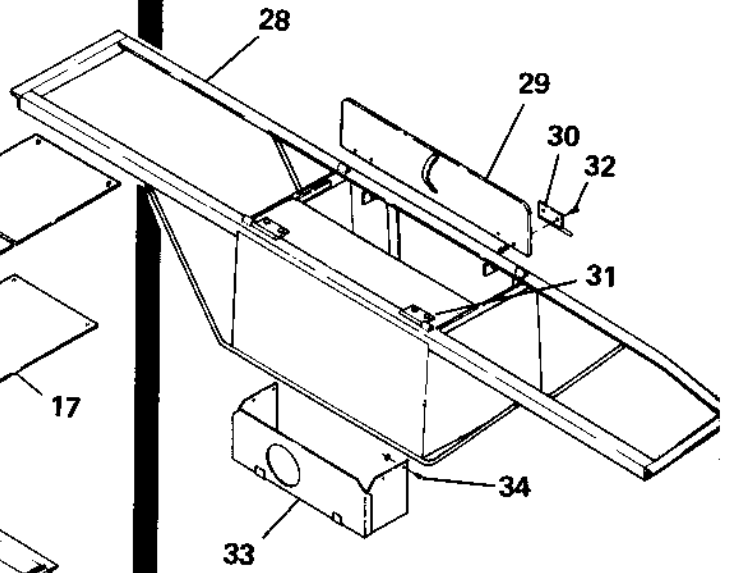
Thursday, July 15, 2004.max

Frames & Cover Doors

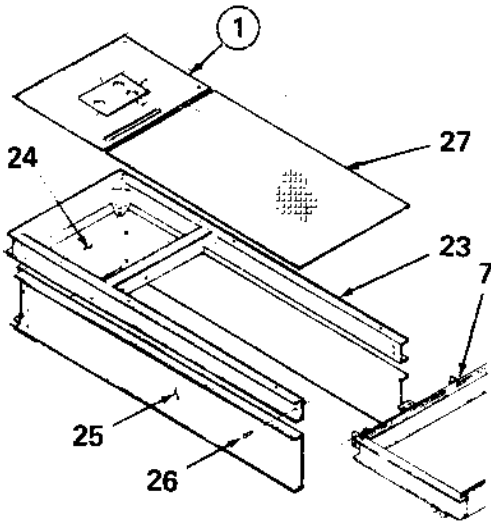
**FRONT FRAME
STANDARD
CONTROL BOX**



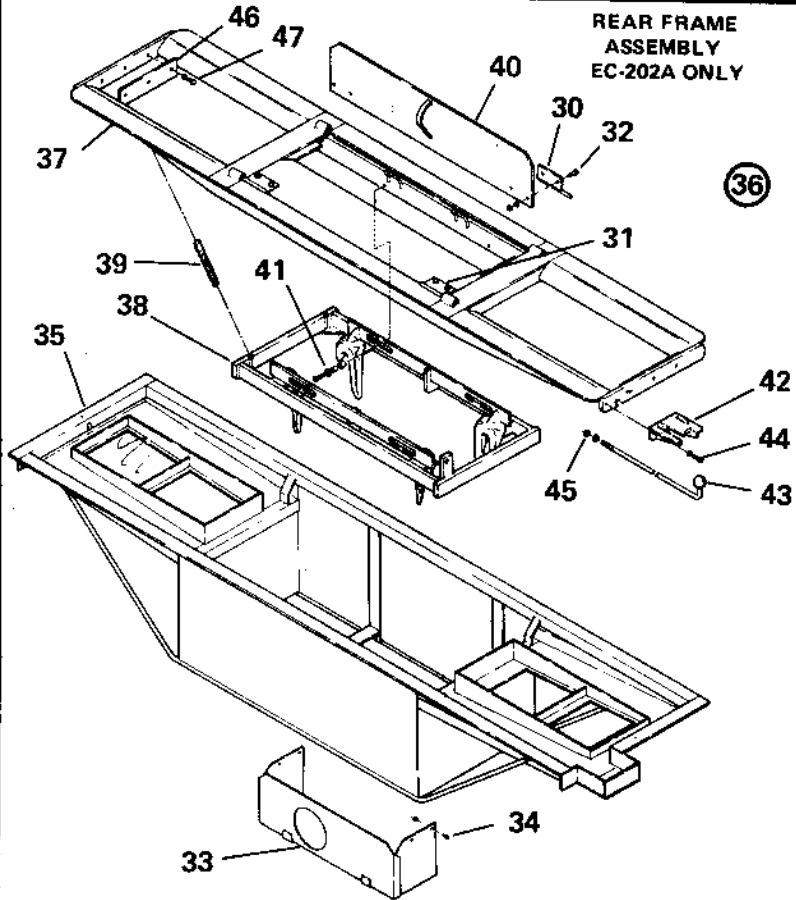
**REAR FRAME
ASSEMBLY
EC-102A & EC-103A
MODELS ONLY**



**FRONT FRAME WITH
EC-85A CONTROL BOX
EXTENSION**



**REAR FRAME
ASSEMBLY
EC-202A ONLY**



REPAIR PARTS LIST
PASSENGER TWIN POST LIFTS
EC-100; 100A; 101; 101A; 102; 102A; 103; 103A; 202; 202A; 203 & 203A
ORDER ALL PARTS BY PART NUMBER

ITEM NO.	PART NO.	DESCRIPTION	
1.	A-1664	Air Control Valve (EC-100, 100A, 102, 102A, 202 & 202A ONLY)	} For Valve Breakdown See Parts List LRP-24
2.	AS-20940	Air Control Valve Handle	
3.	A-1835	Oil Control Valve (EC-100, 100A, 102, 102A, 202 & 202A ONLY)	
	A-1889	Oil Control Valve (EC-101, 101A, 103, 103A, 203 & 203A ONLY)	
4.	A-1871	Oil Control Valve Handle	
	AAS-11872	Feed Valve Handle (EC-101, 101A, 103, 103A, 203 & 203A ONLY)	
5.	S-7403	Hex Hd. Capscrew 1/2-13UNC x 1-1/4" lg.	
6.	S-512	Lockwasher 1/2	
7.	S-25854	Control Box Cover (EC-100, 100A, 102, 102A, 202 & 202A ONLY)	
	S-25855	Control Box Cover (EC-101, 101A, 103, 103A, 203 & 203A ONLY)	
8.	S-4515	Drive Screw 2 x 3/16" lg.	
9.	S-12260	Name Plate (EC-100, 100A, 102 & 102A ONLY)	
	S-12281	Name Plate (EC-101, 101A, 103 & 103A ONLY)	
	S-19299	Name Plate (EC-202 & 202A ONLY)	
	S-19300	Name Plate (EC-203 & 203A ONLY)	
10.	S-12057	A. L. I. Plate	
11.	S-11324	Hex Hd. Capscrew 3/8-24UNF x 1" lg.	
12.	S-19909	Washer 3/8	
13.	S-275	Cotter 1/8 Dia. x 3/4" lg.	
14.	S-5977	Hinge Pin	
15.	*****	See Cover Plate Chart LRP-29A	
16.	AS-25517	Front Saddle	
17.	S-18894	Link	
18.	AS-16624	Spotting Device - includes Items 13, 17 & 19	
19.	S-14089	Rollpin 1/8 Dia. x 7/8" lg.	
20.	M-2046	Front Adapter	
21.	S-16713	Locating Pin	
22.	M-2057	Adapter Extension	
23.	S-12617	Rollpin 3/16 Dia. x 1" lg.	
24.	S-9249	Hex Nut 5/8-11UNC	
25.	S-21137	Washer 5/8	
26.	S-12977	Wiper Ring (See Note 1)	
27.	S-5826	Wiper Ring Retainer	
28.	S-5885	Wiper Packing (See Note 1)	
29.	S-13121	Grease Fitting	
30.	M-1551	Front Packing Gland	
31.	S-5857	Chevron Packing (See Note 1)	
32.	A-1325	Packing Follower	
33.	S-595	Hex Nut 3/8-16UNC	
34.	S-1325	Lockwasher 3/8	
35.	KL-179	Front Plunger - includes Item 30	
36.	AS-25520	Front Tube (See Note 2)	
	AS-5795	Front Tube (See Note 3)	
37.	AS-25530	Front Tube & Plunger Complete - Includes Items 24 thru 36 (See Note 2)	
	AAS-5795	Front Tube & Plunger Complete - Includes Items 24 thru 38 (See Note 3)	
38.	S-950	Hex Hd. Capscrew 3/8-16UNC x 5/8" lg. (See Note 3)	
39.	S-12068	Washer 17/32 I.D. x 1 O.D. x 1/16 (See Note 3)	
40.	S-22613	Spacer Nut (See Note 3)	
41.	S-19704	Grease Fitting	
42.	S-355	Cotter 3/16 Dia. x 1-1/4" lg. (See Note 3)	
43.	S-11249	Washer 29/32 I.D. x 1-5/8 O.D. x 1/16	
44.	S-16422	Bearing	
45.	M-1324	Wheel	
46.	S-5840	U-Bolt (See Note 3)	
47.	S-5836	Axle (See Note 3)	
48.	AS-5836	Axle Ass'y. - includes Items 41 thru 45 & 47 (See Note 3)	
49.	S-25514	Bolt (See Note 2)	
50.	S-26277	Spacer (See Note 2)	
51.	S-1934	Hex Jam Nut 3/8-16UNC	
52.	S-26836	Retaining Ring (See Note 2)	
53.	S-26838	Axle (See Note 2)	
54.	S-26837	Grooved Pin (See Note 2)	
55.	AS-26839	Axle Ass'y. - Includes Items 41, 43, 44, 45, 52 thru 54 (See Note 2)	
56.	S-7269	Hose 3/4" I.D. x 9 ft. lg.	
57.	AS-11039	Shift Lever	
58.	S-944	Hex Hd. Capscrew 3/8-16UNC x 1-1/4" lg.	
59.	A-1834	Shift Lever Socket	
60.	AS-26200	Front Frame (Consult Factory For Various Lengths)	

PANZITTA SALES & SERVICE
72 George Avenue
Wilkes-Barre, PA 18705
570-822-6720 800-822-6720
www.panzittasales.com

REPAIR PARTS LIST PASSENGER TWIN POST LIFTS

EC-100; 100A; 101; 101A; 102; 102A; 103; 103A; 202; 202A; 203 & 203A

ORDER ALL PARTS BY PART NUMBER

ITEM NO.	PART NO.	DESCRIPTION	ITEM NO.	PART NO.	DESCRIPTION
61.	S-5833	Control Box Form	79.	AS-25900	Cover Door—Current Style (See Parts List LRP-18 For Older Styles)
* 62.	S-21268	Hex Nut 1/4-20UNC	80.	AS-27201	Rear Frame Ass'y. Complete - Includes Items 62, 63, 73 thru 79 (EC-100, 101, 102 & 103 ONLY)
* 63.	S-6856	Rd. Hd. Mach. Screw 1/4-20UNC x 3/4" lg.	81.	AS-26817	Rear Frame (EC-202A & 203A ONLY)
64.	M-1323	Rear Packing Gland	AS-19198	Rear Frame (EC-202 & 203 ONLY)	
65.	S-15736	Lid Support	* 82.	S-8972	Hex Nut 7/16-14UNC
66.	M-2277	Rear Adapter (EC-102, 102A, 103, 103A, 202, 202A, 203 & 203A ONLY)	83.	AS-19236	Slide Ass'y.
	2161	Rear Adapter Obs. Must Order Item (86) M-2277, 2 Req'd.	84.	S-19231	Spring
67.	AS-20201	Rear Saddle & Adapter (EC-100, 100A, 101 & 101A ONLY)	* 85.	S-105	Hex Hd. Capscrew 3/8-16UNC x 1" lg.
	KL-152	Rear Saddle & Adapter (EC-100 & 101 W/8-1/2" High Adapters ONLY)	* 86.	S-14316	Washer 3/8 I.D. x 7/8 O.D. x 1/16
68.	AS-25550	Rear Saddle (EC-102, 102A, 103 & 103A ONLY)	87.	S-19233	Roller
	AS-25692	Rear Saddle (EC-202, 202A, 203 & 203A ONLY)	88.	S-19232	Spacer
* 69.	S-20374	Sq. Hd. Set Screw 7/16-14UNC x 3/4" lg.	89.	S-20958	Stabilizer
70.	KL-180	Rear Plunger - Includes Item 64	* 90.	S-3277	Lockwasher 3/8
71.	AS-25873	Rear Tube (See Note 2)	* 91.	S-22355	Hex Hd. Capscrew 3/8-16UNC x 5/8" lg.
	AS-5802	Rear Tube (See Note 3)	92.	AS-23702	Cover Door—Current Style (See Parts List LRP-18 For Older Styles)
72.	AS-25674	Rear Tube & Plunger Complete - Includes Items 24 thru 29, 31, 32, 64, 70 & 71 (See Note 2)	93.	AS-23757	Wheel Adapter
	AAS-5802	Rear Tube & Plunger Complete - Includes Items 24 thru 29, 31, 32, 64, 70 & 71 (See Note 3)	94.	M-2120	Shift Lever Bracket
73.	AS-26851	Rear Frame (EC-100A, 101A, 102A & 103A ONLY)	95.	AS-19234	Shift Rod
	AS-20189	Rear Frame (EC-100, 101, 102 & 103 ONLY)	* 96.	S-7428	Hex Hd. Capscrew 5/16-18UNC x 3/4" lg.
74.	AS-26811	Conduit Form (See Note 2)	* 97.	S-1882	Lockwasher 5/16
	AS-20198	Conduit Form (See Note 3)	98.	AS-23754	Wheel Adapter Ass'y. - Includes Items 62, 75 thru 78 & 82 thru 97
75.	AS-23749	Left Hinge Ass'y.	99.	AS-28258	Oil Reservoir-Air Oil Models (See Parts List LRP-22B for Low Oil Lock)
* 76.	S-21588	Lockwasher 1/4	100.	*****	Power Unit-Elect Oil Models (See Parts List LRP-27 for components)
77.	AS-23748	Right Hinge Ass'y.	* 101.	S-28002	Groove Pin 3/8 Dia. x 1 1/2" lg.
* 78.	S-21321	Hex Hd. Capscrew 1/4-20UNC x 3/4" lg.	* 102.	S-18835	Roll Pin 3/8 Dia. x 1 1/2" lg.

PANZITTA SALES & SERVICE

72 George Avenue

Wilkes-Barre, PA 18705

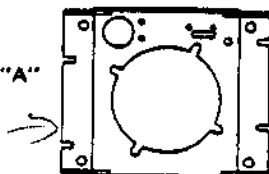
570-822-6720 800-822-6720

www.panzittasales.com

NOTES

1. Item 26, 28 & 31 may be purchased as Packing Kit KL-161.
2. Item indicated are used on EC-100A, 101A, 102A, 103A, 202A & 203A Series Lifts only. See Illustration "A" Below.
3. Items indicated are used on EC-100, 101, 102, 103, 202 & 203 Series Lifts only. See Illustration "B" Below.
4. Item numbers with an asterisk (*) indicates standard hardware and can be purchased locally.

ILLUSTRATION "A"



TOP VIEW OF FRONT TUBE & CARRIAGE ASSEMBLY

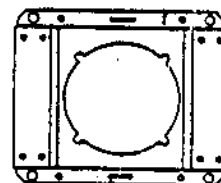


ILLUSTRATION "B"

WEAVER PARIS DIVISION

DURA CORPORATION

16061987-22-0

LRP-15A

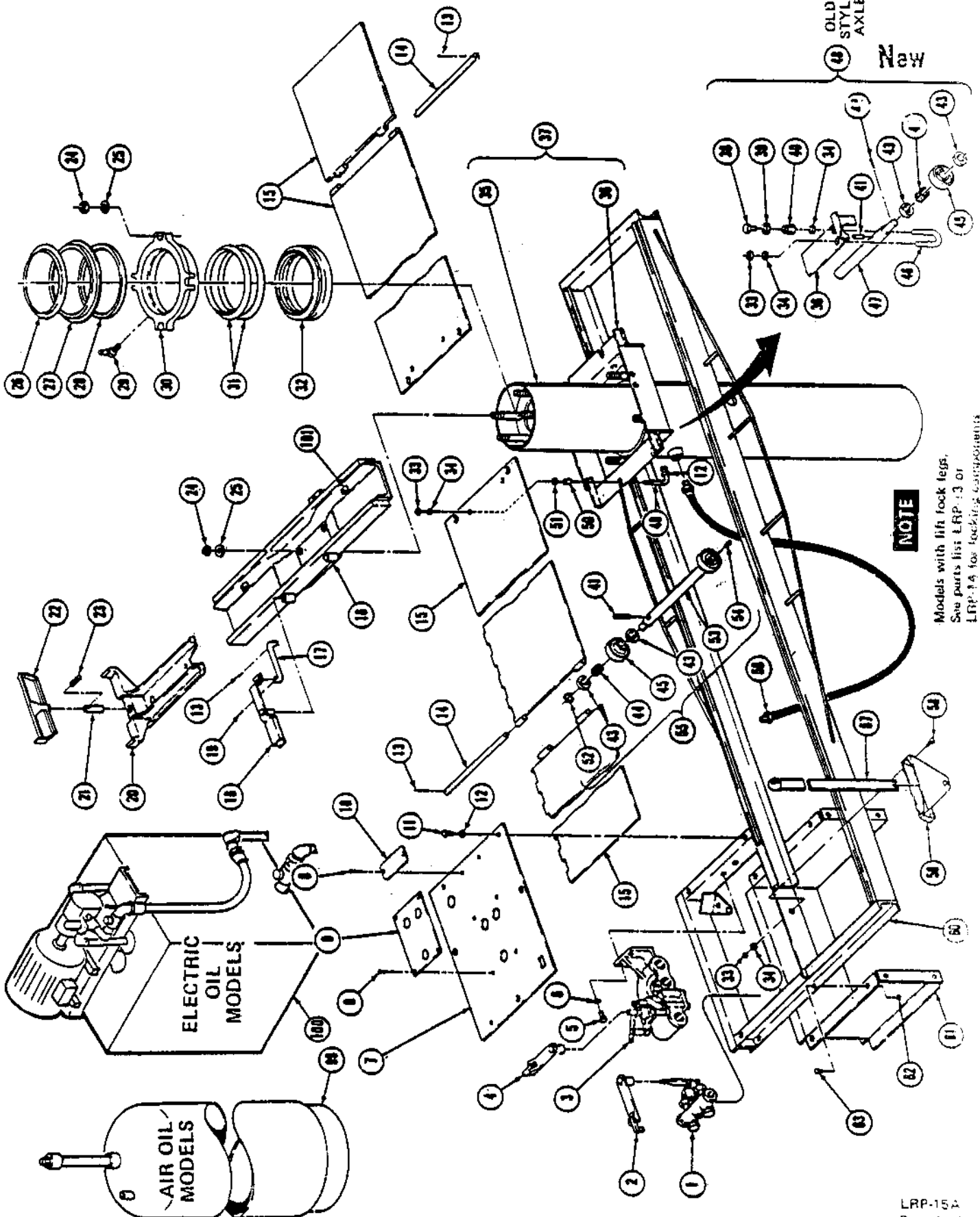
REPAIR PARTS LIST PASSENGER TWIN POST LIFTS

EC-100; 100A; 101; 101A; 102; 102A; 103; 103A; 202; 202A; 203 & 203A

ORDER ALL PARTS BY PART NUMBER

Revised

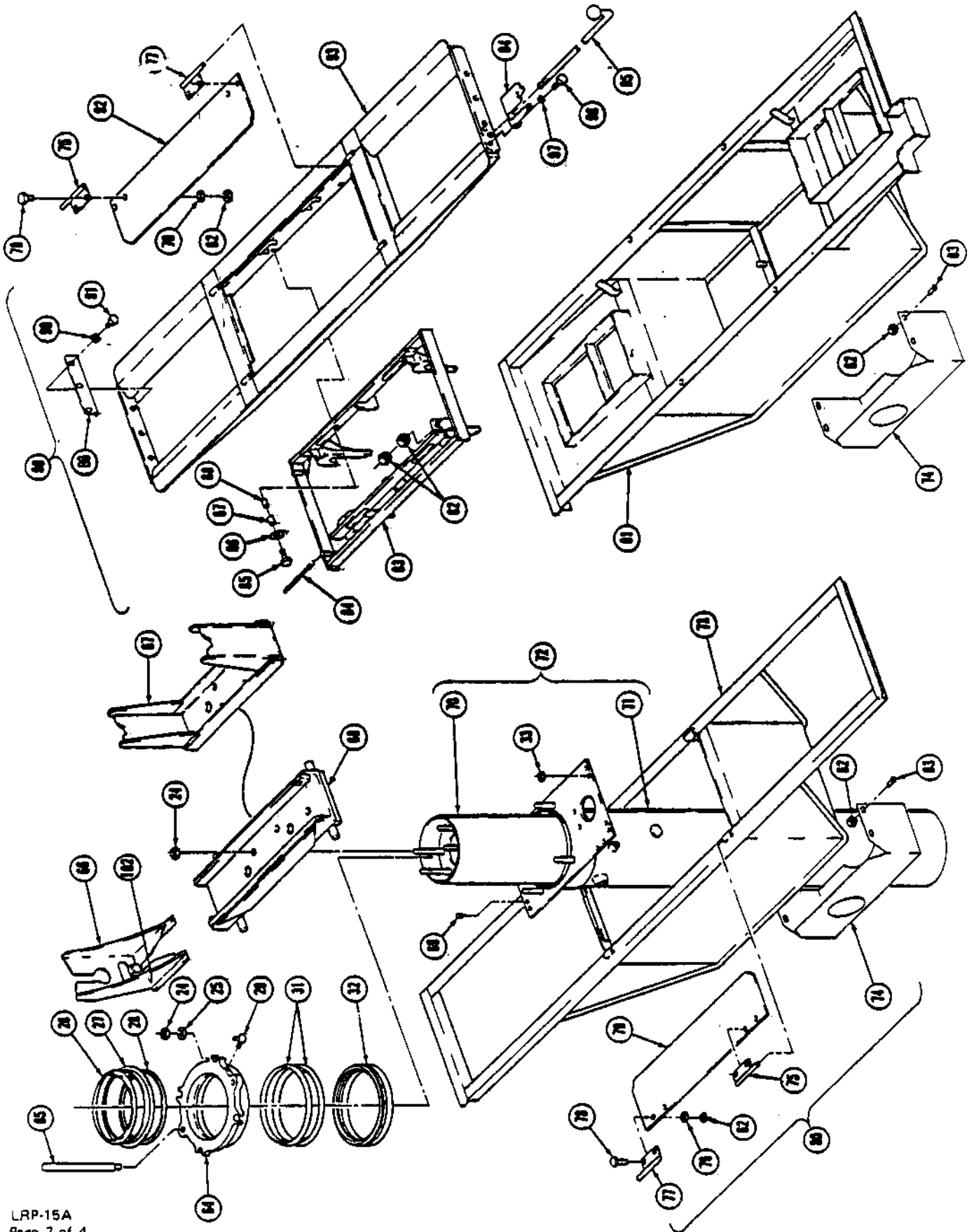
or Edition



NOTE

Models with lift lock legs.
See parts list LRP-13 or
LRP-14 for locking components

REPAIR PARTS LIST
PASSENGER TWIN POST LIFTS
EC-100; 100A; 101; 101A; 102; 102A; 103; 103A; 202; 202A; 203 & 203A
ORDER ALL PARTS BY PART NUMBER



PANZITTA SALES & SERVICE
72 George Avenue
Wilkes-Barre, PA 18705
570-822-6720 800-822-6720
www.panzittasales.com

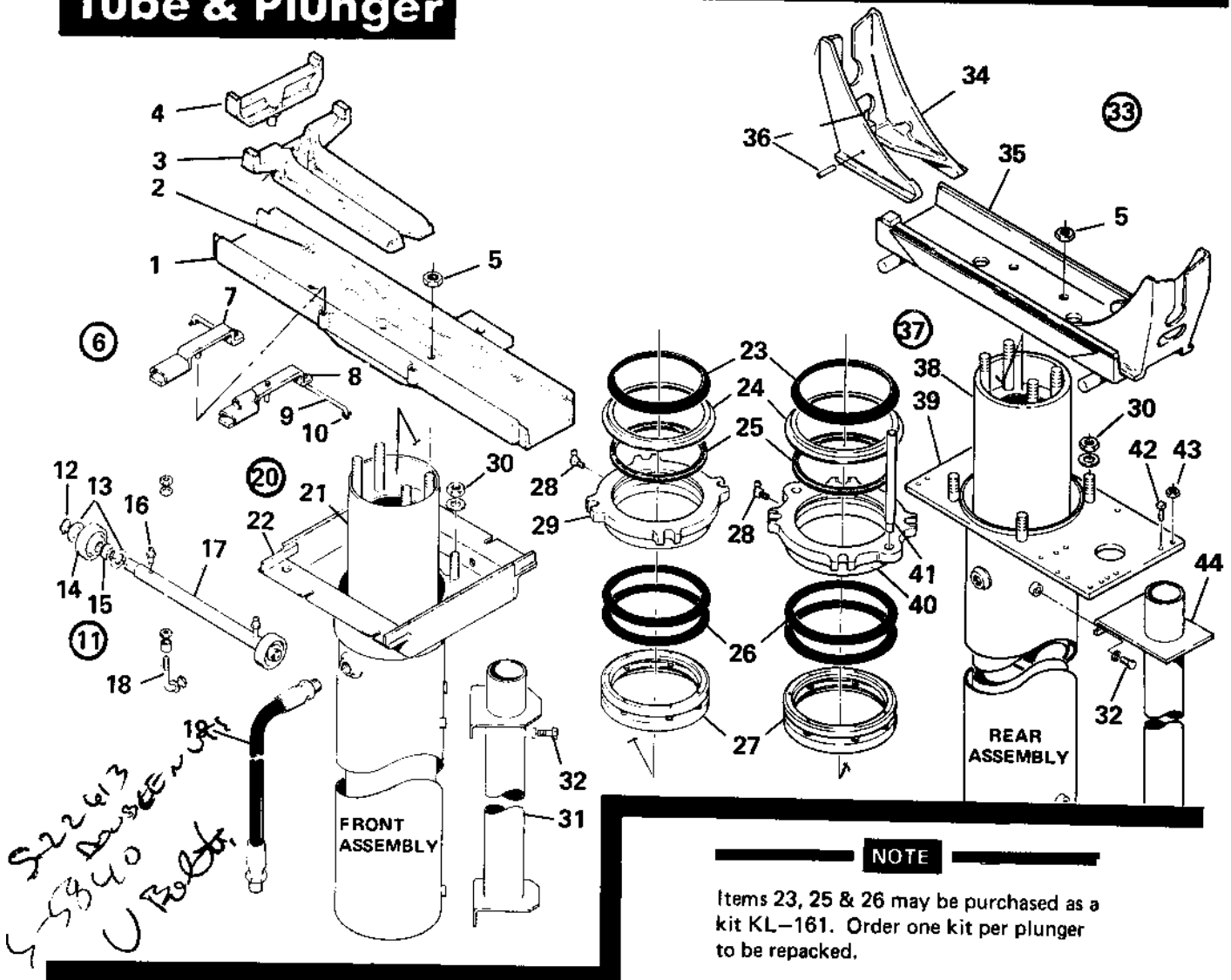
Frames & Cover Doors

ITEM NO	PART NO	QTY	DESCRIPTION	ITEM NO	PART NO	QTY	DESCRIPTION
1.	AS-25856	1	Cover Ass'y (EC-102)	24.	S-21292	1	End Panel
	AS-26984	1	Cover Ass'y (EC-102 W/EC-85)	25.	S-21293	2	Side Panel
	AS-25694	1	Cover Ass'y (EC-103)	26.	{S-105	4	Capscrew 3/18 - 16 x 1
	AS-26987	1	Cover Ass'y (EC-103 W/EC-85)		{S-595	4	Hex Nut 3/8 - 16
	AS-25695	1	Cover Ass'y (EC-202)	27.	S-6417	1	Extension Cover
	AS-26986	1	Cover Ass'y (EC-202 W/EC-85)	28.	AS-26851	1	Rear Frame (EC-102 & 103)
2.	S-25854	1	- Cover (EC-102 & 202)	29.	AS-25900	2	Door
	AS-27258	1	- Cover (EC-102 & 202 W/EC-85)	30.	AS-23748	2	R.H. Hinge
	S-25855	1	- Cover (EC-103)	31.	AS-23749	2	L.H. Hinge
	AS-27259	1	- Cover (EC-103 W/EC-85)		{S-21321	8	Capscrew 1/4 - 20 x 3/4
3.	S-12260	1	- Nameplate (EC-102)	32.	{S-21318	8	Flat Washer 9/32 I.D.
	S-12261	1	- Nameplate (EC-103)		{S-21268	8	Hex Nut 1/4 - 20
	S-19299	1	- Nameplate (EC-202)	33.	AS-26611	1	Conduit Form
4.	1081052	1	- A.L.I. Plate		{S-6656	4	Mach. Screw 1/4 - 20 x 3/4
5.	S-4515	6	- Drivescrew No. 2 x 3/16		{S-21268	4	Hex Nut 1/4 - 20
6.	S-11324	3	Capscrew 3/8 - 24 x 1	35.	AS-26617	1	Rear Frame (EC-202)
7.	AS-26800	1	Front Frame - Std - (See Note 1)	36.	AS-23754	1	Wheel Adapter Ass'y
	AS-28225	1	Front Frame - W/EC-85 - (See Note 1)	37.	AS-23757	1	- Wheel Adapter
8.	S-5833	1	Control Box Form	38.	AS-19236	1	- Slide
9.	S-6656	4	Mach. Screw 1/4 - 20	39.	S-19231	2	- Spring
10.	S-21268	4	Hex Nut 1/4 - 20	40.	AS-23702	2	- Door
11.	S-19909	4	Washer 13/32 I.D.		{S-105	4	- Capscrew 3/8 - 16 x 1
12.	S-275	4	Cotter 1/8 x 3/4	41.	{S-14316	4	- Washer
13.	S-5977	2	Hinge Pin		{S-19232	4	- Spacer
14.	AS-28017	1	{40"} Front Cover Plate		{S-19233	4	- Roller
15.	AS-28018	1	{40"} Front Sliding Plate	42.	M-2120	1	- Shift Lever Bracket
16.	AS-28019	1	{40"} Rear Cover Plate	43.	AS-19234	1	- Shift Rod
17.	AS-28020	1	{24"} Rear Sliding Plate		{S-7428	2	- Capscrew 5/16 - 18 x 3//
18.	AS-20670	1	{36"} Carry Around Plate	44.	{S-1882	2	- Lockwasher
19.	AS-20669	1	{24"} Carry Around Plate	45.	S-5972	2	- Hex Nut 7/16 - 14
20.	AS-28038	1	{23 - 5/16} Folding Plate	46.	S-20958	2	- Stabilizer Plate
21.	AS-28027	1	{20 - 1/16} Folding Plate	47.	{S-22355	6	- Capscrew 3/8 - 16
22.	AS-28026	1	{19 - 3/8} Folding Plate		{S-3277	6	- Int. Lockwasher
23.	AS-15392	1	Extension Frame				

NOTE

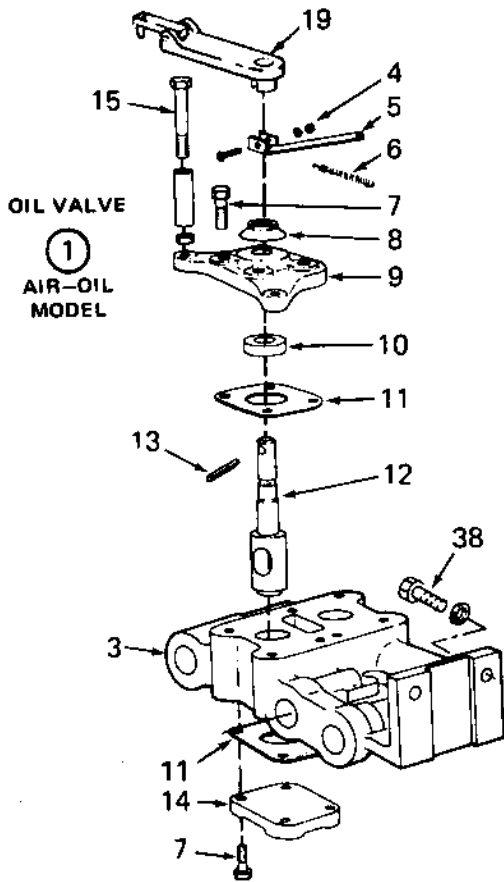
When ordering front frame (item 7), order by part number plus specify length.

Tube & Plunger

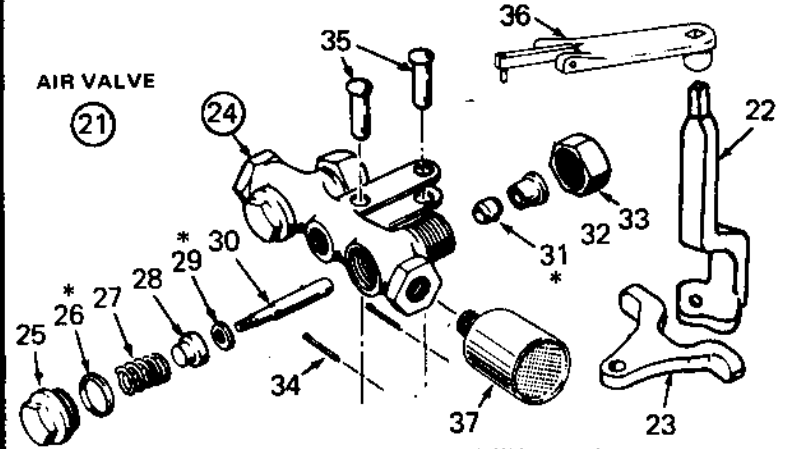


ITEM NO	PART NO	QTY	DESCRIPTION	ITEM NO	PART NO	QTY	DESCRIPTION
1.	AS-25517	1	Saddle	22.	AS-25520	1	Tube & Carriage
2.	S-28002	8	Groove Pin 3/8 x 1 1/2	23.	S-12977	1/1	Wiper Ring - See Note
3.	<u>M-2046</u>	2	Adapter	24.	S-5826	1/1	Wiper Ring Retainer
4.	A-2057	2	Adapter Extension	25.	S-5885	1/1	Packing - See Note
5.	S-9249	4/4	Hex Nut 5/8 - 11	26.	S-5857	2/2	Chevron Packing - See Note
6.	AS-16624	2	Spotting Device - Std Model	27.	A-1325	1/1	Packing Follower
	AS-19050	2	Spotting Device - With EC-85A	28.	S-13121	1/1	Grease Fitting
7.	AS-16454	1	Lever - Std. Model	29.	M-1551	1	Front Packing Gland
	AS-18966	1	Lever - With EC-85A	30.	S-9249	4/4	Hex Nut 5/8 - 11
8.	S-14089	1	Rollpin 1/8 x 7/8		S-21137	4/4	Washer 5/8
9.	S-18894	1	Link	31.	AS-25524	1	Guide Tube Front
10.	S-225	1	Cotter 1/8 x 3/4	32.	S-3292	3/3	Capscrew 1/2 - 13 x 7/8
11.	AS-26839	2	Axle Assembly		S-512	3/3	Lockwasher 1/2
12.	S-26836	2	Retaining Ring	33.	AS-25690	1	Rear Saddle and Adapter Ass'y - EC-102A & 103A
13.	S-11249	4	Washer		AS-25691	1	Rear Saddle and Adapter Ass'y - EC-202A
14.	M-1324	2	Wheel	34.	M-2277	2	Adapter
15.	S-16422	2	Bearing	35.	AS-25550	1	Rear Saddle - EC-102 & 103A
16.	S-19704	2	Grease Fitting		AS-25692	1	Rear Saddle - EC-202A
17.	S-26838	1	Axle	36.	S-18835	2	Rollpin
	S-25514	4	Bolt "L" Shaped	37.	AS-25674	1	Rear Tube & Plunger Ass'y
	S-19909	4	Washer	38.	KL-180	1	Plunger - Incl's item 40
18.	S-26277	4	Spacer	39.	AS-25673	1	Rear Tube
	S-1934	4	Jam Nut 3/8 - 16	40.	M-1323	1	Gland
	S-595	4	Hex Nut 3/8 - 16	41.	S-15736	2	Lid Support Rod
	S-1325	4	Lockwasher 3/8	42.	S-20374	2	Set Screw 7/16 - 14 x 3/4
19.	S-7269	1	Hose	43.	S-595	3	Hex Nut 3/8 - 16
20.	AS-25530	1	Front Tube & Plunger Ass'y.	44.	AS-25545	1	Guide Tube Rear
21.	KL-179	1	Plunger - Incl's item 29				

Control Valves



OIL VALVE
①
AIR-OIL
MODEL



* VALVE SEAT & PACKING PARTS (TWO EACH)

KEY: A/E A Air-Oil Model
 E Elec-Oil Model

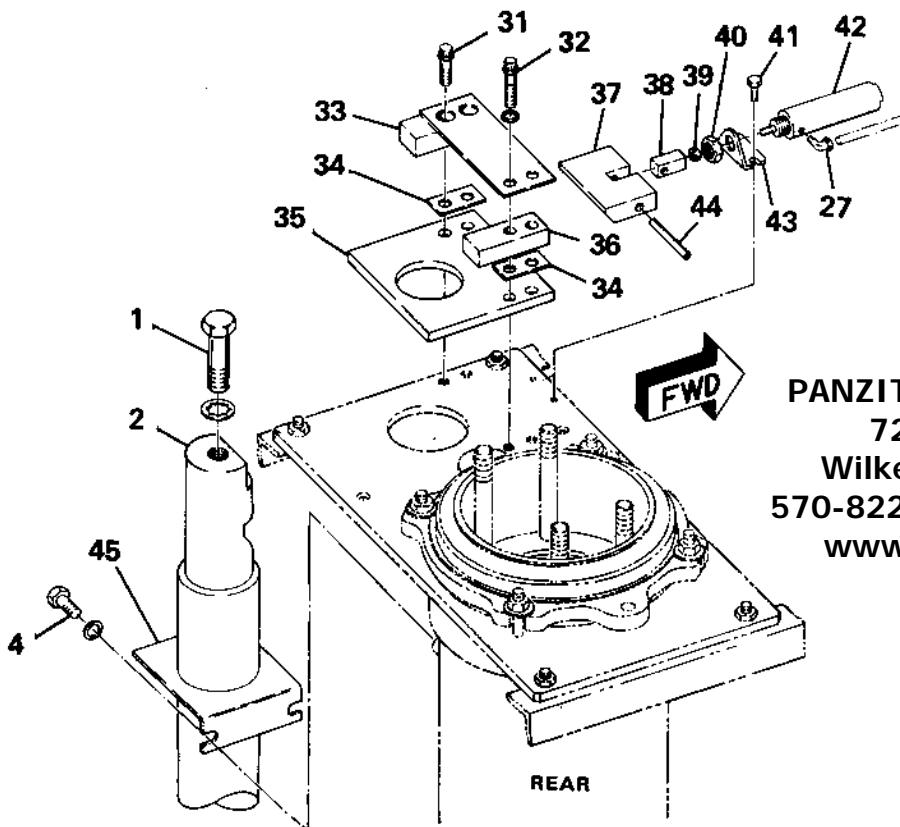
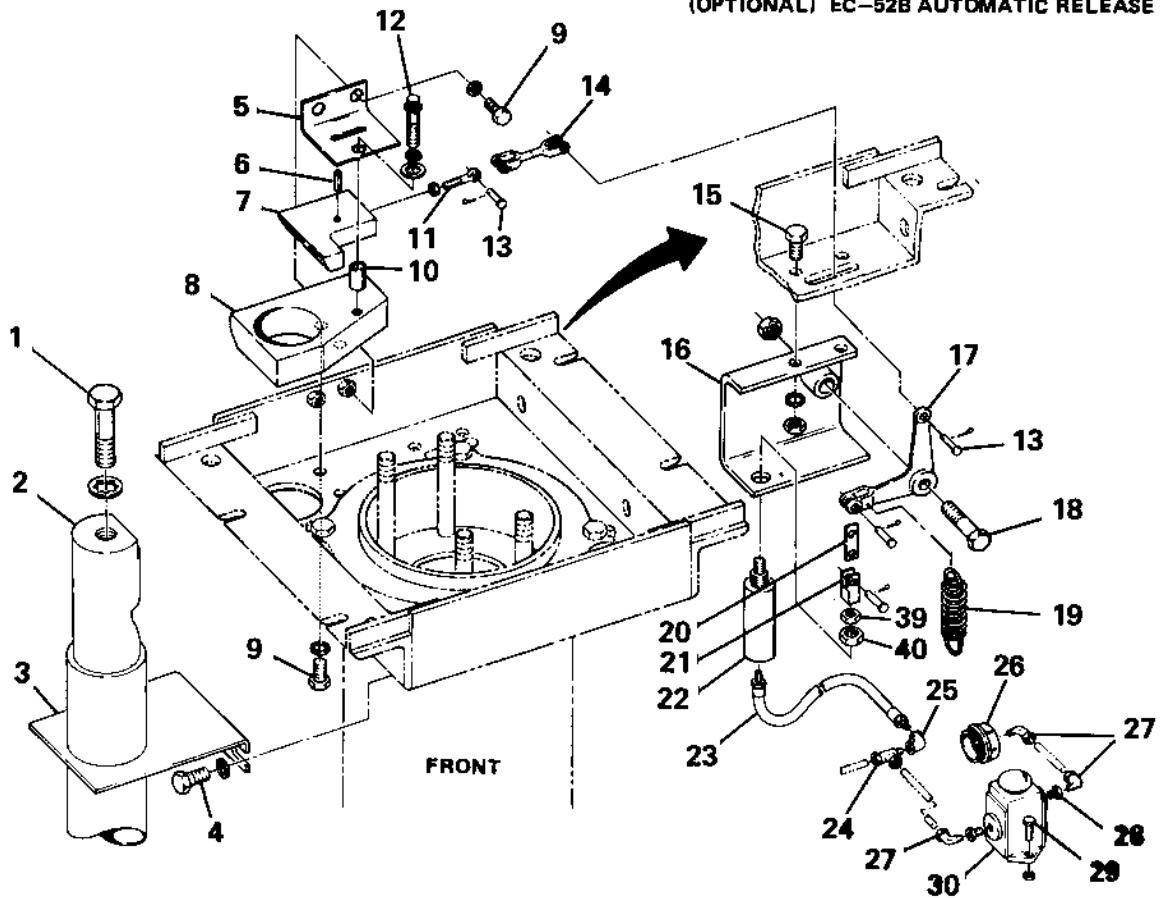
ITEM NO.	PART NO.	QTY	DESCRIPTION
1.	A-1835	1	Oil Valve - Items 3 thru 15
2.	A-1889	1	Oil Valve - Items 4 thru 18
3.	M-1835	1	- Valve Body
4.	S-11671	2/2	- Mach. Screw 10-32 x 1-1/4
	S-7074	2/2	- Lockwasher 3/16
	S-7483	2/2	- Hex Nut 10-32
5.	AS-12205	2/2	- Spring Lever
6.	S-11143	2/2	- Spring
7.	S-1204	16/24	- Capscrew 5/16-18 x 1
8.	S-18396	2/3	- Protector Cap
9.	M-2072	2/2	- Flange
10.	S-18957	2/3	- Seal
11.	S-11299	4/6	- Gasket
12.	S-11116	2/2	- Control Core - See Note
13.	S-15867	2/3	- Roll Pin (1/4 O.D. x 1)
14.	M-1845	2/3	- Valve Cap
15.	S-12141	2/2	- Capscrew 5/16-24 x 2-1/4
	S-11146	2/2	- Stop Hose
	S-7927	2/2	- Hex Nut 5/16-24
16.	M-2074	1	- Flange
17.	M-1830	1	- Intake Control Core - See Note
18.	M-1842	1	- Body
19.	A-1871	2/2	Valve Handle
20.	AAS-11672	1	Feed Valve Handle
21.	A-1664	1	Air Valve
22.	M-2200	1	- Crank
23.	M-2162	1	- Rocker Arm
24.	S-7176	1	- Valve
25.	1658	2	- Cap
26.	* S-25697	2	- Gasket
27.	S-8463	2	- Spring
28.	S-8462	2	- Seat - Base
29.	* S-8461	2	- Seat - Rubber
30.	S-8472	2	- Stem
31.	* S-8454	2	- Stem Packing
32.	S-8453	2	- Gland
33.	1659	2	- Packing Nut
34.	S-6829	2	- Cotter 3/32 x 3/4
35.	S-8459	2	- Clevis Pin
36.	AS-20940	1	Valve Handle
37.	S-20154	1	Muffer
38.	S-7403	2/2	Capscrew 1/2-13 x 1-1/4
	S-512	2/2	Lockwasher 1/2
	S-3481	2	Reducing Bushing 1" to 3/4"

NOTE

Standard core size for item 12 is 1.250 and item 17 is 1.500. In some cases oversize cores are used and dimensions are 1.300 and 1.550. When ordering parts add "OS" to part numbers when core is oversize.

Lift Locks

(OPTIONAL) EC-52B AUTOMATIC RELEASE



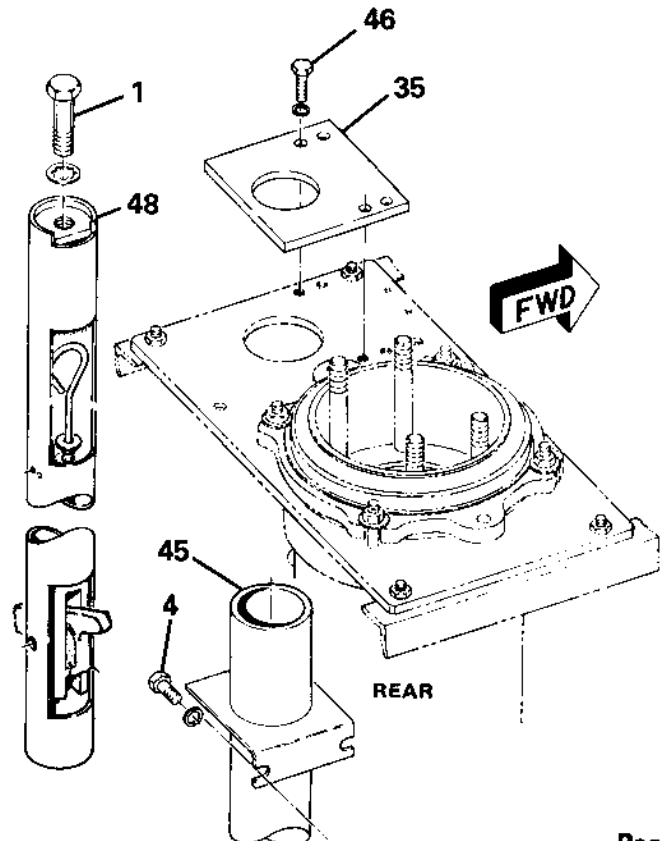
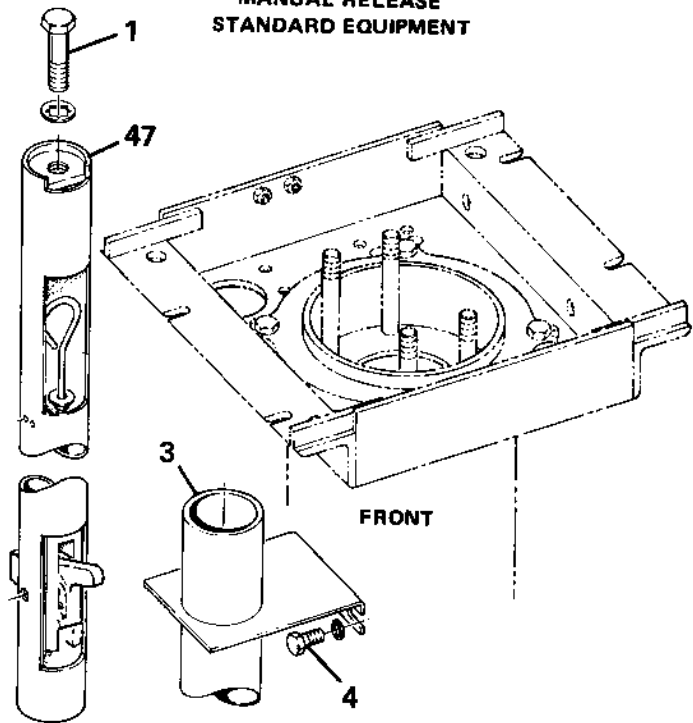
PANZITTA SALES & SERVICE
 72 George Avenue
 Wilkes-Barre, PA 18705
 570-822-6720 800-822-6720
www.panzittasales.com

Lift Locks

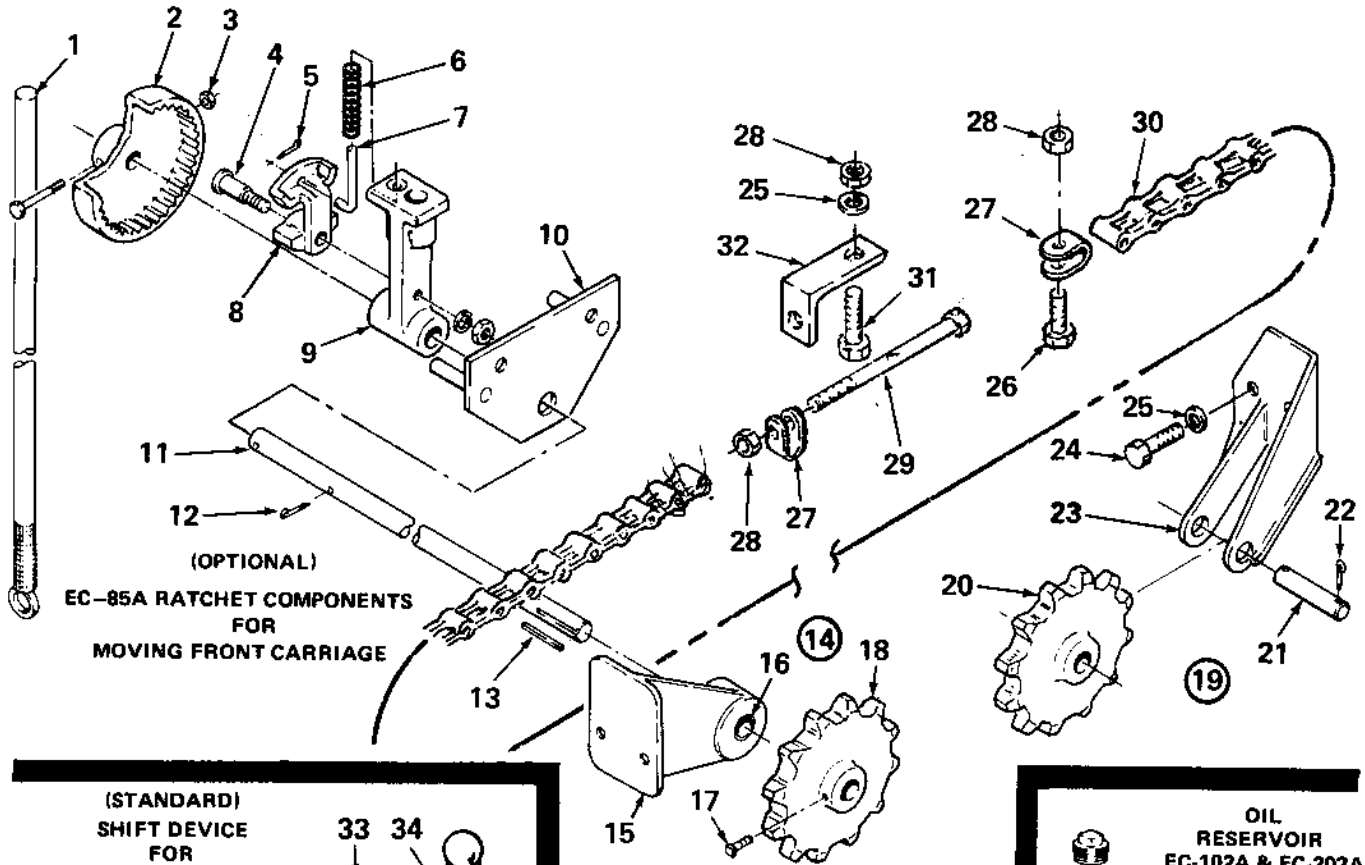
KEY: F/R F FRONT R REAR

ITEM NO	PART NO	QTY F/R	DESCRIPTION
1.	S-3535	1/1	Capscrew 3/4 - 10 x 2
	G-103326	1/1	Lockwasher 3/4
2.	1080800	1/1	Leg
3.	AS-25524	1	Guide Tube - Front
4.	S-3292	3/3	Capscrew 1/2 - 13 x 7/8
	S-512	3/3	Lockwasher 1/2
5.	S-27077	1	Guide
6.	S-15285	1	Rollpin
7.	S-27076	1	Pawl
8.	S-27075	1	Block
9.	S-175	4	Capscrew 3/8 - 16 x 3/4
	S-1325	4	Lockwasher 3/8
10.	S-27074	1	Spacer
11.	S-25536	1	Eye
	S-9172	1	Jam Nut 1/4 - 20
12.	S-27069	1	12 pt Capscrew 3/8 - 16 x 1-3/4
	S-1325	1	Lockwash 3/8
	S-19909	1	Washer 3/8
13.	S-25506	4	Pin
	S-380	4	Cotter
14.	AS-25509	1	Yoke
	S-105	2	Capscrew 3/8 - 16 x 1
15.	S-1325	2	Lockwasher 3/8
	S-595	2	Hex Nut 3/8 - 16
16.	AS-25500	1	Hanger
17.	M-2290	1	Lever
18.	S-6559	1	Capscrew 1/2 - 13 x 2-1/4
	S-4694	1	Hex Nut 1/2 - 13
19.	S-4716	1	Spring
20.	S-25504	1	Link
21.	S-25503	1	Clevis
22.	S-25502	1	Air Cylinder - Front
23.	S-18336	1	Hose
24.	S-20407	1	Tee
25.	S-20408	1	Elbow 1/8 NPT x 90°
26.	S-18326	1	Special Valve Cap - 102A & 202A
27.	AS-14122	4	Elbow 1/8 NPT x 1/4 TS x 90°
28.	S-14095	2	Bushing
29.	S-1877	2	Capscrew 1/4 - 20 x 3/4
	S-21268	2	Hex Nut 1/4 - 20
30.	S-18325	1	Button Valve
31.	S-26833	2	12 pt Capscrew 3/8 - 16 x 1-1/4
32.	S-27069	2	12 pt Capscrew 3/8 - 16 x 1-3/4
	S-1325	2	Lockwasher 3/8
33.	AS-27064	1	Guide
34.	S-27056	2	Shim
35.	S-27057	1	Plate
36.	S-27061	1	Block
37.	S-27058	1	Pawl
38.	S-27109	1	Clevis
39.	S-7927	1/1	Jam Nut 5/16 - 24
40.	S-2250	1/1	Jam Nut 5/8 - 18
41.	S-9123	2	Capscrew 1/4 - 20 x 3/8
42.	S-25534	1	Air Cylinder - Rear
43.	S-25532	1	Mounting Bracket
44.	S-22443	1	Rollpin 1/4 x 2-1/2
45.	AS-25545	1	Guide Tube - Rear
46.	S-6652	2	Capscrew 3/8 - 16 x 7/8
	S-1325	2	Lock Washer 3/8
47.	AS-25527	1	Leg Assembly - Front
48.	AS-25540	1	Leg Assembly - Rear

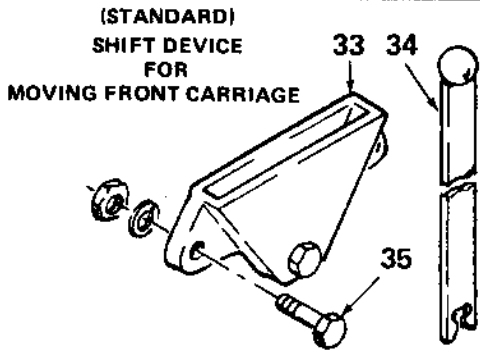
MANUAL RELEASE STANDARD EQUIPMENT



Ratchet & Oil Reservoir



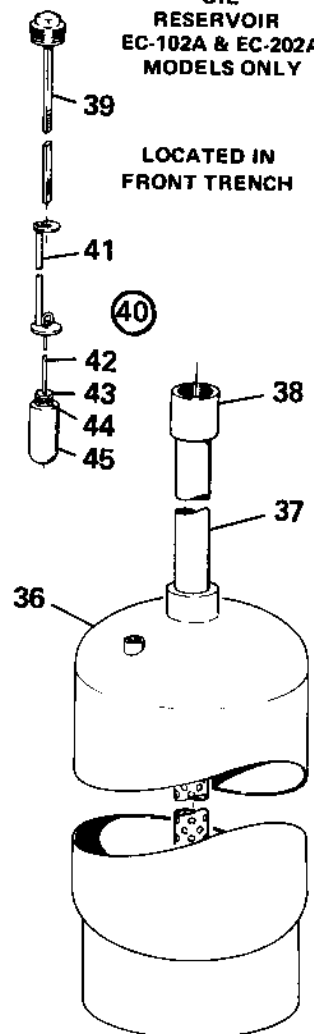
EC-85A RATCHET COMPONENTS
FOR
MOVING FRONT CARRIAGE



(STANDARD)
SHIFT DEVICE
FOR
MOVING FRONT CARRIAGE

OIL
RESERVOIR
EC-102A & EC-202A
MODELS ONLY

LOCATED IN
FRONT TRENCH

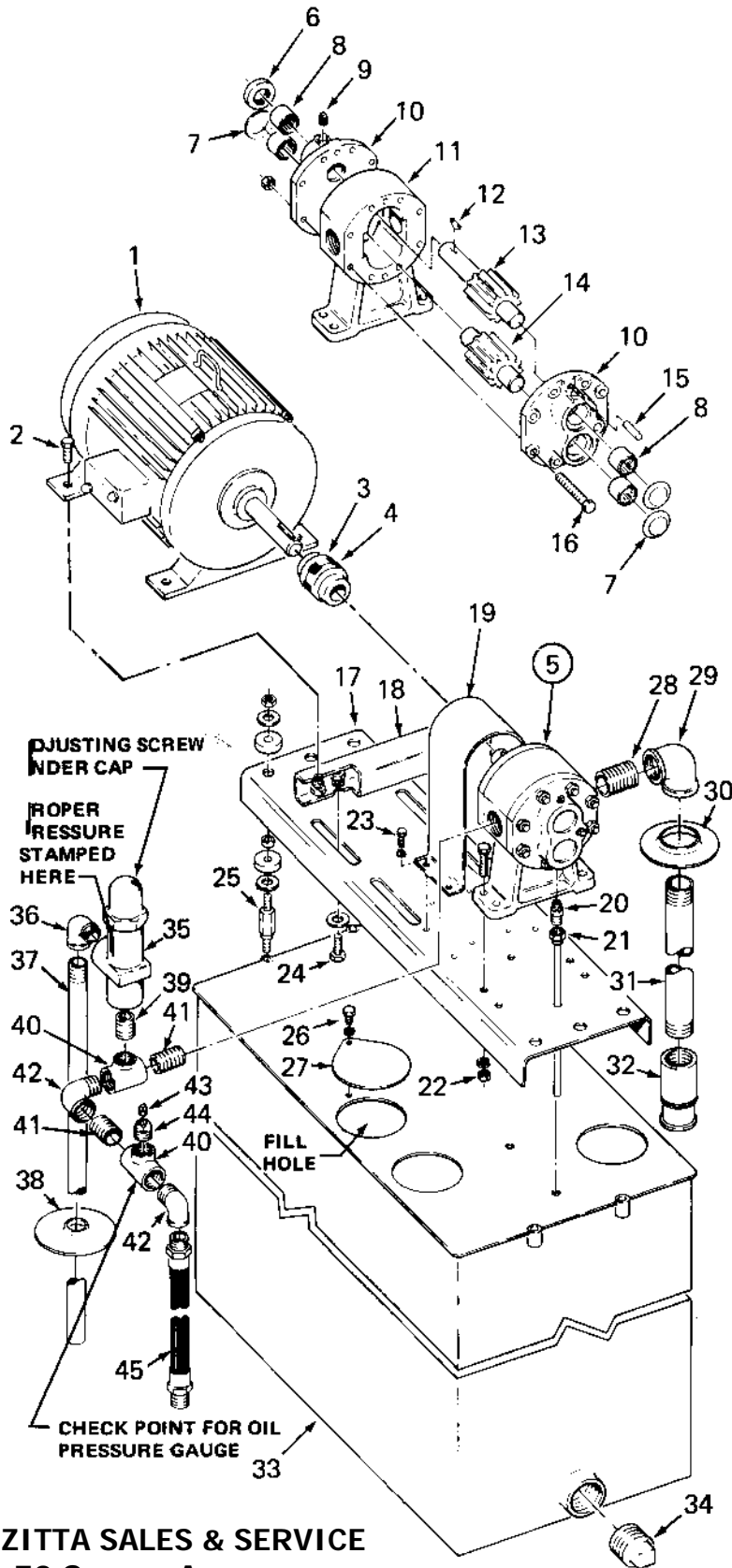


ITEM NO.	PART NO.	QTY	DESCRIPTION
1.	AS-16486	1	Shift Lever
2.	M-2213	1	Wheel
3.	S-27000	1	Capscrew 5/16-18 x 2-1/4
	S-1636	1	Hex Nut 5/16-18
	S-7382	1	Pin
4.	S-1325	1	Lockwasher 3/8
	S-595	1	Hex Nut 3/8-16
5.	S-380	1	Cotter 3/32 x 1/2
6.	S-2229	1	Spring
7.	S-8464	1	Guide Pin
8.	M-2199	1	Dog
9.	M-2314	1	Dog Lever
10.	AS-7392	1	Hanger Plate - 103A
	AS-15405	1	Hanger Plate - 102A & 202A
11.	S-28215	1	Shaft - (48-1/2" lg.)
12.	S-107	1	Cotter 1/8 x 1
13.	7389	1	Key
14.	AS-26408	1	Front Hanger Ass'y
15.	M-2315	1	- Hanger
16.	S-6034	1	- Bearing
17.	S-7221	1	Sq. Hd. Set Screw 3/8 x 1
18.	M-1574	1	Front Sprocket
19.	AS-28204	1	Rear Sprocket Hanger Ass'y
20.	M-1573	1	- Sprocket
21.	S-28216	1	- Pin
22.	S-107	2	- Cotter

ITEM NO.	PART NO.	QTY	DESCRIPTION
23.	AS-28219	1	- Hanger
24.	S-722	4	Capscrew 1/2-13 x 1
25.	S-512	5	Lockwasher 1/2
26.	S-6559	1	Hex Nut 1/2-13 x 2-1/4
27.	S-7391	2	Chain Fastener
28.	S-508	4	Hex Nut 1/2-13
29.	AS-20636	1	Adjusting Bolt
30.	S-15409	1	Chain - State Frame Length
31.	S-7403	1	Capscrew 1/2-13 x 1-1/4
32.	S-15408	1	Anchor Lug
33.	A-1834	1	Shift Lever Socket Ass'y
34.	AS-11039	1	Shift Lever
	S-944	2	Capscrew 3/8-16 x 1-1/4
35.	S1325	2	Lockwasher 3/8
	S-595	2	Hex Nut 3/8-16
36.	AS-28258	1	Oil Reservoir
37.	S-25104	1	1-1/2" Pipe
38.	S-25393	1	1-1/2" Coupling
39.	AS-25118	1	Gauge Rod
40.	AS-28272	1	Hanger Ass'y
41.	AS-28271	1	- Hanger
42.	S-15162	1	- Wire
43.	S-23263	1	- Capscrew
44.	S-21268	1	- Hex Nut 1/4-20
45.	S-23265	1	- Float

Power Unit

EC-103A MODELS ONLY



ITEM NO.	PART NO.	QTY	DESCRIPTION
1.			Electric Motor - Prices on request
2.	S-105	4	Capscrew 3/8-16 x 1
	S-3012	4	Lockwasher 3/8
	S-595	4	Hex Nut 3/8-16
3.	AS-20500	1	Coupling (1-3/8 Shaft)
	AS-5968	1	Coupling (1-1/8 Shaft)
4.	S-8547	1	- Fiber Spider
5.	AS-14418	1	Pump Ass'y
6.	S-14823	1	- Oil Seal
7.	S-1183	3	- Welsh Plug
8.	S-22390	4	- Bearing
9.	S-1805	2	- Pipe Plug 1/8
10.	M-2230	2	- Bearing Cap
11.	M-1995	1	- Pump Body
12.	S-2347	1	- Woodruff Key
13.	AS-14420	1	- Drive Gear
14.	AS-14423	1	- Driven Gear
15.	S-24847	4	- Dowel Pin
16.	S-14419	8	- Capscrew 3/8-24 x 4-1/2
	S-7573	8	- Hex Nut 3/8-24
17.	S-19673	1	Motor Support Frame
18.	S-15529	2	Motor Support
19.	S-14827	1	Shield
20.	S-2007	2	Tube Connector
21.	S-19710	2	Oil Drain Tube
22.	S-700	4	Capscrew 1/2-13 x 1-3/4
	S-512	4	Lockwasher 1/2
	S-12540	4	Hex Nut 1/2-13
23.	S-14098	4	Capscrew 3/8-16 x 1/2
	S-3277	4	Lockwasher 3/8
	S-3291	4	Capscrew 1/2-13 x 1-1/4
24.	S-1565	4	Washer 9/16 I.D.
	S-512	4	Lockwasher 3/8
	S-12540	4	Hex Nut 1/2-13
25.	S-19674	4	Mounting Stud
	S-1565	8	Washer 9/16 I.D.
	S-18999	8	Spacer
26.	S-15655	4	Damper
	S-12540	4	Hex Nut 1/2-13
	S-175	1	Capscrew 3/8-16 x 3/4
27.	S-11318	1	Hole Cover
	S-12175	1	Nipple 1-1/2 x 1-3/4
28.	S-20955	1	Elbow 1-1/2 x 90°
29.	S-20955	1	Elbow 1-1/2 x 90°
30.	S-20959	1	Pipe Collar
31.	S-20966	1	Pipe 1-1/2 x 37-5/8
32.	AS-20957	1	Foot Valve
33.	AS-19685	1	Reservoir (120 Gal EC-61)
	AS-19690	1	Reservoir (170 Gal EC-62)
	AS-25564	1	Reservoir (170 Gal EC-66)
34.	S-7359	1	Pipe Plug
35.	AS-22533	1	Pressure Relief Valve (See Note)
36.	S-5942	1	Street Elbow 1 x 90°
37.	S-19695	1	Pipe 1 x 45
38.	S-6225	1	Pipe Collar
39.	S-19742	1	Nipple 1 x 1-1/2
40.	S-17222	2	Reducing Tee 1-1/4 x 1-1/4 x 1
41.	S-19672	2	Nipple 1-1/4 x 1-5/8
42.	S-5944	2	Street Elbow 1-1/4 x 90°
43.	S-1836	1	Pipe Plug 1/4
44.	S-15461	1	Gauge Outlet Plug
45.	S-13801	1	Hose

NOTE

Pressure relief valve (item 35) serviced as a complete unit only.