

PARTS MANUAL

For Twin Frame Hydraulic Lifts



General Description - all models.

Two Post, air oil full hydraulic lifts with automatic lift lock and low oil lock. 8,000 lb. capacity with 150 psi air pressure. 70" piston travel. Displaces 27 gallons of oil.

Serial Numbers

Serial numbers are stamped around the piston at the top. A typical number may read 4CE10XM101.

How to Order Service Parts

Order all service parts by part number thru your nearest Weaver Lift Parts Warehouse or Distributor. For a complete list of Weaver Warehouses contact us and ask for form number 1342.

Optional Equipment

EC-154 floor controls, normally installed at time of lift installation. (page 6)

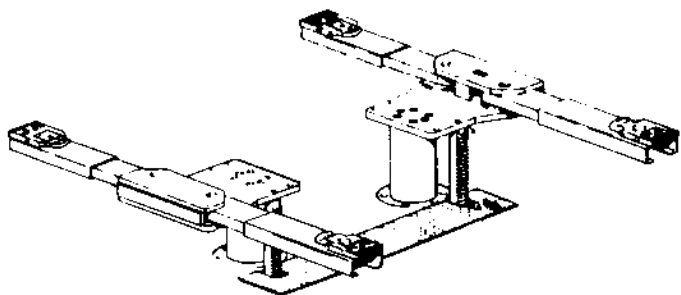
EC-292B Series

This two post lift is designed for use with alignment equipment manufactured by others.

NOTE: Capacity of this model lift will be as designated by the alignment equipment supplier.

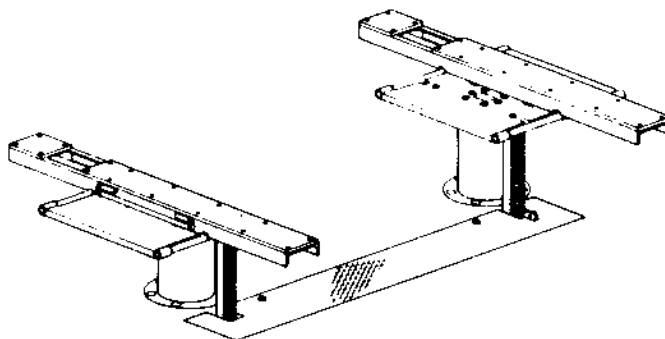
EC-881B Series

This twin frame lift may be used as a Drive-Over or Drive-Thru type, simply by removing the two rack bolts (item 18, page 7), rotating the plungers and superstructures 180°, and replacing the bolts.



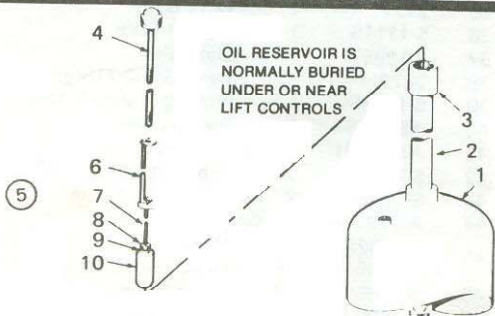
EC-885B Series

Twin frame lift with pad type superstructure to be used as drive over type only. Affords quick positioning of pad adapter to vehicle underbody.



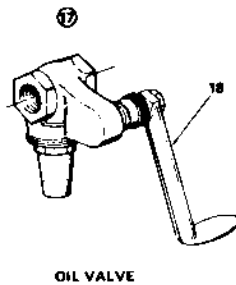
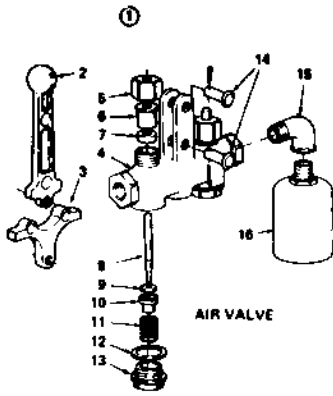
PANZITTA SALES & SERVICE
72 George Avenue
Wilkes-Barre, PA 18705
570-822-6720 800-822-6720
www.panzittasales.com

Oil Reservoir



ITEM NO.	PART NO.	QTY	DESCRIPTION
1	AS-28258	1	Reservoir
2	S-25104	1	1-1/2" Pipe
3	S-25393	1	1-1/2" Coupling
4	AS-25118	1	Gauge Rod
5	AS-28272	1	Float Hanger Assembly
6	AS-28271	1	— Hanger Assembly
7	S-15162	1	— Wire
8	S-23263	1	— Capscrew
9	S-21268	1	— Hex Nut 1/4-20
0	S-23265	1	— Float

Wall Controls



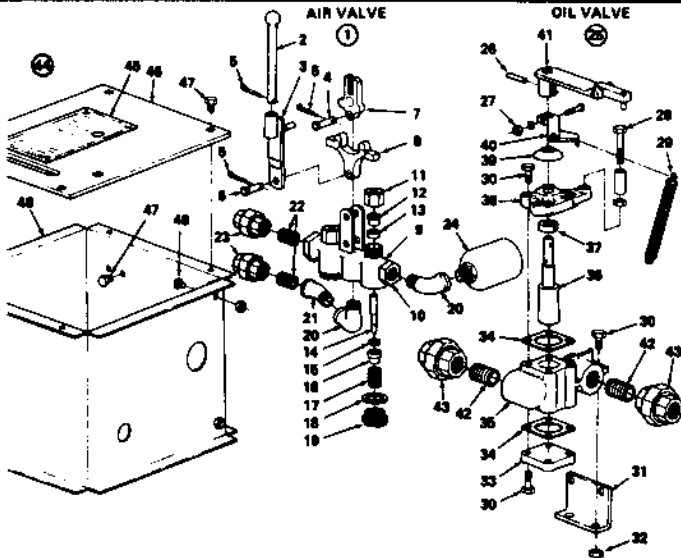
- To replace seats and packings on air valve (item 1), shut off air at source and exhaust all air from system. Remove cap (item 13), spring (11) and stem (8) from valve. Carefully unscrew seat base (10) from stem and replace seat (9). Remove packing nut (5), gland (6) and packing (7). Replace gasket (12) on cap and reassemble stem, spring and cap. Install new packing (7) and assemble gland and packing nut.

NOTE

Oil valve item 17 is serviced as a complete unit only.

ITEM NO.	PART NO.	QTY	DESCRIPTION
1.	AS-14797	1	Air Valve Ass'y
2.	M-1662	1	Handle
3.	M-2162	1	Rocker Arm
4.	S-7176	1	Air Valve
5.	M-1659	2	Packing Nut
6.	S-8453	2	Gland
7.	S-8454	2	Packing
8.	S-8472	2	Valve Stem
9.	S-8461	2	Seat Washer
10.	S-8462	2	Inlet Seat Washer
11.	S-8463	2	Inlet Spring
12.	S-25697	2	Gasket
13.	M-1658	2	Bottom Cap
14.	S-8459	2	Clevis Pin
	S-6829	2	Cotter 3/32 x 3/4
15.	S-5865	1	Street Ell 1/2 x 90°
16.	S-20154	1	Muffler
17.	AS-14765	1	Oil Valve Ass'y (See Note)
18.	S-21053	1	Handle

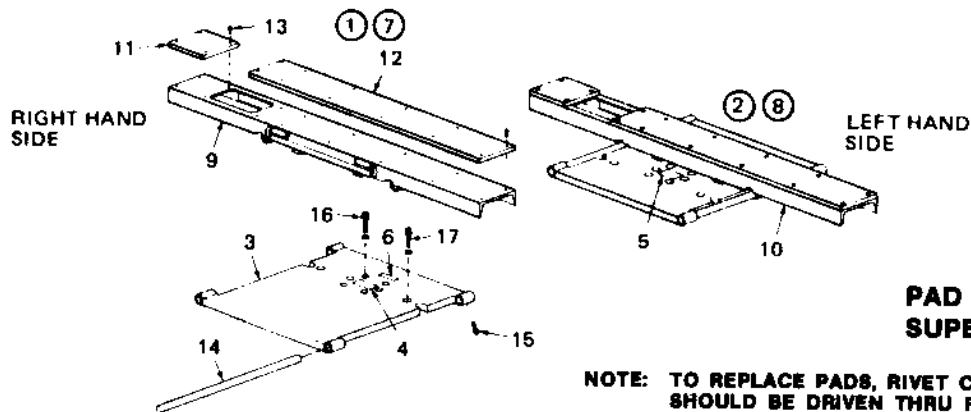
Floor Controls



ITEM NO.	PART NO.	QTY	DESCRIPTION
1.	AS-19347	1	Air Control Valve
2.	AS-19350	1	Handle
3.	AS-19348	1	Lever
4.	S-19357	1	Clevis Pin 3/8 x 1-1/4
5.	S-275	3	Cotter 1/8 x 3/4
6.	S-19358	1	Clevis Pin 3/8 x 1-3/8
7.	M-2126	1	Control Handle
8.	M-2162	1	Rocker Arm
9.	S-7176	1	Air Valve
10.	1664	1	Body
11.	1659	2	Packing Nut
12.	S-8453	2	Gland
13.	S-8454	2	Packing
14.	S-8472	2	Valve Stem
15.	S-8461	2	Seat Washer

ITEM NO.	PART NO.	QTY	DESCRIPTION
16.	S-8462	2	Seat Piece
17.	S-8463	2	Spring
18.	S-25697	2	Gasket
19.	1658	2	Valve Cap
20.	S-5865	2	Street Ell 1/2 x 90°
21.	S-19362	1	Street Ell 1/2 x 45°
22.	S-19740	2	Close Nipple 1/2 x 1-1/8
23.	S-13254	2	Female Union 1/2
24.	S-20154	1	Muffler
25.	AS-19359	1	Oil Control Valve
26.	S-15867	1	Roll Pin 1/4 x 1
27.	S-11671	1	Rd Hd Machine Screw
	S-7074	1	Lockwasher No. 10
	S-7483	1	Hex Nut No. 10
	S-12141	2	Capscrew 5/16-24 x 2-1/4
28.	S-11146	2	Hose Stop
	S-7927	2	Jam Nut 5/16-24
29.	S-11143	1	Dead Man Spring
30.	S-1204	10	Capscrew 5/16-18 x 1
31.	S-19360	1	Bracket
32.	S-1636	2	Hex Nut 5/16-18
33.	1845	1	Valve Cap
34.	S-11299	2	Valve Gasket
35.	2127	1	Valve Body
36.	S-11116	1	Control Core
37.	S-18957	1	Gland Seal
38.	2072	1	Valve Gland Flange
39.	S-18396	1	Packing Protector Cup
40.	AS-19363	1	Spring Lever
41.	AS-19361	1	Valve Handle
42.	S-19742	2	Close Nipple 1/2 x 1-1/2
43.	S-12374	2	Female Union 1
44.	AS-19345	1	Cover Plate Ass'y
	S-19328	1	Name Plate
	S-4515	4	Drive Screw No. 2 x 3/16
46.	S-20358	1	Cover Plate
47.	S-7428	6	Capscrew 5/16-18 x 3/4
48.	S-8912	2	Mach Screw No. 10-32 x 3/8
49.	AS-25708	1	Control Box Form

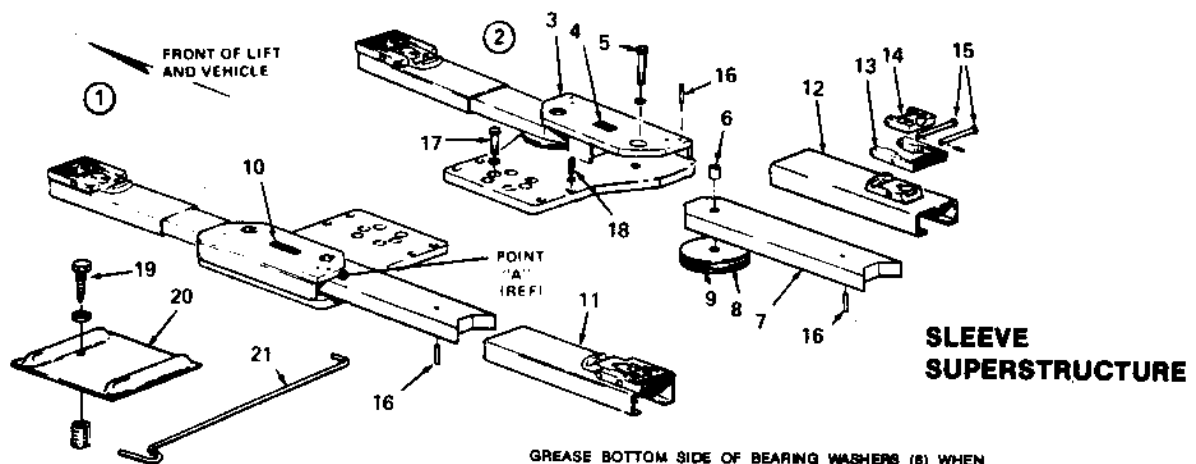
Superstructures



PAD SUPERSTRUCTURE

NOTE: TO REPLACE PADS, RIVET CENTER PIN SHOULD BE DRIVEN THRU RIVET WITH CENTER PUNCH.

ITEM NO.	PART NO.	QTY	DESCRIPTION	ITEM NO.	PART NO.	QTY	DESCRIPTION
1.	1082564	1	R.H Bolster Assembly	10.	1082447	1	—L. Pad
2.	1082565	1	L.H Bolster Assembly	11.	1082566	2	— Front Cushion
3.	1082441	2	— Bolster	12.	1082569	2	— Rear Cushion
4.	S-18577	1	— Name Plate (on item 1 only)	13.	1082571	32	— Drive Rivet
	S-4515	4	— Drive Screw	14.	1082457	4	Guide Rod
	S-25842	1	— Patent Label (on item 2 only)	15.	S-27078	4	Capscrew 1/4-20x1
	S-4515	2	— Drive Screw	16.	S-24641	12	Capscrew 3/4-10x3-1/2
6.	1081052	1	— ALI Plate		S-3010	12	Lockwasher 3/4
7.	1082573	1	R.H. Pad Assembly	17.	S-24297	2	12 pt. Capscrew 1/2-13x1-3/4
8.	1082570	1	L.H. Pad Assembly		S-512	2	Lockwasher 1/2
9.	1082573	1	— R.H. Pad				



SLEEVE SUPERSTRUCTURE

GREASE BOTTOM SIDE OF BEARING WASHERS (8) WHEN REPLACING ARM (7). ADD SUFFICIENT NUMBER OF SHIMS (9) TO OBTAIN .010 TO .020 CLEARANCE AT POINT "A" BETWEEN ARM AND TOP BOLSTER PLATE. ARM MUST SWING FREELY WHEN CAPSCREW (5) IS TORQUED TO 150 FT LBS MINIMUM.

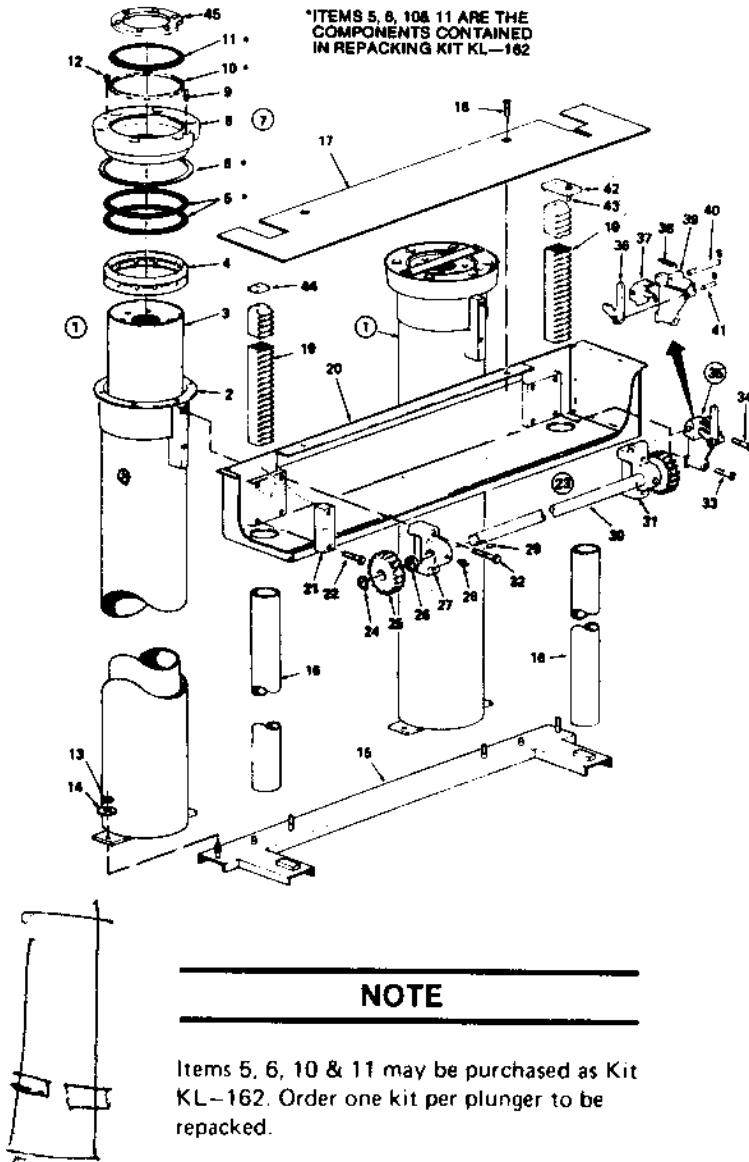
ITEM NO.	PART NO.	QTY	DESCRIPTION	ITEM NO.	PART NO.	QTY	DESCRIPTION
1	AS-24910	1	L.H. Superstructure	13	M-2139	1	— Adapter High Pad
2	AS-24906	1	R.H. Superstructure	14.	M-2138	1	— Adapter Low Pad
3	1083056	2	— Bolster	15.	S-19977	2	— Clevis Pin
4	S-18577	1	— Name Plate (on item 2 only)		S-19326	2	— Roll Pin 1/8 x 5/8
	S-4515	4	— Drive Screw No.2 x 3/16	16.	S-22952	12	Roll Pin 3/8 x 1-1/2
5	S-24295	2	— Capscrew 7/8-9 x 3-3/4	17	S-24641	12	Capscrew 3/4-10x3-1/2
	S-24296	2	— Lockwasher 7/8		S-3010	12	Lockwasher 3/4
6	S-24155	2	— Tube		S-24297	2	12 pt Capscrew 1/2-13 x 1-3/4
7	S-24182	2	— Arm		S-512	2	Lockwasher 1/2
8	S-24159	4	— Bearing Washer	19.	1083193	2	Drive Rivet
9	S-24968	*	— Bearing Shim	20.	S-23343	1	Wheel Chock
10	1081052	1	— A.L.I. Plate (on item 1 only)	21.	S-16956	1	Adapter Adjusting Handle
11	AS-23377	4	Adapter & Sleeve				
12	AS-23375	1	— Sleeve Ass'y				

* AS REQUIRED

Tube & Plunger

ITEM NO.	PART NO.	QTY	DESCRIPTION
1.	1080671	2	Tube and Plunger
2.	1080670	1	- Tube
3.	KL-176	1	- Plunger - Incl's item 8
4.	A-1325	1	- Packing Follower
5.	S-5857	2	- Packing - See Note 1
6.	S-5858	1	- Gasket - See Note 1
7.	AS-26255	1	- Packing Gland Assembly
8.	M-2100	1	- Packing Gland
9.	S-5096	1	- Grease Fitting
10.	S-18868	1	- Wiper Packing - See Note 1
11.	S-18867	1	- Wiper Ring - See Note 1
12.	S-25646	1	- Relief Fitting
13.	S-508	4	Hex Nut 1/2
14.	S-20147	4	Washer 1/2
15.	1080267	1	Channel
16.	1080157	2	Guide Tube
17.	1080164	1	Trench Cover Door
18.	S-722	2	Capscrew 1/2 x 1
19.	1080236	2	Rack
20.	1080747	1	Trench Box
21.	S-24207	2	Block - See Note 2
22.	S-2407	2	Capscrew 1/2-13 x 2
23.	1080263	1	Bearing Assembly
24.	S-18912	2	- Retaining Ring
25.	S-24522	2	- Gear
26.	S-23515	2	- Spacer
27.	1080220	1	- Pillow Block L.H.
28.	S-5096	2	- Grease Fitting
29.	S-18911	2	- Key
30.	S-24187	1	- Shaft
31.	1080222	1	- Pillow Block R.H.
32.	S-19185	4	Capscrew 1/2-13 x 5-1/2
33.	1080271	1	12pt. Capscrew 1/2-13 x 3
34.	1080304	1	12pt. Capscrew 1/2-13 x 5
35.	1080168	1	Lift Locking Assembly
36.	1080212	1	- Lever Arm
37.	1080214	1	- Locking Dog
38.	1080179	1	- Spring
39.	1080210	1	- Bracket
40.	1080177	1	- Pin
	1082136	2	- Retaining Ring
41.	1082135	2	- Retaining Ring
	1080172	1	- Pin
42.	1080226	1	Arm Trip Pin
43.	S-21825	2	Hex Nut 5/16-24
	1080227	1	Trip Pin
44.	1080225	1	Spacer Block
45.	1082649	2	Spacer Ring (Alignment Lifts Only)

*ITEMS 5, 6, 10 & 11 ARE THE COMPONENTS CONTAINED IN REPACKING KIT KL-162



NOTE

Items 5, 6, 10 & 11 may be purchased as Kit KL-162. Order one kit per plunger to be repacked.

WARRANTY

All automotive lifts produced by this company are warranted for one year from date of sale to original user against defective material and/or workmanship, when the product is installed and/or used in accordance with our specifications. Our obligation assumed under this warranty is limited to repairing or replacing any part or parts returned to us at our factory transportation prepaid, which prove to our satisfaction upon inspection, to have been defective and which have not been misused or carelessly handled. We reserve the right to decline responsibility when repairs have been made or attempted by others without our written authorization. Damage or failure of any part due to electrolysis, corrosion or faulty maintenance is not covered by this warranty. Electric motors, starters and related electrical equipment are covered by the manufacturer of the particular item involved.

This writing contains the entire agreement between the Company and the purchaser. There are no warranties, express or implied, of merchantability, fitness for a particular purpose or otherwise which extend beyond the description of the face hereof.

WEAVER®

Subsidiary of Walter Kidde & Company, Inc.

KIDDE

Form 1691-3/81 5MBD
PART NO. 1085006

PRINTED IN USA

© DURA CORP 1978