

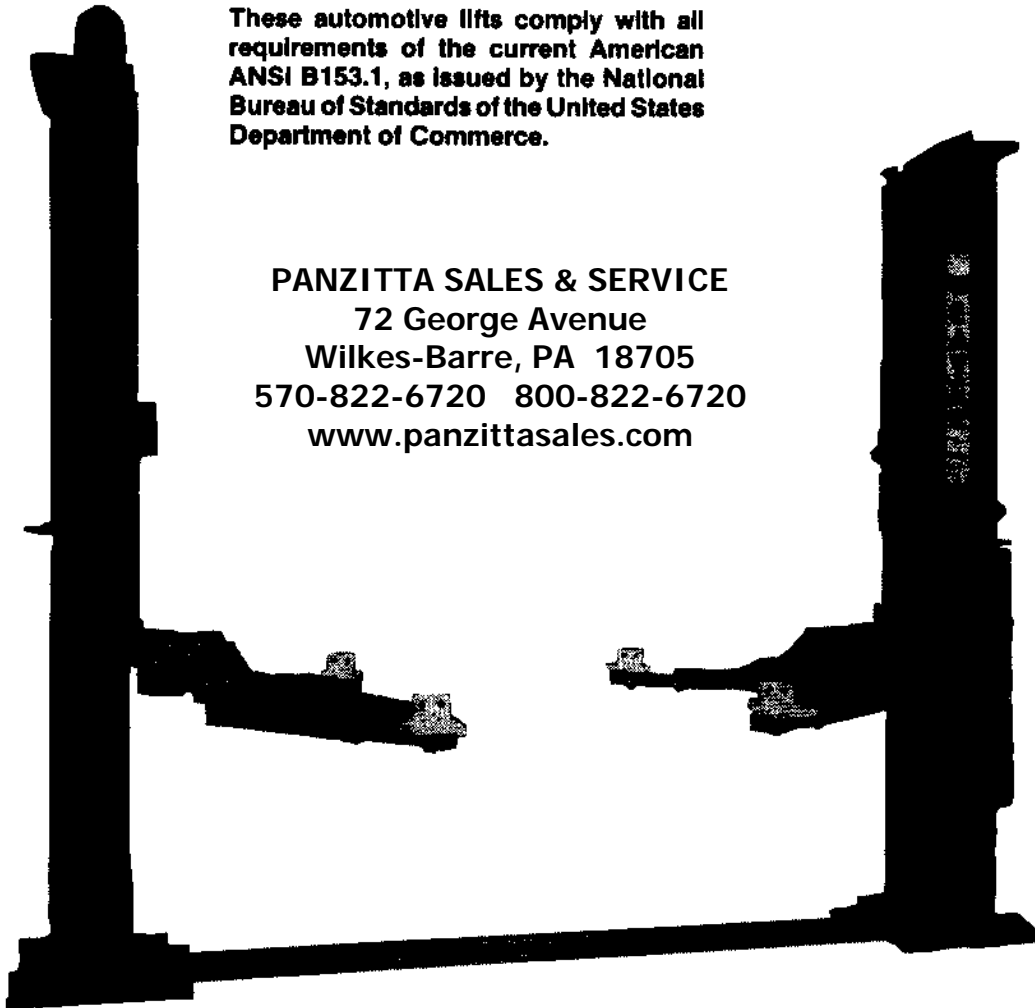
Installation, operation and service manual



for the AFH-72 Workhorse

These automotive lifts comply with all requirements of the current American ANSI B153.1, as issued by the National Bureau of Standards of the United States Department of Commerce.

PANZITTA SALES & SERVICE
72 George Avenue
Wilkes-Barre, PA 18705
570-822-6720 800-822-6720
www.panzittasales.com



MODEL	CAPACITY	
AFH-72	7000 lbs.	3,175 KG

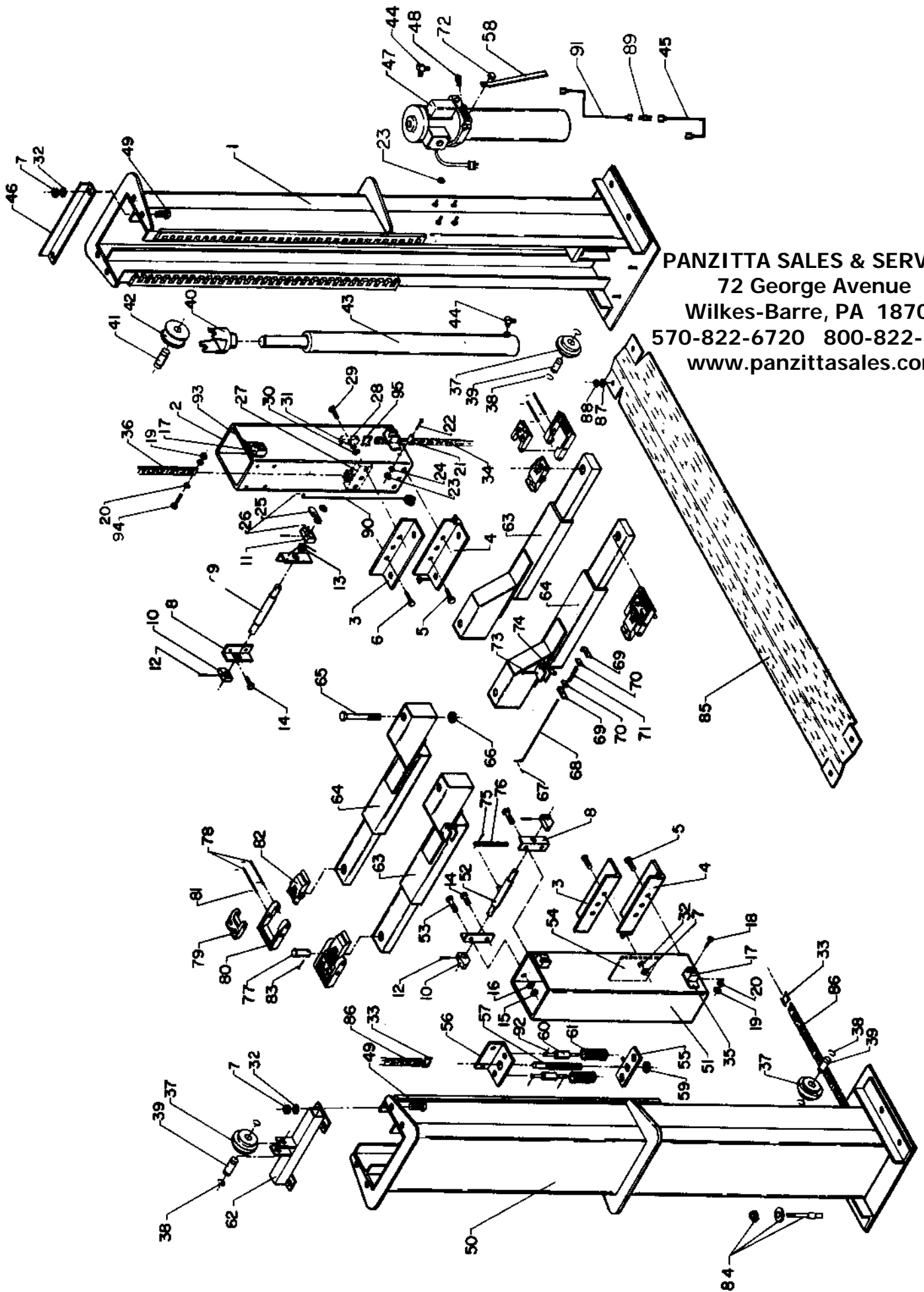
MODEL NO. _____

INSTALLER _____

SERIAL NO. _____

DATE INSTALLED _____

WARNING
Do not start installation before studying this booklet to become familiar with installation procedure. Acquaint yourself with model type to avoid improper installation.



PANZITTA SALES & SERVICE
 72 George Avenue
 Wilkes-Barre, PA 18705
 570-822-6720 800-822-6720
 www.panzittasales.com

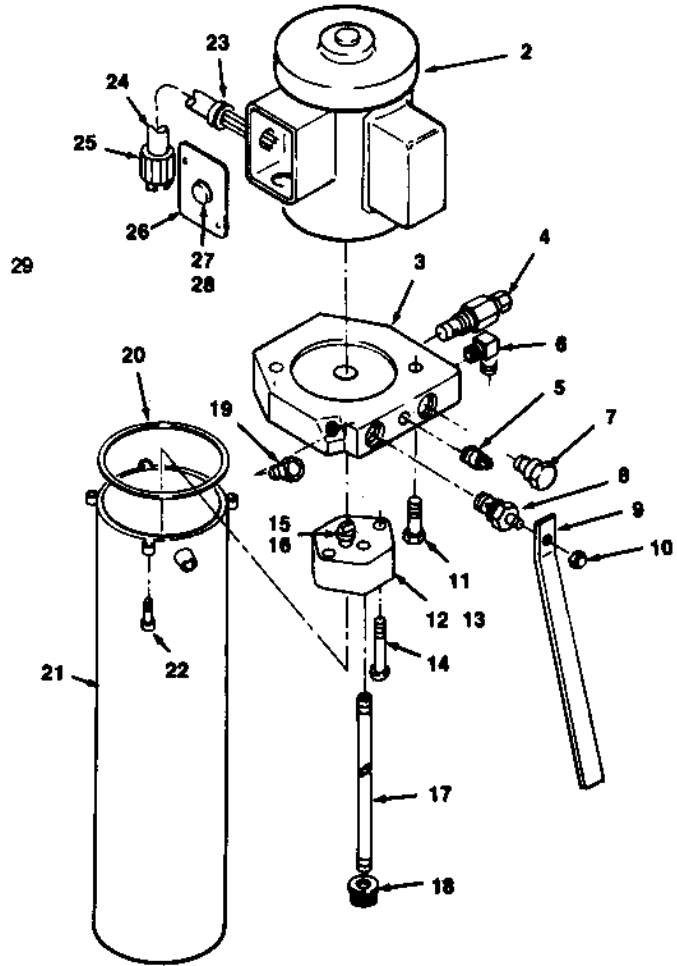
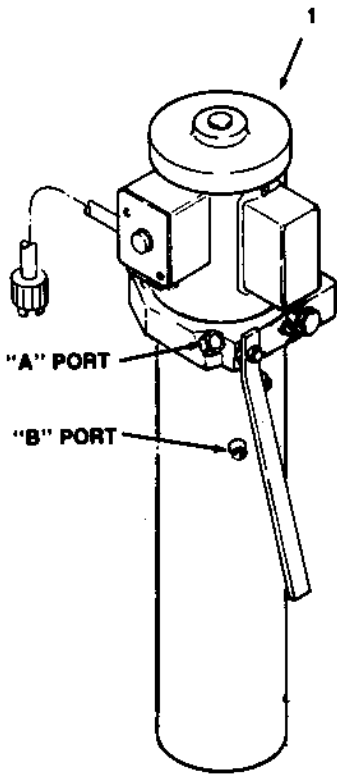
ITEM NO.	QTY.	PART NO.	DESCRIPTION	ITEM NO.	QTY.	PART NO.	DESCRIPTION
1	1	1087157	Mast W.A. Prw. Side	47	1	1086802	Power Unit Standard Model
2	1	1087155	Carriage Tube Pwr. Side	48	1	1086730	Breather
3	2	1087137	Arm Bracket	49	6	S-16329	Bolt 5/8-11 x 2-1/2
4	2	1087151	Arm Bracket W.A.	50	1	1087158	Mast W.A. Slave Side
5	9	1087099	Bolt 5/8 - 11 x 2 GD. 8	51	1	1087156	Carriage Tube Slave
6	3	1087100	Bolt 5/8 - 11 x 2 1/2 GD. 8	52	1	1087149	Lock Rod W.A.
7	18	1087126	Locknut 5/8 - 11	53	2	1087106	Bolt 7/16-14 x 2 GD. 8
8	4	1087091	Lock Rod Support	54	1	1087119	Reinforcement Plate
9	1	1087096	Lock Rod	55	1	1087148	Spring Plate W.A.
10	3	1087095	Lock Dog	56	1	1087090	Lock Angle
11	1	1087150	Control Dog W.A.	57	1	1087125	Equalizing Chain Adjuster
12	4	S-15035	Roll Pin 3/16 x 1	58	1	1086906	Lever
13	1	1087101	Torsion Spring	59	1	1087107	Locknut 1-8
14	6	1087102	Bolt 7/16-14 x 1-1/2 GD.8	60	2	1087222	Spring Guide
15	8	G9413966	Locknut 7/16-14	61	2	1087105	Compression Spring
16	8	S-12963	Washer 7/16	62	1	1087154	Wheel Carrier Ass'y
17	8	1087180	Bearing Drill Ass'y - <i>1087634</i>	63	2	1087173	Arm Ass'y Left Side
18	18	1087103	Bolt 3/8-16 x 3 GD.8 <i>DH-7610-01</i>	64	2	1087172	Arm Ass'y Right Side
19	18	S-12455	Locknut 3/8-16	65	4	1087108	Bolt 3/4-10 x 8 GD. 8
20	20	S-12650	Washer 3/8	66	4	S-17729	Locknut 3/4-10
21	2	1087129	Mast Stop	67	4	S-14760	Roll Pin
22	2	S-3629	Bolt 5/16-18 X 1 3/4	68	4	1085981	Lock Rod
23	6	S-16330	Locknut 5/16-18	69	8	1085990	Squeeze Plate W.A.
24	2	S-19957	Washer 5/16	70	8	1085980	Lock Plate
25	1	1087143	Release Pivot	71	4	1085989	Compression Spring
26	2	S-3627	Cotter Pin	72	1	S-15253	Acorn Hex Head Nut
27	1	1087093	Chain Anchor Power	73	8	1085991	Machine Screw 10-24X
28	1	1087136	Chain Anchor Slave	74	8	1085992	Locknut 10-24
29	1	1087104	Bolt 1/2-13 X 1-3/4 GD. 8	75	2	S-275	Cotter Pin
30	1	1086696	Locknut 1/2-13	76	1	1087176	Link
31	1	S-18432	Washer 1/2	77	4	1086325	Adapter Swivel Pin
32	15	S-21137	Washer 5/8	78	8	1087057	Adapter Pin
33	3	1087117	Master Link W/Side PL & Cotter	79	4	M-2138	Machine Adapter Pad Low
34	1	1087115	Rollerless Chain 31-1/4"	80	4	M-2139	Machine Adapter Pad High
35	8	1087145	Support Plate	81	16	S-19326	Roll Pin
36	1	1087114	BL-866 Leaf Chain 115"	82	4	M-2140	Machine Adapter Base
37	3	1087122	Lift Wheel Ass'y	83	4	S-25511	Roll Pin
38	6	1086092	Retaining Ring	84	10	1086130	Ramset Bolt Ass'y
39	3	1087128	Axle	85	1	1087178	Chain Cover W.A.
40	1	1087098	Chain Wheel Mtg. Brkt	86	1	1087116	Rollerless Chain 293 3/4"
41	1	1087131	Roller Stud	87	4	S-951	Washer
42	1	1087124	Lift Wheel Ass'y	88	4	S-595	Nut 3/8-16
43	1	1087163	Hydraulic Cylinder	89	1	1086098	Coupling
44	2	1086138	Elbow	90	1	1087179	Release Handle
45	1	1087168	Hydraulic Line to Cylinder	91	1	1087169	Hydraulic Line to Power Unit
46	1	1087138	Carriage Stop	92	4	S-107	Cotter Pin
				93	1	1087227	Spacer
				94	1	1087103	Bolt 3/8" x 16 x 3" Grade 8
				95	1	1087255	Connecting Pin

Handwritten notes:
1087634
DH-7610-01
1087634
28

PANZITTA SALES & SERVICE
 72 George Avenue
 Wilkes-Barre, PA 18705
 570-822-6720 800-822-6720
 www.panzittasales.com

AFH-72 WORKHORSE LIFT PUMP/MOTOR

PANZITTA SALES & SERVICE
72 George Avenue
Wilkes-Barre, PA 18705
570-822-6720 800-822-6720
www.panzittasales.com



ITEM NO.	PART NO.	QTY.	DESCRIPTION
1	1066802	1	Motor/Pump Assembly (Includes 3-22 except 6, 9, 10, 19)
2	1066736	1	Motor (Std. —Single phase: 60 Cyc.; 220V)
3	1066722	1	Valve Body
4*	1066720	1	Relief Valve
5	S-1806	1	Pipe Plug 3/8 NPT
6	1066138	1	90° Elbow 3/8 NPT x 1/2" Line
7*	1066719	1	Check Valve
8*	1066721	1	Pump Valve
9	1066906	1	Lever
10	S-15253	1	Acron Nut 5/16-18
11	1066732	2	Allen Screw 3/8-16 x 1 1/2"
12	1067036	1	Pump Assembly (Includes Items 13, 14, 15 & 16)
13	1067037	1	Pump
14	1067039	2	Hex Capscrew 5/16-25 x 2-1/2"
15	1067038	1	Drive Coupling
16	1066805	1	Motor Assembly (Includes 2, 23-28)

ITEM NO.	PART NO.	QTY.	DESCRIPTION
17	1066728	1	Suction Line
18	1066740	1	Filter
19	1066730	1	Breather
20	1066343	1	'O' Ring Seal
21	1065601	1	Reservoir
22	S-17574	4	Allenhead Capscrew 1/4" - 20 x 1"
23	1066738	1	Bushing (Heyco)
24	1066731	1	Power Cable
25	1066741	1	Plug-Male
26	1066340	1	Cover
27	1066733	1	Switch, Pin Plunger
28	1066734	1	Actuator (Button)
29	1066125	1	Plug-Female

*KL-278 INCLUDES ALL 3 VALUES

The oil to use in the power unit should be an anti-wear hydraulic oil which meets the following specifications:

Gravity.....	24 to 30
Flash.....	365 to 440
Viscosity @ 100° F.....	295 to 320
Viscosity @ 210° F.....	46 to 56
Pour.....	-10 to -25