

ROTARY LIFT

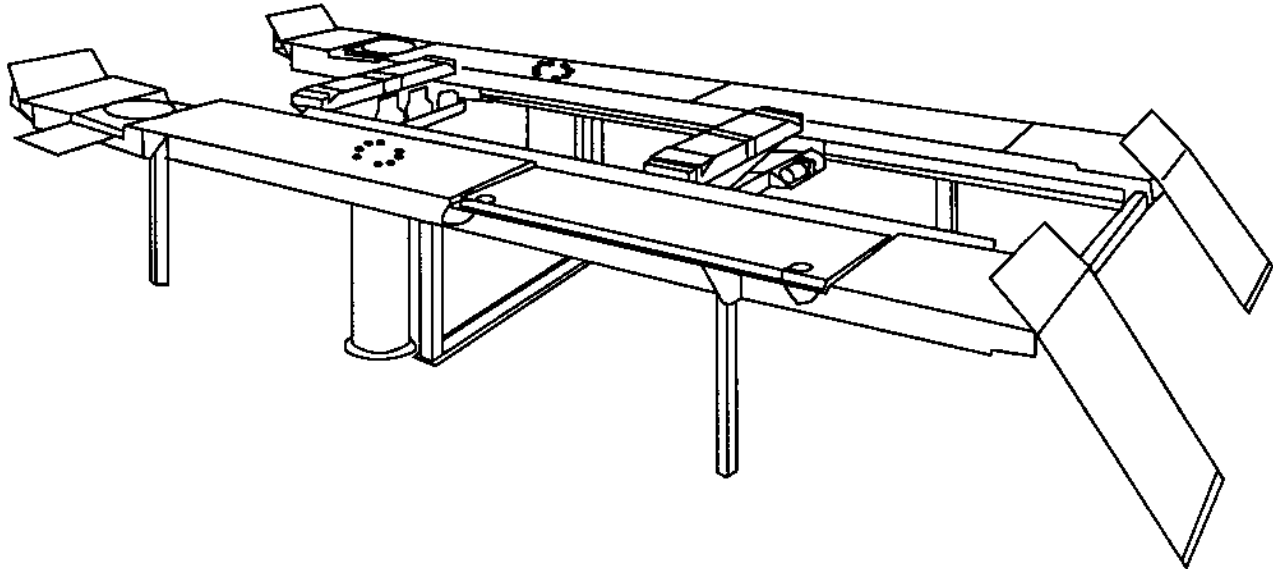
P.O. Box 30206, Memphis, TN 38130

WORLD LEADER IN LIFT SYSTEMS

A **DOVER** INDUSTRIES COMPANY

MODEL AR28H PARTS BREAKDOWN

PANZITTA SALES & SERVICE
72 George Avenue
Wilkes-Barre, PA 18705
570-822-6720 800-822-6720
www.panzittasales.com



NOTES:

1. Equalizer frame roller assemblies were replaced with slider blocks on 2-16-88.
2. Original lift design required JG166 babbit bearing jacks. On September 2, 1988 beginning with jack serial number 338707, factory order number L58987, the jack design was changed to a replaceable plastic bearing style.

IMPORTANT: When ordering parts or requesting service, always give exact model and jack serial number. Model number is shown on nameplate attached to superstructure. Jack serial number is located on side of plunger at point of attachment to superstructure.

OWNERS RECORD

Complete Information
at right and keep in
a safe place.

Date Installed _____

Installed In Bay # _____

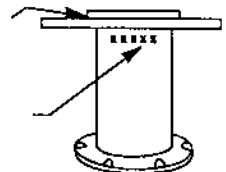
Serial # _____ JG189

Serial # _____ JG189

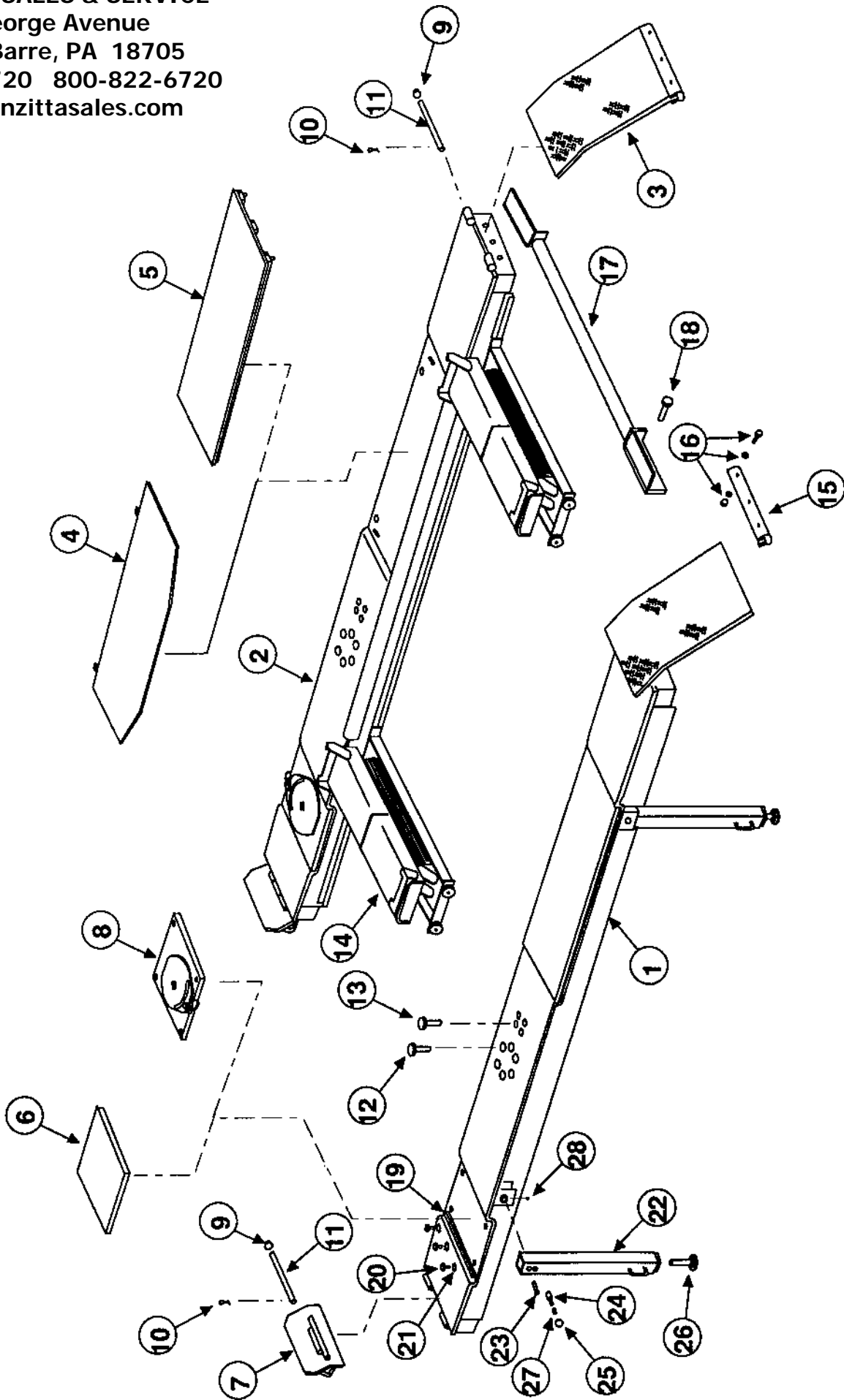
Factory Order # L

Lift Model No.
Stamped On
Superstructure
Nameplate

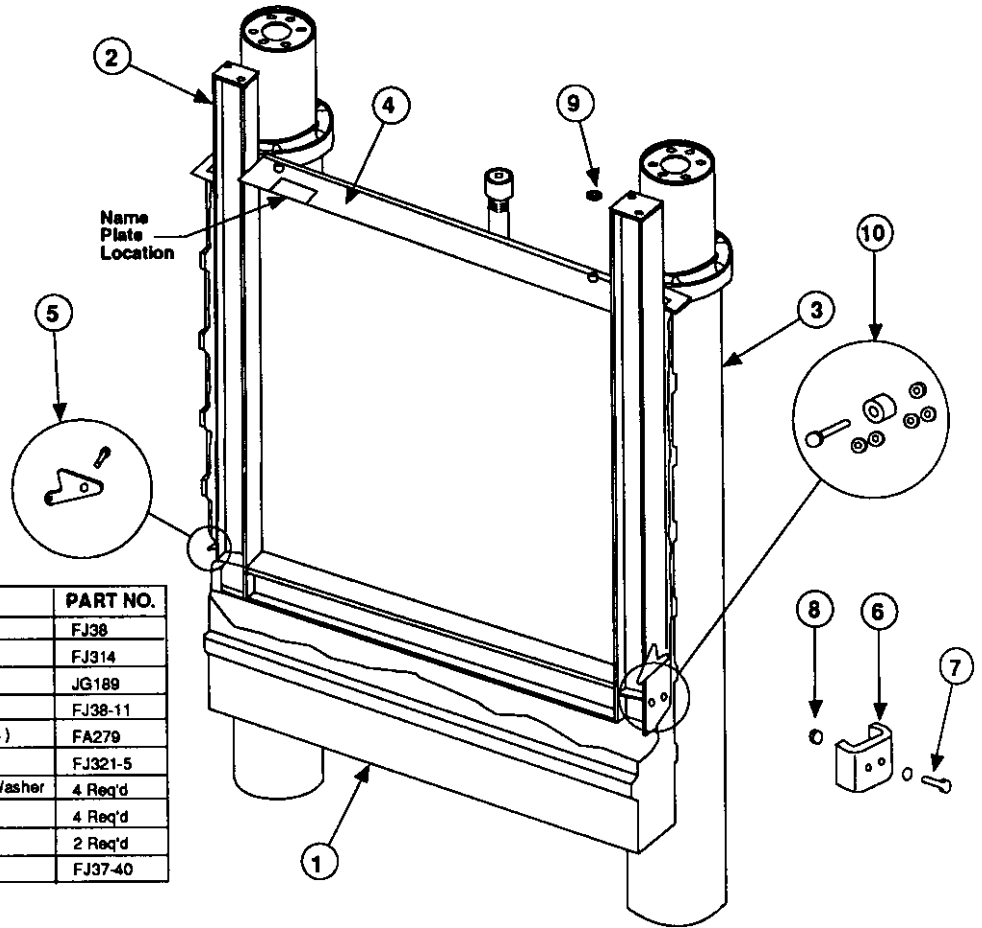
Jack Serial No.
Stamped On
Plunger.



PANZITTA SALES & SERVICE
72 George Avenue
Wilkes-Barre, PA 18705
570-822-6720 800-822-6720
www.panzittasales.com



PANZITTA SALES & SERVICE
 72 George Avenue
 Wilkes-Barre, PA 18705
 570-822-6720 800-822-6720
 www.panzittasales.com



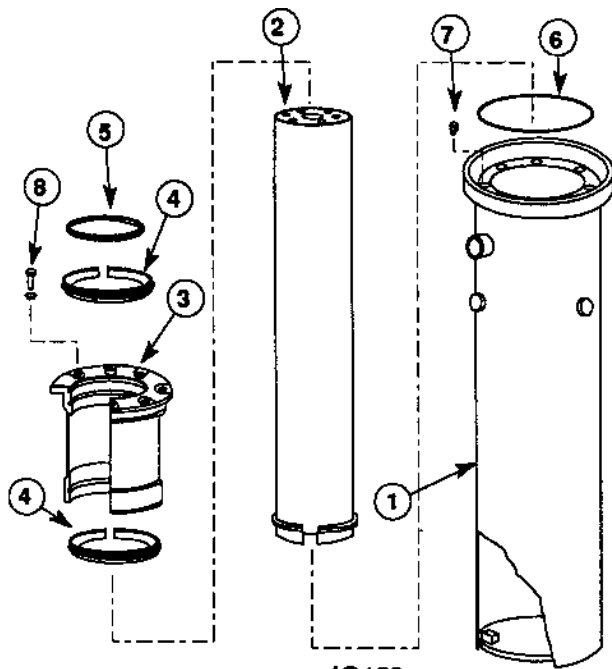
ITEM NO.	DESCRIPTION	PART NO.
1	Equalizer Housing	FJ38
2	Equalizer Frame	FJ314
3	Jack Assembly **	JG189
4	Center Cover	FJ38-11
5	Replacement Latch Kit (Includes 2 Latches)	FA279
6	Slider Block*	FJ321-5
7	5/16"-18NC x 1" Lg. HHCS, & 5/16" Plain Washer	4 Req'd
8	5/16"-18NC Hex Nut	4 Req'd
9	1/4"-20NC Hex Nut	2 Req'd
10	Roller Assembly	FJ37-40

* See note 1 on front page.

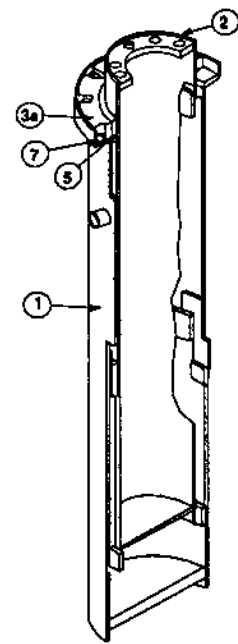
** See note 2 on front page.

SUPERSTRUCTURE REPLACEMENT PARTS

ITEM NO.	DESCRIPTION	PART NO.	ITEM NO.	DESCRIPTION	PART NO.
1	L.H. Runway	FC149	15	Ramp Chock Slide	FC134-33
2	R.H. Runway	FC134	16	#10 PNDDMS x 3/4" Lg., Plain Washer And Nut	6 Ea. Req'd
3	Ramp Chock	FC134-12	17	Spacer Bar	FC134-15
4	4 WS Slip Plate	FC5249	18	1/2"-13NC x 1 1/4" HHCS	4 REQ'D
5	Rear Filler Plate	FC5103-1	19	Turntable Guide	FC134-57
6	Front Filler Plate	FC5102	20	1/4"-20NC HHCS x 3/4" Lg.	6 REQ'D
7	Wheel Stop	FC134-13	21	1/4" Ext. Tooth Lock Washer	6 REQ'D
8	Turning Radius Gauge	FC5105	22	Leg Assembly	FC134-28
9	5/8" Push Nut	4 REQ'D	23	Pin	FC134-9-8
10	5/32" Cotter Pin	4 REQ'D	24	Locking Pin	FC134-23
11	Hinge Pin	FC134-13-4	25	Ball Handle	FC134-9-10
12	7/8"-9NC x 6" Lg. SOCHDCS	12 REQ'D	26	Adj. Screw Assembly	FC134-36
13	1/2"-12NC x 6" HHCS	4 REQ'D	27	Compression Spring	FC134-9-7
14	Rolling Bridge	FC5279	28	5/16"-18NC Set Screw x 5/16" Lg.	FC134-9-13



**JG189
(PLASTIC BEARING JACK
CURRENT STYLE)**

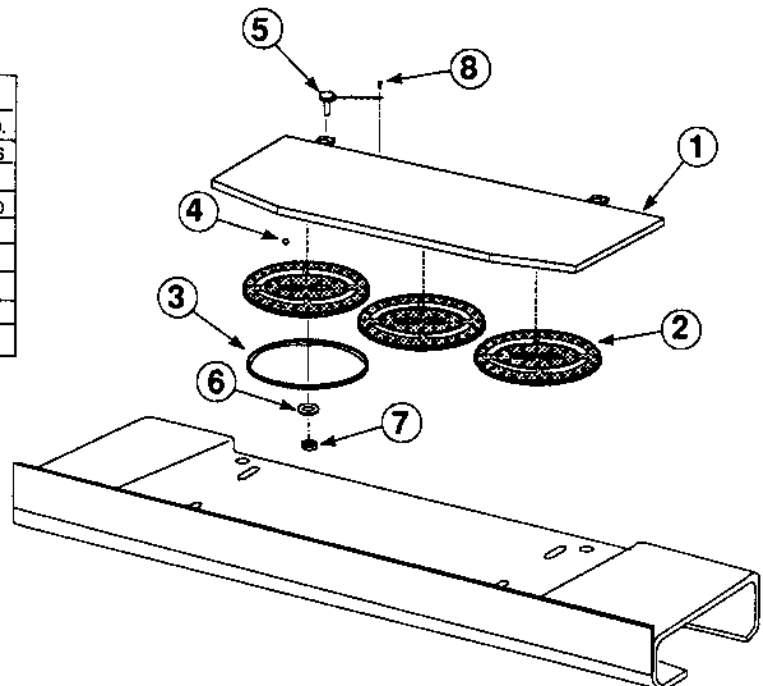


**JG166
(BABBIT BEARING JACK
OBSOLETE)**

JACK PARTS			
ITEM NO.	DESCRIPTION	JG189 PART NO.**	JG166 PART NO.**
1	Casing Assembly	JG767	JG746
2	Plunger Assembly	JG446	JG438
3	Guide Assembly	JG513	N/A
3a	Packing Gland	N/A	JG620
4	Jack Bearing	JG766-6	N/A
5	Seal	JG227	JG220
6	"O" Ring	JG37	N/A
7	Bleeder Screw	JX207	JX207
8	1/2"-13NC HHCS GD 8 x 1 14" Lg. & Ext Tooth LW	8 Req'd	6 Req'd

** See Note 2 On Front Page.

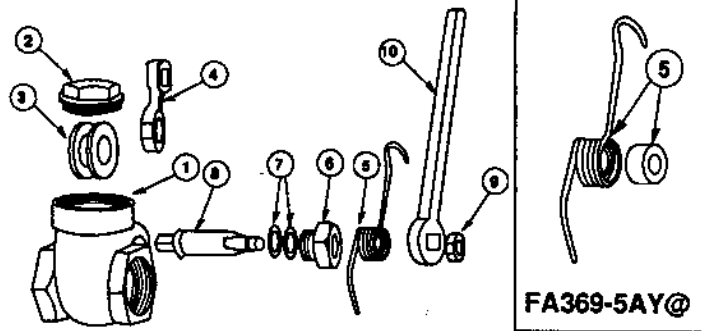
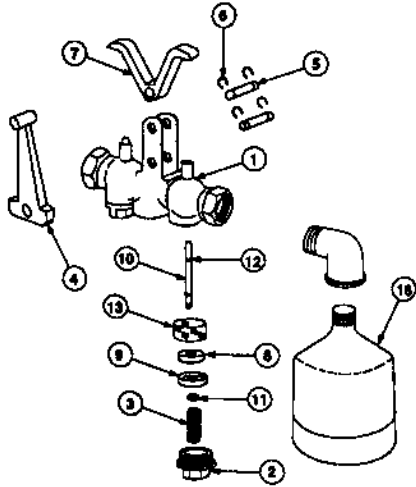
4 WS SLIP PLATE PARTS		
ITEM NO.	DESCRIPTION	PART NO.
1	Slip Plate Weldment	FC5190-16
2	Retainer	FC5190-6
3	Felt Wiper	FC5190-20
4	Slip Plate Roller	FC5190-7
5	Lock Pin Assembly	FC5104-4
6	7/16" SAE Washer	6 Req'd
7	3/8"-16NC Jam Nut	6 Req'd
8	1/4"-2NC PNHMS CD PLT X 3/8" Lg.	4 Req'd



PANZITTA SALES & SERVICE
 72 George Avenue
 Wilkes-Barre, PA 18705
 570-822-6720 800-822-6720
 www.panzittasales.com

FA377 LOCKING AIR VALVE		
ITEM NO.	DESCRIPTION	PART NO.
1	Body@	N/A
2	Cap	FA376-2
3	Spring	FA376-3
4	Locking Lever	FA377-1
5	Pin	FA376-5
6	Snap Ring	FA376-6
7	Rocker Arm	FA376-7
8	Disc	FA376-8
9	Disc Cage	FA376-9
10	Stem	FA376-10
11	Stem Nut	FA376-11
12	"O" Ring	FA376-12
13	Screen	FA376-13
15	Stem Assy. Pcs 8, 9, 10, 11 & 12	FA376-15
16	Muffler	FA515

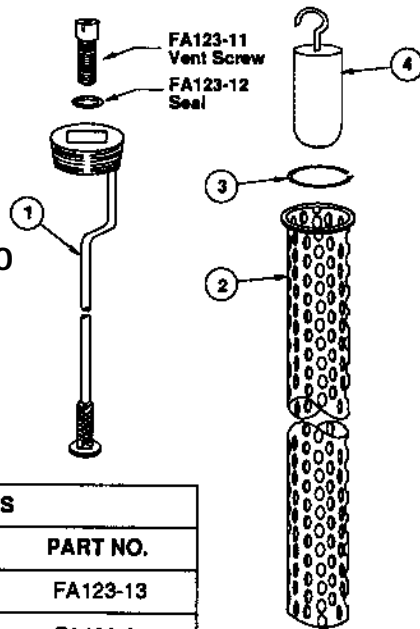
@ NOTE: Valve body is not available as a replacement part. If valve body needs replacing, order a new FA377 air valve.



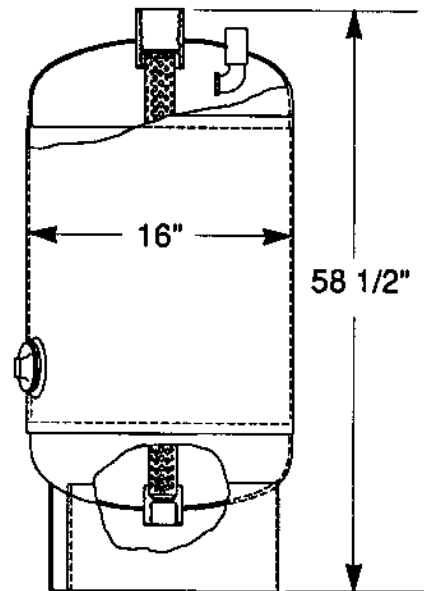
- * Valve body not available as a replacement part. If valve body needs replacing, order a new FA369 valve.
- ** Always give valve manufacturer when ordering parts. Valve manufacturer located on valve body or on lever. If valve is a MacDonald, order parts with the suffix of AY. (Example: FA369-5AY, FA360-10AY, FA369-2AY, Etc.)
- @ FA369-5AY spring also includes a nylon reducing bearing.

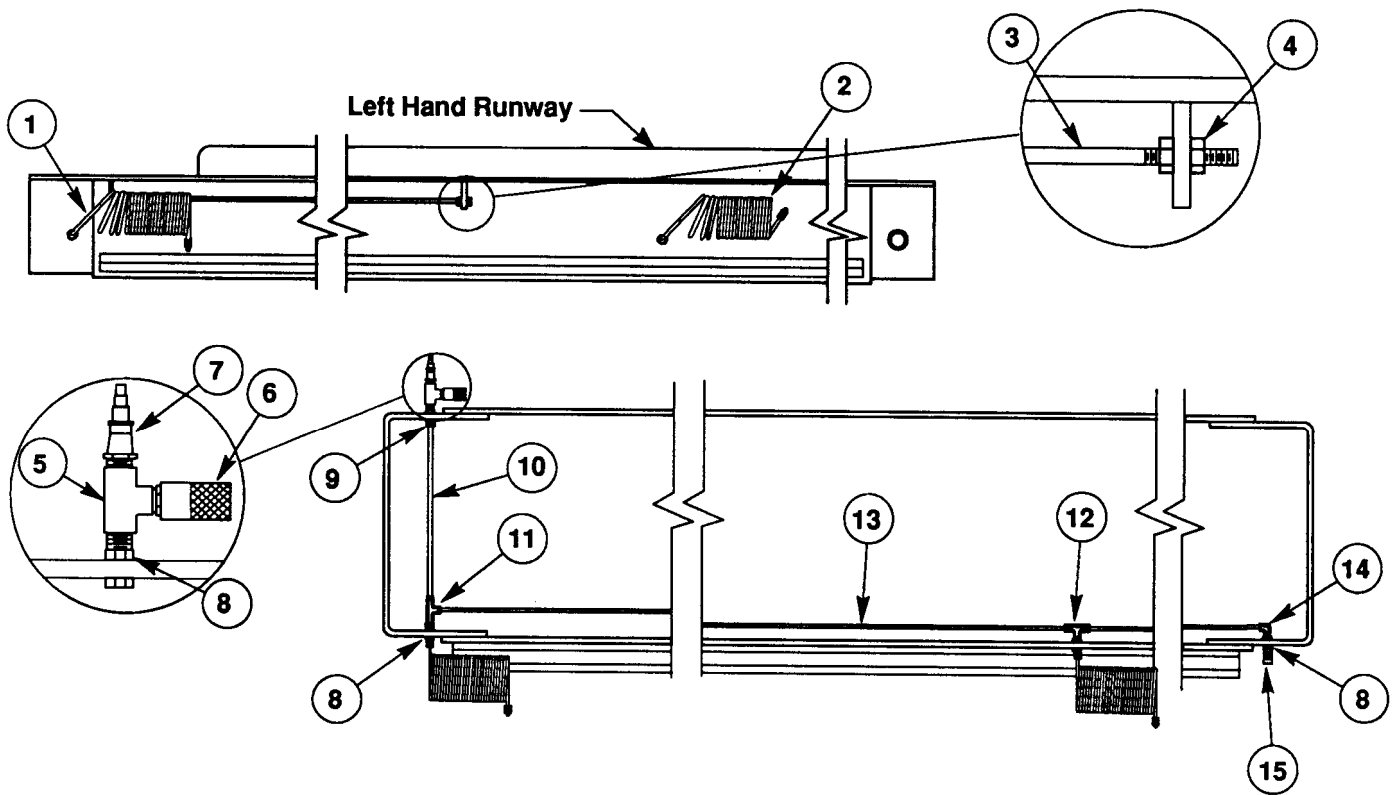
FA369 HAND OPERATED OIL VALVE PARTS		
ITEM NO.	DESCRIPTION	PART NO.**
1	Body*	N/A
2	Cap	FA369-2
3	Disc	FA369-3
4	Lever	FA369-4
5	Spring	FA369-5
6	"O" Ring Retainer	FA369-6
7	"O" Ring	FA369-7
8	Stem	FA369-8
9	Handle Nut	FA369-9
10	Lever Handle	FA369-10

PANZITTA SALES & SERVICE
 72 George Avenue
 Wilkes-Barre, PA 18705
 570-822-6720 800-822-6720
 www.panzittasales.com

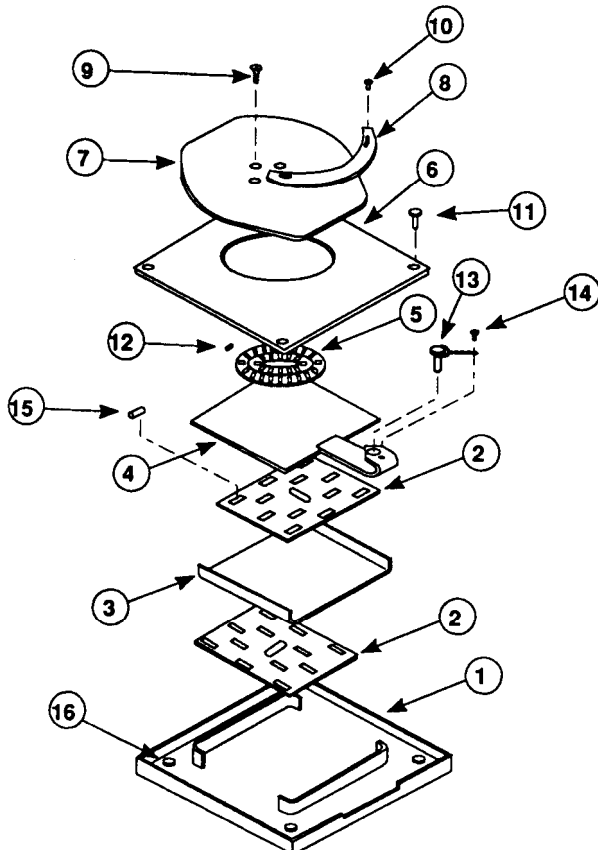


FA123 TANK PARTS		
ITEM NO.	DESCRIPTION	PART NO.
1	Plug/Gauge	FA123-13
2	Float Guide	FA123-6
3	Lock Ring	Installed At Factory
4	Low Oil Control Kit	FA123-8





INTERNAL AIRLINE PARTS					
ITEM NO.	DESCRIPTION	PART NO.	ITEM NO.	DESCRIPTION	PART NO.
1	Rear Recoil Hose	FC147-14	9	Male Connector	FC147-8
2	Front Recoil Hose	FC147-16	10	Short Runway Tubing	FC147-2
3	Retainer Rod	FC147-13	11	Male Run Tee	FC147-3
4	1/4"-20NC Hex Nut	4 REQ'D	12	Union Tee	FC148-2
5	Tee	FJ7374	13	Long Runway Tubing	FC147-4
8	Coupler	FC147-15	14	Male Elbow	FC147-7
7	Coupler Half	FC5124-1	15	Coupler	FC147-15
8	Female Bulkhead	FC147-1			



RADIUS GAUGE PARTS		
ITEM NO.	DESCRIPTION	PART NO.
1	Base Plate	FC5105-1
2	Lower Bearing Spacer	FC5105-3
3	Intermediate Pan	FC5105-4
4	Handle Plate Assembly	FC5105-5
5	Upper Bearing Retainer	FC5105-7
6	Base Top Plate	FC5105-8
7	Turntable Top Plate	FC5105-9
8	Name Plate	NP228
9	1/4"-20NC Ft. C'Sunk HD Mach. Screw 1/2" Lg.	8 REQ'D
10	#10-24NC PNHMS CD Plate x 1" Lg.	4 REQ'D
11	5/16"-18NC HHCS CD Plate x 1/4" Lg.	8 REQ'D
12	Short Turntable Roller	FC5105-6
13	Lock Pin Assembly	FC5104-4
14	1/4"-20NC PNHMS CD Plate x 3/8" Lg.	2 REQ'D
15	Long Turntable Roller	FC5105-2
16	5/16"-Weld Nut W/Lock Grip Nut #LC5168	4 REQ'D

PANZITTA SALES & SERVICE
 72 George Avenue
 Wilkes-Barre, PA 18705
 570-822-6720 800-822-6720