

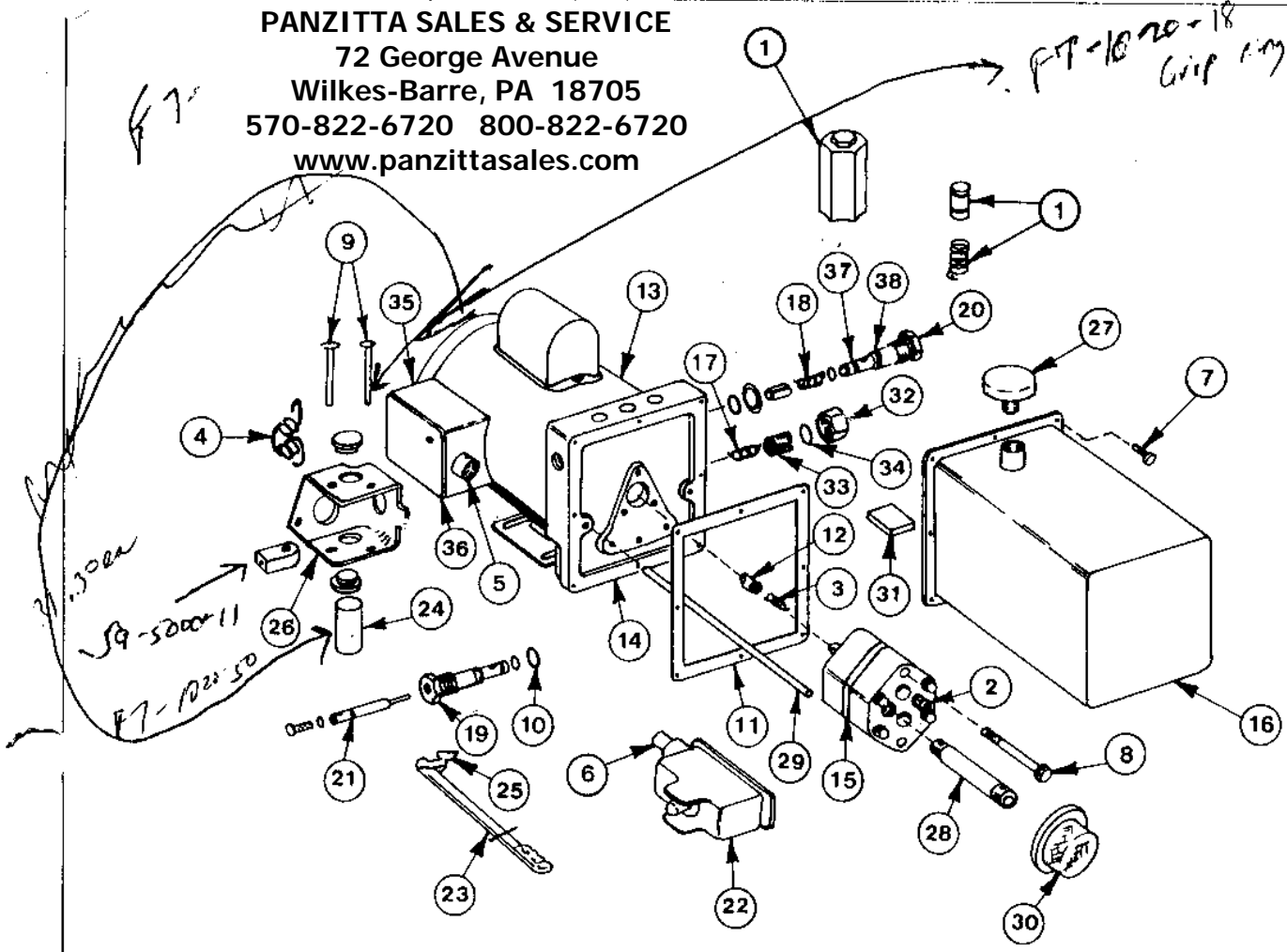
# ROTARY LIFT

P.O. Box 30205, Memphis, TN 38130  
 WORLD LEADER IN LIFT SYSTEMS

A **DOVER** INDUSTRIES COMPANY

# MODEL P461 PARTS BREAKDOWN

**PANZITTA SALES & SERVICE**  
 72 George Avenue  
 Wilkes-Barre, PA 18705  
 570-822-6720 800-822-6720  
 www.panzittasales.com



### P461 PARTS LIST

ITEM NO.	DESCRIPTION	PART NO.	ITEM NO.	DESCRIPTION	PART NO.
1	Strainer Filter Assembly	A1-300-01	20	Check Cap Assembly	S3-1001-00
2	Load Delay Valve 1.5gpn	A3-2001-05	21	Release Stem Assembly	S4-1100-00
3	Spring	C1-1033-00	22	Switch Box Assembly	S6-3003-01
4	Torsion Spring	C2-1003-02	23	Man. Rel. Valve Handle Assembly	S9-1001-11
5	Set Screw	E5-4000-05	24	Cam Shaft Assembly	S9-5000-14
6	1/2" EMT Thin Wd. Conduit	E6-1004-02	25	Rel. Valve Cam Assembly	S9-5001-11
7	12"-24 x 37" HHS	F1-1010-37	26	Act. Mtg. Brkt. Assembly	S9-6000-03
8	5/16"-24 x 2.5" HS	F1-1022-50	27	Filler Breather Cap	T3-1002-00
9	Headed Pin	F6-0181-87	28	3/8" x 21" Pipe Nipple	T1-1006-22
10	'O' Ring	G1-1000-19	29	3/8" x 24.5" Lg. Return Tube	T2-1006-93
11	Reservoir Gasket	G3-3002-00	30	Filter	T3-1008-00
12	Coupling	J3-1001-14	31	Magnet	T4-1002-00
13	Motor (E77Q4862M)	M8-5899-18	32	Relief Cap	W3-1002-10
14	End Head	N6-0004-01	33	Adj. Screw (Relief)	W5-1020-95
15	Pump (51-08066921-00)	PM-00244	34	Seal Ring	W6-1006-00
16	Reservoir	R4-2313-35	35	Box	K2-1008-06
17	Spring & Ball Assembly (Relief)	S1-1002-00	36	Cover	K3-1008-03
18	Spring & Ball Assembly (Check)	S1-1009-00	37	'O' Ring	G1-1010-12
19	Release Cap Assembly	S3-1000-01	38	'O' Ring	G1-1010-14

# ROTARY LIFT

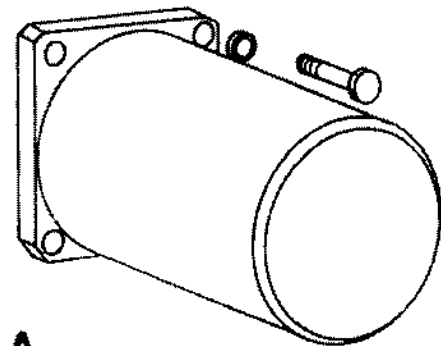
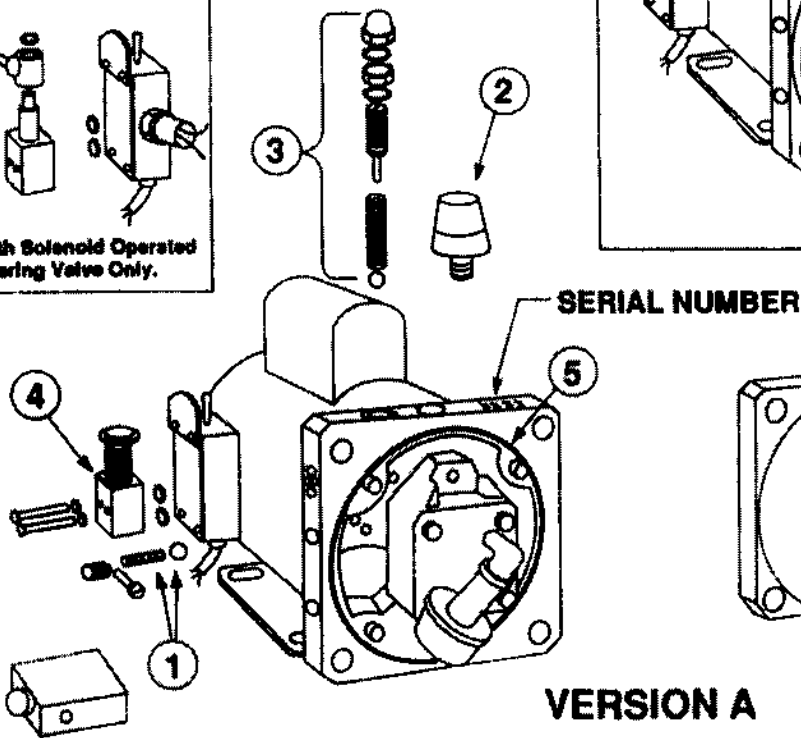
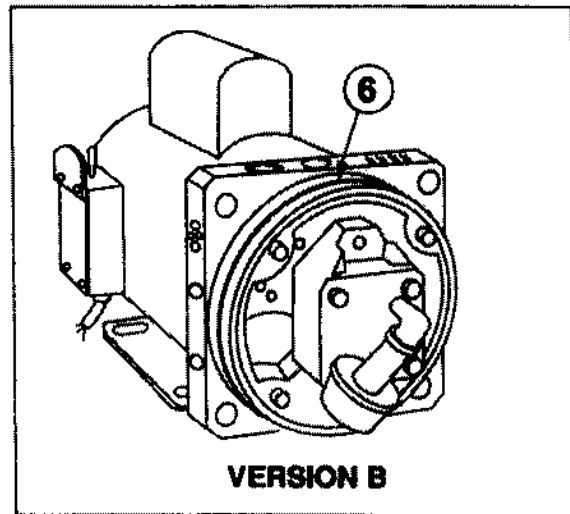
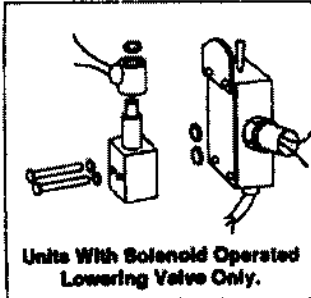
A **DOVER** INDUSTRIES COMPANY

INDEX 19.1.4

# P427 (Obsolete)

Used On: PAL5E, PAD-PAL6  
PFX-1

Manufacturer: MTE



REPLACEMENT PARTS		
ITEM NO.	DESCRIPTION	PART NO.
1	Check Ball Ass'y	P427-8
2	Filler Breather Cap	P427-4
3	By-Pass Valve Ass'y	P427-10
4	Manual Lowering Valve	P427-13
5	"O" Ring (Version A)	P427-3
6	"O" Ring Version B)	P427-17

## INSTRUCTIONS FOR CONVERTING FROM SOLENOID VALVE TO P427-13 MANUAL VALVE.

1. Disconnect power supply cord.
2. Remove lowering valve by unscrewing (2) 1 1/4" hex head screws.
3. Install manual valve using the (2) 1 1/4" hex head screws.
4. Remove cover plate of switch box.
5. Disconnect and remove coil wires to switch.
6. Replace switch cover plate.

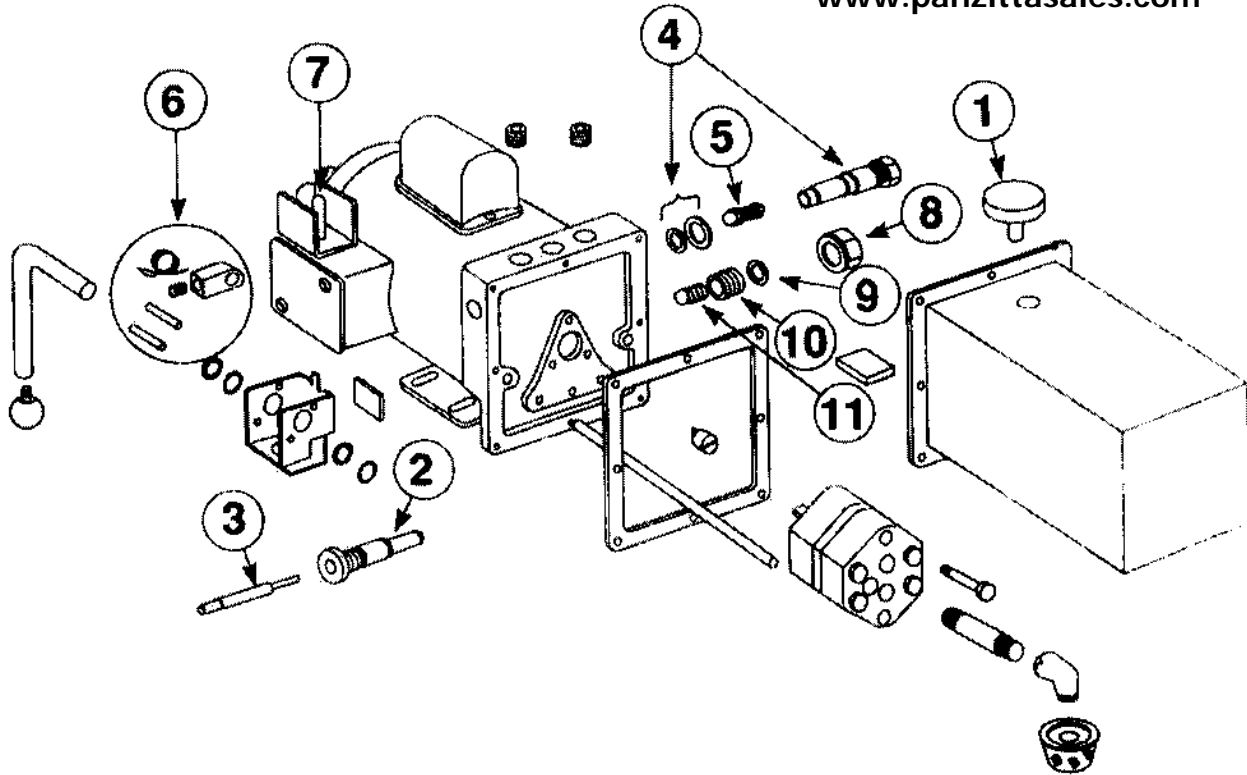
+ NOTE: Serial numbers for units shipped prior to 2/14/9 located as shown. Serial numbers for units shipped after 2/14/69 located on power unit nameplate.

NOTE: If parts other than those listed are required, it is more economical to replace the entire unit with a new P501 power unit.

# P430 (Obsolete)

Used On: PAL5E, PAD-PAL6, PFX-1  
 Manufacturer: Fenner Stone

PANZITTA SALES & SERVICE  
 72 George Avenue  
 Wilkes-Barre, PA 18705  
 570-822-6720 800-822-6720  
 www.panzittasales.com



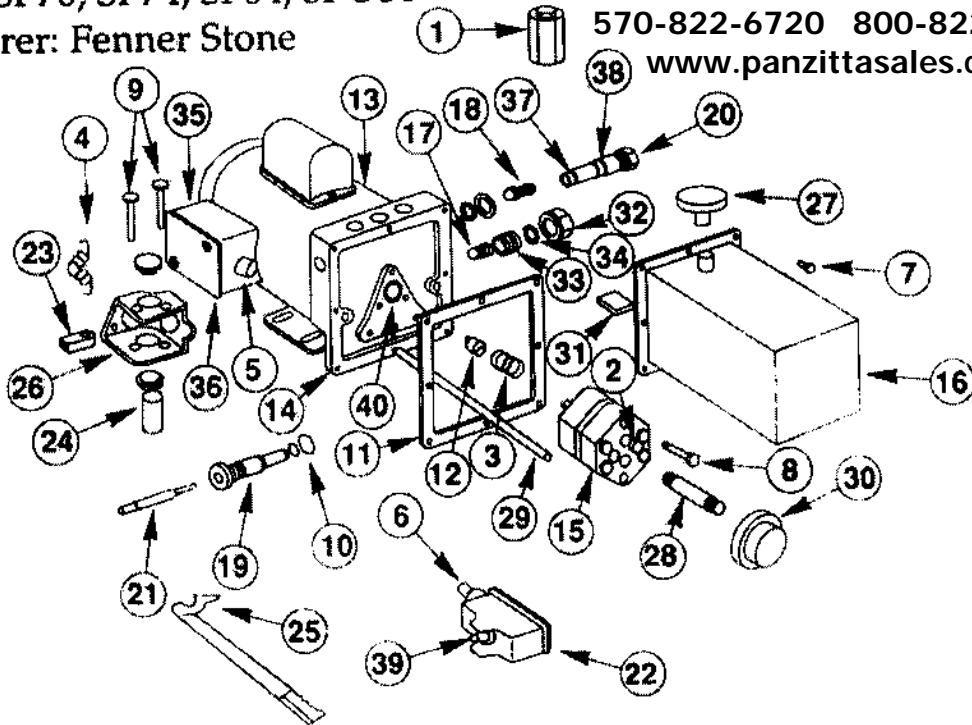
REPLACEMENT PARTS		
ITEM NO.	DESCRIPTION	PART NO.
1	Filler Breather Cap	T3-1002-00
2	Release Cap Ass'y With "O" Rings	S3-1000-01
3	Release Stem Ass'y With "O" Ring And Adj. Screw	S4-1100-00
4	Check Cap Ass'y With "O" Rings And Seal Rings	S3-1001-00
5	Spring And Ball Ass'y With Retainer	S1-1009-00
6	Lowering Valve Cam Ass'y	S9-5001-01
7	Microswitch	P423-2
8	Relief Cap	W3-1002-00
9	Seal Ring	W6-1006-00
10	Adjustment Screw (Relief)	W5-1020-95
11	Spring	C2-1003-02

**NOTE:** If parts other than those listed are required, it is more economical to replace the entire unit with a new P501 power unit.

# P461 (Obsolete)

Used On: SP70, SP74, SP84, SPO84  
 Manufacturer: Fenner Stone

PANZITTA SALES & SERVICE  
 72 George Avenue  
 Wilkes-Barre, PA 18705  
 570-822-6720 800-822-6720  
 www.panzittasales.com



## REPLACEMENT PARTS

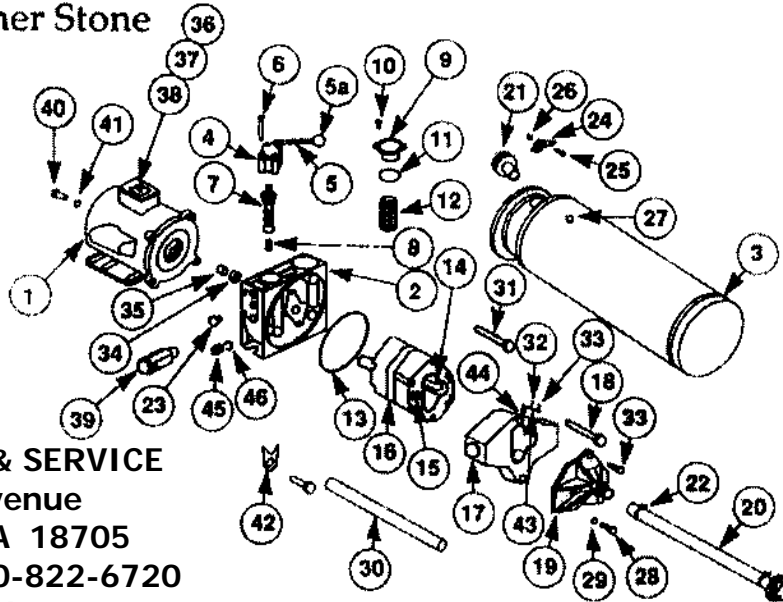
ITEM NO.	DESCRIPTION	PART NO.	ITEM NO.	DESCRIPTION	PART NO.
1	Strainer Filter Ass'y	A1-3000-00	21	Release Stem Ass'y	S4-1100-00
2	Load Delay Valve	A3-2001-05	22	Switch Box Ass'y.	S6-3003-01
3	Spring	C1-1033-00	23	Cam	S9-5000-11
4	Torsion Spring	C2-1003-02	24	Cam Shaft Ass'y	S9-5000-14
5	Set Screw	E5-4000-05	25	Rel. Valve Cam Ass'y	S9-5001-11
6	1/2" EMT Conduit	E6-1004-02	26	Act. Mt. Brkt. Ass'y	S9-6000-03
7	Screw	F1-1010-387	27	Filler Breather Cap	T3-1002-00
8	5/16"-24NC x 2 1/2"	F1-1022-50	28	3/8" x 21" Pipe Nipple	T1-1006-22
9	Headed Pin	F6-0181-87	29	3/8" x 24 1/2' Return Tube	T2-1006-93
10	"O" Ring	G1-1000-19	30	Filter	T3-1008-00
11	Reservoir Gasket	G3-3002-00	31	Magnet	T4-1002-00
12	Coupling	J3-1001-14	32	Relief Cap	W3-1002-00
13	Motor	P461-3	33	Adj. Screw (Relief)	W5-1020-95
14	End Head	N6-0004-01	34	Seal Ring	W6-1006-00
15	Pump	PM-00244	35	Box	K2-1008-06
16	Reservoir	R4-2313-35	36	Cover	K3-1008-03
17	Spring & Ball (Relief)	S1-1002-00	37	"O" Ring	G1-1010-12
18	Spring & Ball (Check)	S1-1009-00	38	"O" Ring	G1-1010-14
19	Release Cap Ass'y	S3-1000-01	39	Microswitch	P461-2
20	Check Cap Ass'y	S3-1001-00	40	Shaft Seal	G2-1001-00

**NOTE:** For complete replacement power unit, order an FA2241 power unit replacement kit.  
 (See page 14 for details.)

# P500 Series

Used On: SM And SP Series Surface Mounted Lifts

Manufacturer: Fenner Stone



**PANZITTA SALES & SERVICE**  
 72 George Avenue  
 Wilkes-Barre, PA 18705  
 570-822-6720 800-822-6720  
 www.panzittasales.com

P500 SERIES PARTS LIST

ITEM	DESCRIPTION	P500	P501	P502*	P504	ITEM	DESCRIPTION	P500	P501	P502*	P504
1	Motor	MA-S-2	1558AC	2146AC	1556AC	24	Clip	1138CA	1138CA	1138CA	1138CA
2	Pump Manifold	N-17	N-17	N-11	N-11	25	Bolt	14208A	14208A	14208A	14208A
3	Neurotube	TV23	TV23	TV24	TV24	26	Nut For Clip	1202AA	1202AA	1202AA	1202AA
4	Casing Upper/Lower	1145BC 1144BC	1145BC 1144BC	1145BC 1144BC	1145BC 1144BC	27	Vent Screw	1167AA	1167AA	1167AA	1167AA
5	Handle	1217BA	1217BA	1217BA	1217BA	28	Bolt	1124AA	1124AA	1124AA	1124AA
5a	Ball	1266AA	1266AA	1266AA	1266AA	29	Washer	1261BA	1261BA	1261BA	1261BA
6	Bolt	A-01-5	A-01-5	A-01-5	A-01-5	30	Return Tube	1344AA	TV23-12	TV24-11	TV24-11
7	Lowering Valve Assy	V-12	V-12	V-12	V-12	31	Bolt	K-09-3	K-09-3	K-09-3	K-09-3
8	Relief Valve	RV-16	RV-16	RV-16	RV-16	32	Roll Pin	1395AA	1395AA	1395AA	1395AA
9	Cap	1142BB	1142BB	1142BB	1142BB	33	Screw	1384AA	1384AA	1384AA	1384AA
10	Bolt	1153BA	1153BA	1153BA	1153BA	34	Shaft Seal	N-1-1	N-1-1	N-1-1	N-1-1
11	O' Ring	1213AA	1213AA	1213AA	1213AA	35	Coupling	MAS-1	MAS-1	MAS-1	MAS-1
12	Filter	1160BB	1160BB	1160BB	1160BB	36	Cover	WA11-9	WA11-9	WA11-9	WA11-9
13	O' Ring	1140AA	1140AA	1140AA	1140AA	37	Switch	P461-2	P461-2	P461-2	P461-2
14	O' Ring	1086AA	1086AA	1086AA	1086AA	38	Rubber Boot	1277AA	1277AA	1277AA	N/A
15	O' Ring	1912AA	1912AA	1912AA	1912AA	39	Filter Block Assy	A1-3000-00	A1-3000-00	A1-3000-00	A1-3000-00
16	Pump	PL-31-2	PL-0.8	PL-2.5	PL-2.5	40	Screw	F3-1021-50	F3-1021-30	F3-1021-30	F3-1021-50
17	Load Delay	L-03	L-03	L-09	None	41	Lockwasher	1479AA	1479AA	1479AA	1479AA
18	Bolt	1297AA	1297AA	1297AA	1297AA	42	Clamp	K-09-5	K-09-5	K-09-5	K-09-5
19	Suction Cover	2156AA	2156AA	2156AA	2156AA	43	Spring Steel	1250CA	1250CA	1250CA	1250CA
20	Suction Tube	1343AA	TV23-13 14, 15	TV24-10	TV24-10	44	Poppet	1251AA	1251AA	1251AA	1251AA
21	Filter Breather	T3-1002-08	T3-1002-08	T3-1002-08	T3-1002-08	45	Bleed Screw	2057AA	2057AA	2057AA	2057AA
22	Clip	TV20-5	TV20-5	TV20-5	TV20-5	46	Snap Ring	1104AA	1104AA	1104AA	1104AA
23	Plumbing Plug	TV-1002-00	TV-1002-00	TV-1002-00	TV-1002-00						

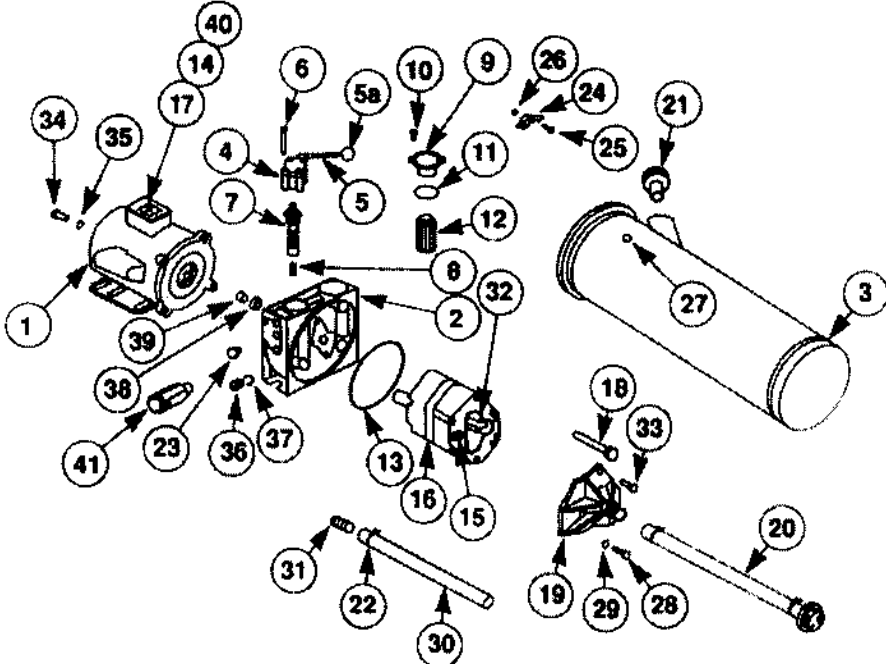
\*NOTE: For P502 power units serial numbers 12044 and above. See P502 parts breakdown. (Page 7)

NOTE: Part numbers listed are for parts painted Rotary blue. If other color is required, please specify when ordering.

NOTE: Some P500 units were manufactured by John S. Barnes. For John S. Barnes parts see P518, pg. 11.

# P502

Used On: SM And SP Series Surface Mounted Lifts  
 Manufacturer: Fenner Stone



P02 REPLACEMENT PARTS LIST					
ITEM	DESCRIPTION	*PART NUMBER	ITEM	DESCRIPTION	PART NUMBER
1	Motor	2146AC	21	Filler Breather	T3-1002-06
2	Pump Manifold	N-11	22	Clip	1168AA
3	Reservoir	TV24	23	Plumbing Plug	TV-1001-11
4	Casing Upper Lower	1145BC 1144BC	24	Clip	1130CA
5	Handle	12178A	25	Bolt	14208A
5a	Ball	1266AA	26	Nut For Clip	1202AA
6	Bolt	A-01-5	27	Vent Screw	1167AA
7	Lowering Valve Assy	V-12	28	Bolt	1124AA
8	Relief Valve	RV-16	29	Washer	1261BA
9	Cap	1142BB	30	Hose	TV24-11
10	Bolt	1153BA	31	Plumbing Connector	1991AA
11	"O" Ring	1213AA	32	"O" Ring	1006AA
12	Filter	1160BB	33	Screw	1304AA
13	"O" Ring	1140AA	34	Screw	P3-1021-50
14	Rubber Boot	1277AA	35	Lockwasher	1479AA
15	"O" Ring	1912AA	36	Bleed Screw	2057AA
16	Pump	P-25	37	Snap Ring	1104AA
17	Switch	P461-2	38	Shaft Seal	N-1-1
18	Bolt	1297AA	39	Coupling	MA-5-1
19	Section Cover	2156AA	40	Cover	WA11-9
20	Suction Tube	2231AA	41	Filter Block Assy	A1-3000-00

\*NOTE: For units with serial numbers below 12044, See P500 series breakdown. (Page 6)  
 ● NOTE: Part numbers listed are for parts painted Rotary blue. If other color is required, please specify when ordering.

# P513 (3 Phase)

Used On: SM250, SM270, FLS12

Manufacturer: Fenner Stone

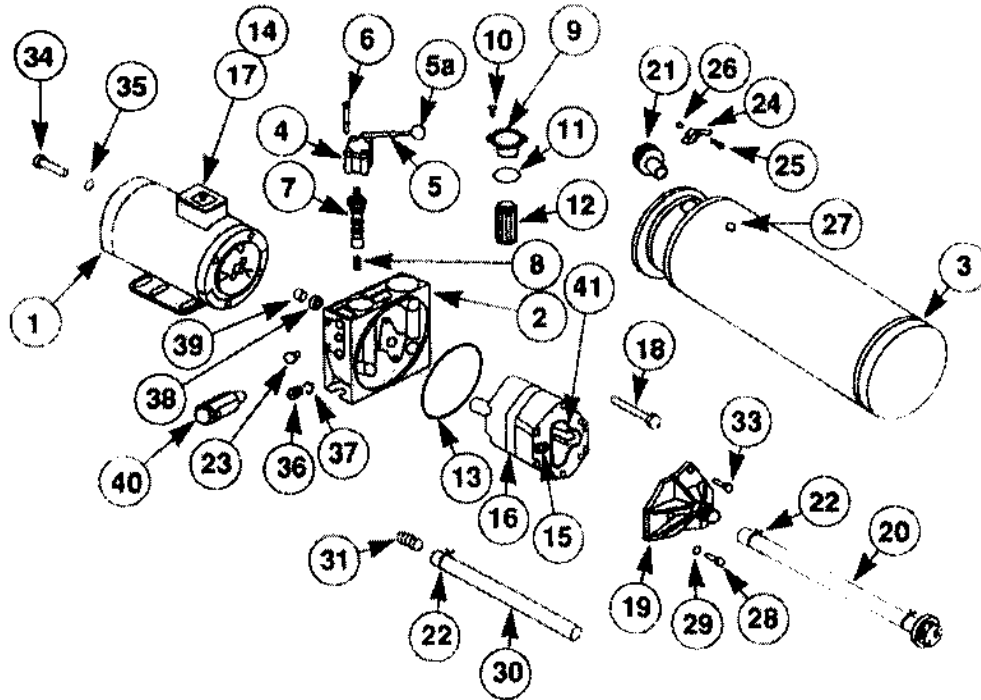
PANZITTA SALES & SERVICE

72 George Avenue

Wilkes-Barre, PA 18705

570-822-6720 800-822-6720

www.panzittasales.com

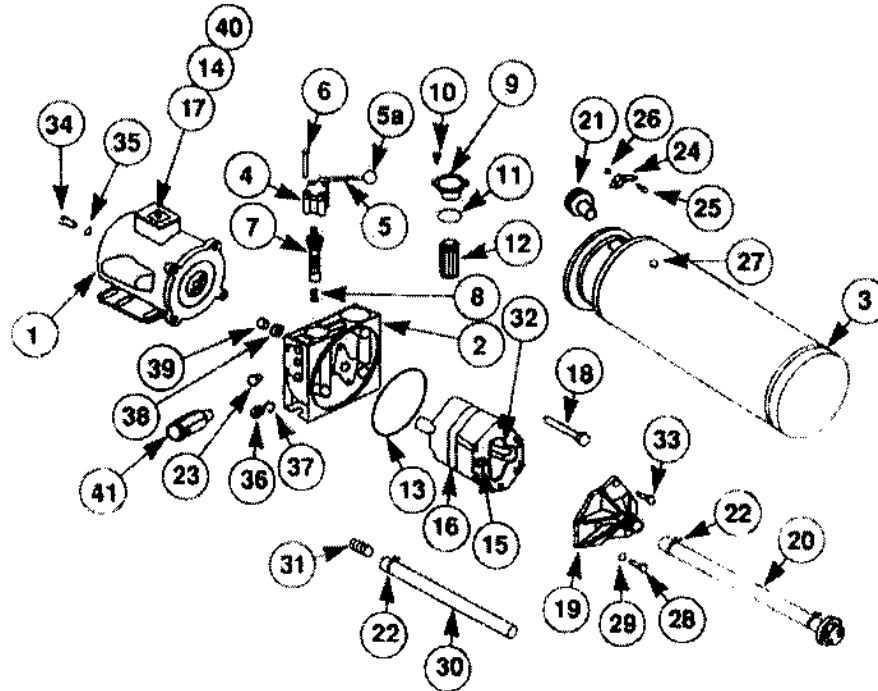


P513 REPLACEMENT PARTS LIST					
ITEM	DESCRIPTION	PART NUMBER	ITEM	DESCRIPTION	PART NUMBER
1	Motor	2237AC	21	Filter Breather	T3-1002-08
2	Pump Manifold	N-16	22	Clip	1168AA
3	Reservoir	2234AB	23	Plumbing Plug	TV-1001-11
4	Casing Upper/Lower	1145BC 1144BC	24	Clip	1138CA
5	Handle	1217BA	25	Bolt	1420BA
5a	Ball	1266AA	26	Nut For Clip	1202AA
6	Bolt	A-01-5	27	Vent Screw	1167AA
7	Lowering Valve Assy	V-12	28	Bolt	1124AA
8	Relief Valve	RV-16	29	Washer	1261BA
9	Cap	1142BB	30	Return Hose	1982BA
10	Bolt	1153BA	31	Plumbing Connector	1991AA
11	O' Ring	1213AA	32	O' Ring	1086AA
12	Filter	1160BB	33	Screw	1384AA
13	O' Ring	1140AA	34	Screw	P3-1021-50
14	Cover	WA11-9	35	Lockwasher	1479AA
15	O' Ring	1912AA	36	Bleed Screw	2057AA
16	Pump	P-2.5	37	Snap Ring	1104AA
17	Switch	1329AA	38	Shaft Seal	N-1-1
18	Bolt	1297AAQ	39	Coupling	MA-5-1
19	Suction Cover	2156AA	40	Filter Block Assy	A1-3000-00
20	Suction Tube	2231AA	41	O' Ring	1086AA

# P515

Used On: SM250, SM270, FLS12  
 Manufacturer: Fenner Stone

PANZITTA SALES & SERVICE  
 72 George Avenue  
 Wilkes-Barre, PA 18705  
 570-822-6720 800-822-6720  
 www.panzittasales.com



P515 REPLACEMENT PARTS LIST

ITEM	DESCRIPTION	*PART NUMBER	ITEM	DESCRIPTION	PART NUMBER
1	Motor	2235AC	21	Filler Breather	T3-1002-08
2	Pump Manifold#	N-16	22	Clip	1168AA
3	Reservoir	2234AB	23	Plumbing Plug	TV-1001-11
4	Casing Upper Lower	1145BC 1144BC	24	Clip	1138CA
5	Handle	1217BA	25	Bolt	1420BA
5a	Ball	1266AA	26	Nut For Clip	1202AA
6	Bolt	A-01.5	27	Vent Screw	1167AA
7	Lowering Valve Assy	V-12	28	Bolt	1124AA
8	Relief Valve	KV-16	29	Washer	1261BA
9	Cap	1142B0	30	Return Hose	1982BA
10	Bolt	1153BA	31	Plumbing Connector	1991AA
11	"O" Ring	1213AA	32	"O" Ring	1086AA
12	Filter	1160BB	33	Screw	1384AA
13	"O" Ring	1140AA	34	Screw	13-1021-50
14	Rubber Boot	1277AA	35	Lockwasher	1479AA
15	"O" Ring	1912AA	36	Bleed Screw	2057AA
16	Pump	P-2.5	37	Snap Ring	1104AA
17	Switch	1461-2	38	Shaft Seal	N-1-1
18	Bolt	1297AA	39	Coupling	MA-S-1
19	Suction Cover	2156AA	40	Cover	WA11-9
20	Suction Tube	2231AA	41	Filter Block Assy	A1-3000-00

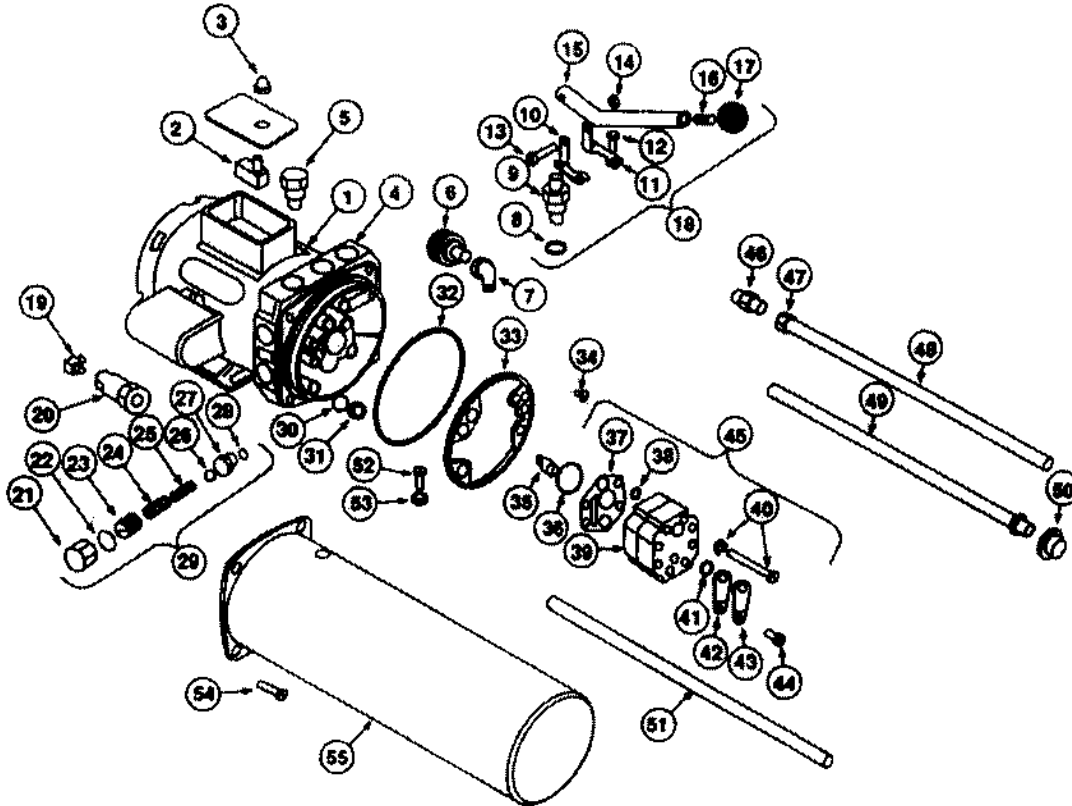
## FENNER STONE PARTS CROSS REFERENCE CHART

ORRIGINAL PART NUMBER	CURRENT PART NUMBER	DESCRIPTION
A-01-1	1144BC	Lower Handle Housing
A-01-2	1145BC	Upper Handle Housing
A-01-3	1217BA	Handle
A-01-4	1266AA	Handle Ball
A-01-5	1178AA	Bolt
L-11-10	1395AA	Roll Pin
L-11-6	1250CA	Clip
L-11-7	1251BA	Stopper
MA-2-2	2146AC	Motor P502
MA-3-2	1556AC	Motor P504
MA-4-2	1558AC	Motor P501
MA-5-1	1118AA	Coupling
N-08	N-11	Manifold
N-1-1	1094AA	Shaft Seal
N-1-11	1213AA	Filter "O" Ring
N-1-2	N-17	Manifold
N-1-3	1142BB	Filter Cap
N-1-4	1153BA	Bolt
N-1-5	1160BB	Filter
PL-08-2	P-0.8	Pump
PL-25-2	P-2.5	Pump
PL-31-1	1002AC	Load Delay
PL-31-4	1197AA	Bolt
PL31-6	1261BA	"O" Ring
PL31-8	1086AA	"O" Ring"
S-04-3	1389AA	Screen
S-04-4	1390AA	Spring
TV20-1	2130AC	Suction Cover
TV20-10	1343AA	Suction Tube
TV20-12	1379BC	Tank
TV20-13	1420BA	Screw
TV20-2	1138CA	Clip
TV20-3	1140AA	Tank "O" Ring
TV20-3	1140BA	Tank "O" Ring
TV20-4	1167AA	Vent Screw
TV20-6	1202AA	Nut
V-07-13	1198BA	"O" Ring
V-07-14	1199BA	"O" Ring
W-05-4	1277AA	Switch Boot

# P518

Used On: 4 Post Surface Mounted Lifts

Manufacturer: John S. Barnes



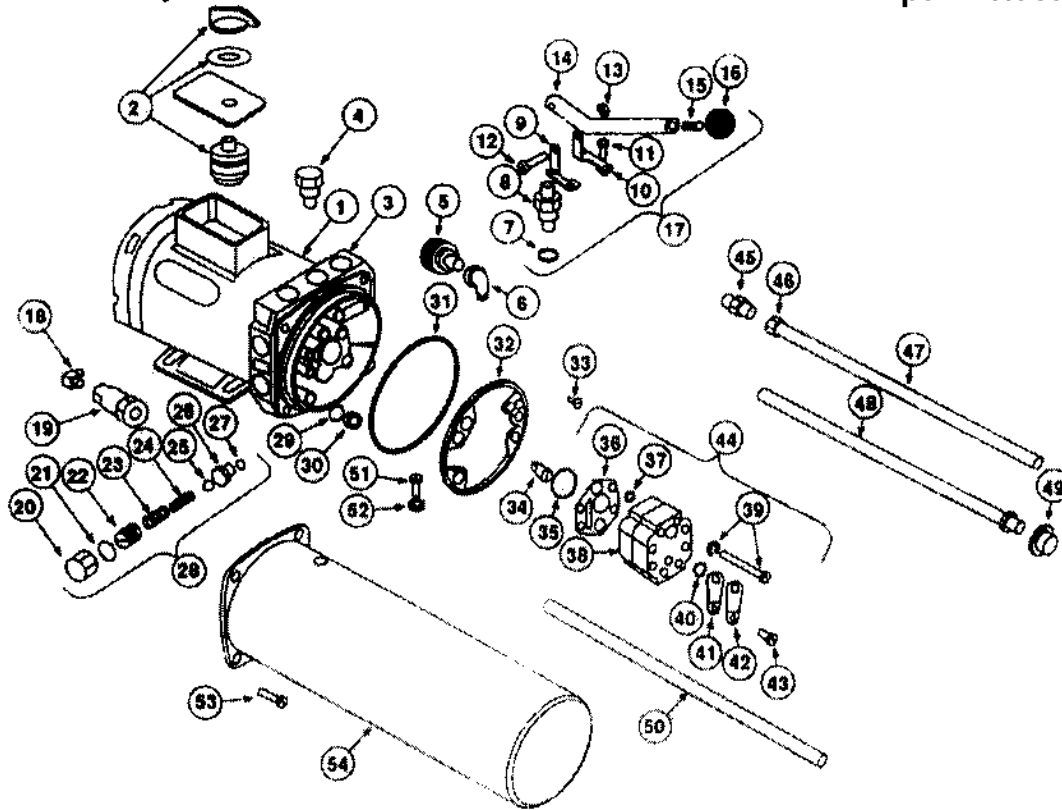
P518 REPLACEMENT PARTS LIST

ITEM	DESCRIPTION	PART NO	ITEM	DESCRIPTION	PART NO	ITEM	DESCRIPTION	PART NO
1	AC Motor	2190360	20	Filter	2430032	39	Pump	1002290
2	Switch - Push Button	2381009	21	Hex Cap	2400024	40	Bolts	2130073
3	Boot - Push Button	2380268	22	Gasket	2260061	41	"O" Ring	2120040
4	Adapter	2210652	23	Adjustment Screw	2130050	42	Retainer	2340076
5	Check Valve	2180040	24	Spring	2110001	43	Locking Spring	2340075
6	Breather	2500006	25	Spring	2110112	44	Screw	2130121
7	Elbow 45°	2270022	26	Ball	2100005	45	Pump & Parts	1001870
8	Spacer	2590053	27	Valve Seat	2470020	46	Connector	2270116
9	Release Valve Assy	2180062	28	"O" Ring	2120076	47a	Nut Tube Sleeve	2270060
10	Left Bracket	2440098	29	Relief Valve Kit	2180003	47b	Sleeve	2270098
11	Right Bracket	2440099	30	"O" Ring	2120038	48	Tube	2310037
12	Socket Head Screws	2130003	31	Retainer	2240023	49	Tube	2310188
13	Cap Screw	2130349	32	"O" Ring	2120058	50	Strainer	2430011
14	Nut Stop	2140061	33	Retainer	2240039	51	Tube	2310187
15	Handle Head Set	2530027	34	Screws	2130117	52	Screw	2130361
16	Screw	2130346	35	Coupling	2390005	53	Washer	2120238
17	Plastic Knob	2530008	36	"O" Ring	2120026	54	Screw	2130122
18	Release Valve Kit	2180631	37	Gasket	2260068	55	Reservoir	2280762
19	Elbow 90°	2270218	38	"O" Ring	2260026			

# P519 (3 Phase)

Used On: 4 Post Surface Mounted Lifts  
 Manufacturer: John S. Barnes

PANZITTA SALES & SERVICE  
 72 George Avenue  
 Wilkes-Barre, PA 18705  
 570-822-6720 800-822-6720  
 www.panzittasales.com

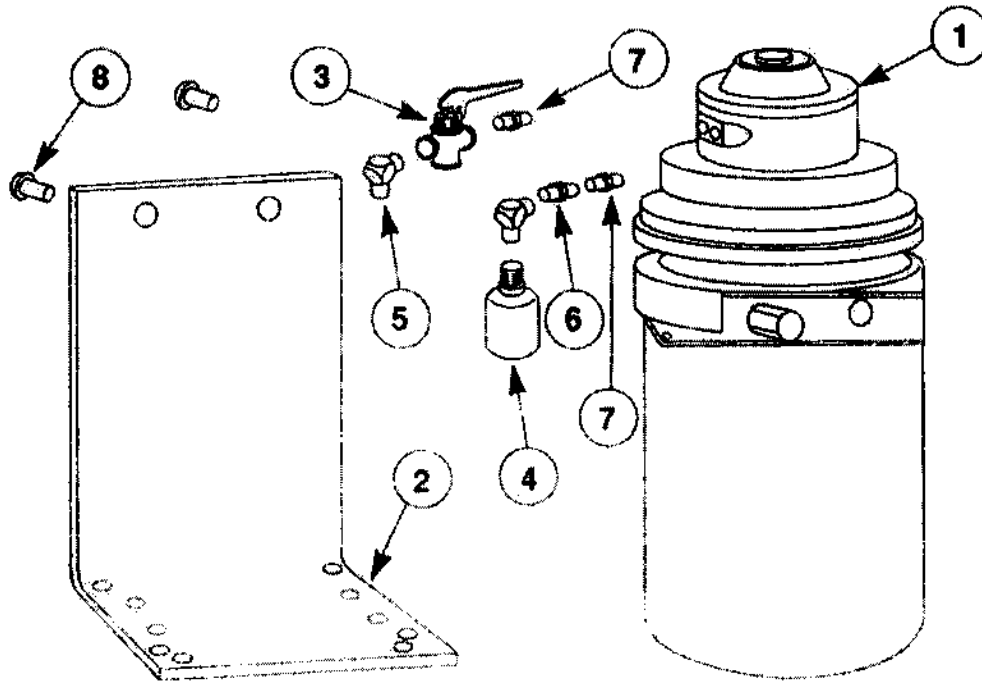


P519 REPLACEMENT PARTS LIST								
ITEM	DESCRIPTION	PART NO	ITEM	DESCRIPTION	PART NO	ITEM	DESCRIPTION	PART NO
1	AC Motor	2190351	20	Hex Cap	2400024	39	Bolts	1002290
2	Switch - Push Button	2380254	21	Gasket	2260061	40	"O" Ring	2130073
3	Adapter	2210552	22	Adjustment Screw	2130093	41	Retainer	2120040
4	Check Valve	2180060	23	Spring	2110001	42	Locking Spring	2340076
5	Breather	2500006	24	Spring	2110112	43	Screw	2340075
6	Elbow	2270022	25	Ball	2100005	44	Pump & Parts	2130121
7	Sparer	2590053	26	Valve Seat	2470020	45	Connector	1001870
8	Release Valve Ass'y	2180062	27	"O" Ring	2120076	46a	Nut Tube Sleeve	2270116
9	Left Bracket	2440098	28	Relief Valve Kit	2180003	46b	Sleeve	2270089
10	Right Bracket	2440099	29	"O" Ring	2120038	47	Tube	2270093
11	Socket Head Screws	2130003	30	Retainer	2240023	48	Tube	2310037
12	Cap Screw	2130349	31	"O" Ring	2120058	49	Strainer	2310188
13	Nut Stop	2140061	32	Retainer	2240039	50	Tube	2430011
14	Handle	2530027	33	Screws	2130117	51	Screw	2310187
15	Head Set Screw	2130346	34	Coupling	2390005	52	Washer	2130361
16	Plastic Knob	2530008	35	"O" Ring	2120026	53	Screw	2120238
17	Release Valve Kit	2180631	36	Gasket	2260068	54	Reservoir	2130122
18	Elbow 90°	2270218	37	"O" Ring	2260026			
19	Filter	2430032	38	Pump	1002290			

# P522

Used On: PAL, PFX MODELS (Includes MPAL Model)

Manufacturer: John S. Barnes



P522 REPLACEMENT PARTS		
ITEM NO.	DESCRIPTION	PART NO.
1	Power Unit	P522-1
2	Bracket	P522-3
3	Air Valve	P522-6
4	Muffler	FA515-7
5	Elbow	FJ7191-1
6	Coupling	P522-8
7	Nipple	P522-4
8	5/8"-18NC HSBHS x 1/2" Lg.	2 REQ'D