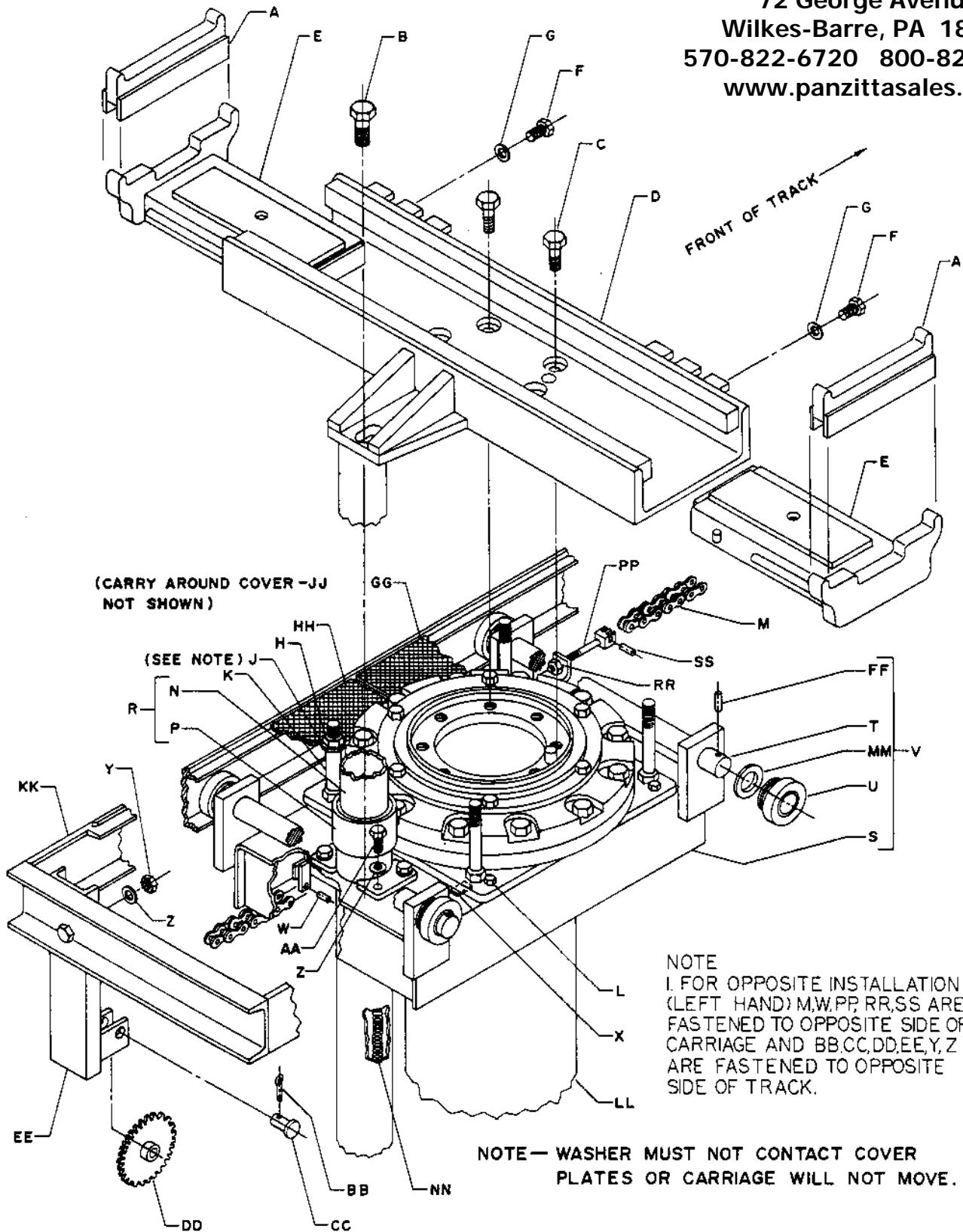


PANZITTA SALES & SERVICE
72 George Avenue
Wilkes-Barre, PA 18705
570-822-6720 800-822-6720
www.panzittasales.com

MANITOWOC LIFTS
INSTALLATION INSTRUCTIONS AND PARTS LIST
FORE & AFT
ELECTRIC OIL OPERATED ADJUSTABLE TRUCK LIFT
A-2BM3A
24,000 LBS CAPACITY
12,000 LBS PER PLUNGER

A-2BM3A.max



T13974

FIG. 7

PARTS LIST FOR FORWARD PICK UP BASE AND CARRIAGE ASSEMBLY WITH AUTOMATIC LOCK

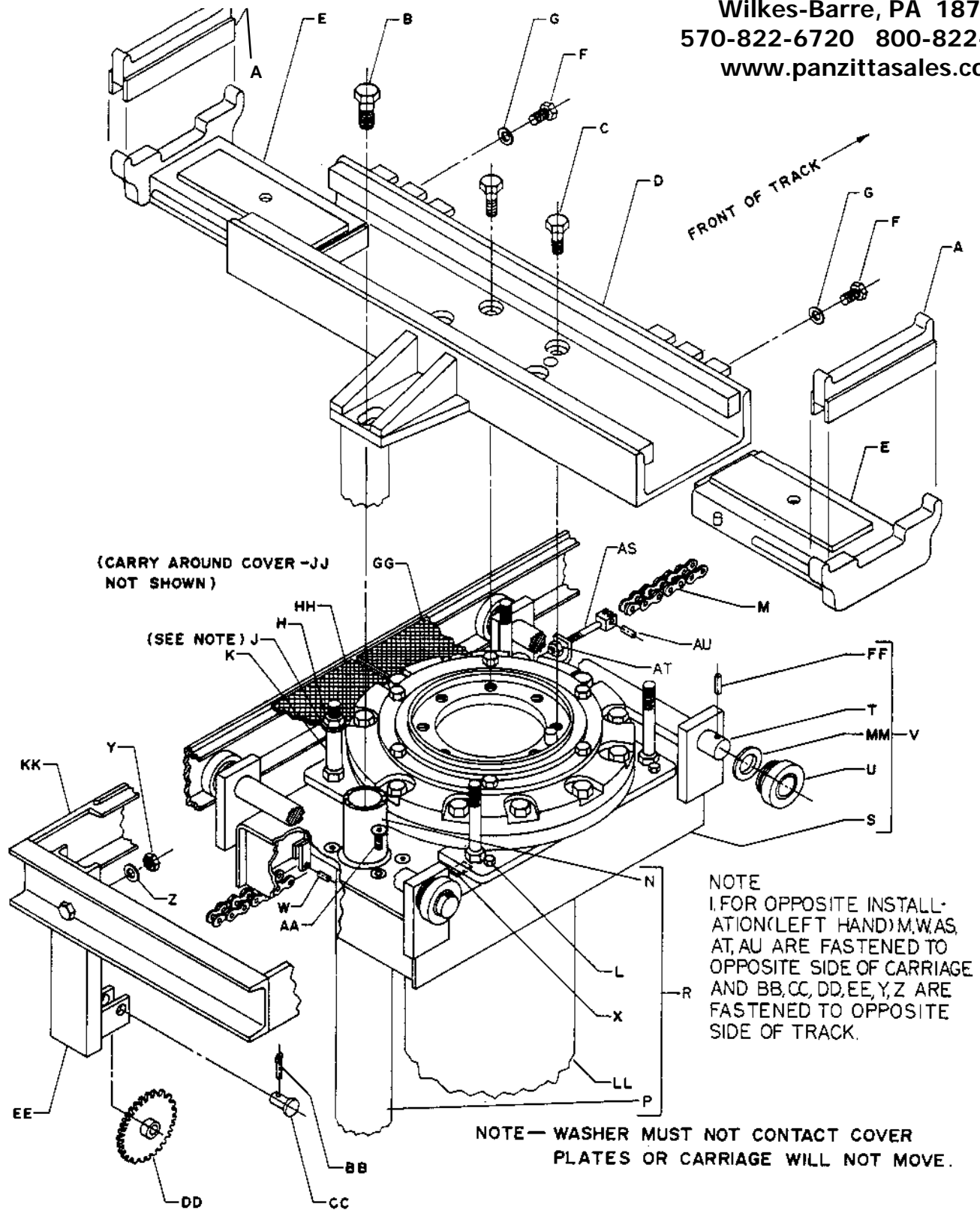
A-2BM3A

A-2BM3A.max

PANZITTA SALES & SERVICE
72 George Avenue
Wilkes-Barre, PA 18705
570-822-6720 800-822-6720
www.panzittasales.com

When ordering replacement parts, always mention lift model number and serial number.

Code No. No. Req.	Symbol No.	Description	Code No. No. Req.	Symbol No.	Description		
A	2	R13323	Height Adapter	Y	2	K01945	Hex Nut 1/2"-13
B	1	K01914-50	Hex Hd. Bolt 1"-8 x 2-1/2"	Z	6	K02455	Lockwasher 1/2"
C	6	Q10412-01	Hex Hd. Bolt 3/4"-10 x 2-1/4"	AA	4	K01909	Hex Hd. Bolt 1/2"-13 x 1"
D	1	T13949	Forward Pick-up Base	BB	1	K02128	Cotter Pin 1/8" Dia. x 1"
E	2	R13487	Forward Pick-up Slide	CC	1	Q10167-13	Clevis Pin 5/8" x 1-3/4"
F	2	K01902	Hex Hd. Bolt 3/8"-16 x 1"	DD	1	K90624	Sprocket Assembly
G	2	K50775	Lockwasher 3/8"	EE	1	N21712-01	Sprocket Support (Rear)
H	8	K01948	Hex Nut 3/4"-10	FF	4	K50511	Groove Pin 3/16" Dia. x 2"
J	4	K06011	Flat Washer	GG	1	R13389-04	Cover Assembly
K	4	K88446-06	Spacer	HH	1	R13389-05	Cover Assembly
L	4	K01914-40	Hex Hd. Bolt 1/2"-13 x 2-1/2"	JJ	3	R13299	Cover Assembly (10 Ft., 11 Ft., 12 Ft.)
M	1	K89040-17	Chain (10 Ft.)	JJ	4	R13299	Cover Assembly (13 Ft., 14 Ft.)
M	1	K89040-24	Chain (11 Ft.)	JJ	5	R13299	Cover Assembly (15 Ft., 16 Ft.)
M	1	K89040-18	Chain (12 Ft.)	JJ	6	R13299	Cover Assembly (17 Ft., 18 Ft.)
M	1	K89040-25	Chain (13 Ft.)	JJ	7	R13299	Cover Assembly (19 Ft., 20 Ft.)
M	1	K89040-19	Chain (14 Ft.)	JJ	8	R13299	Cover Assembly (21 Ft., 22 Ft.)
M	1	K89040-26	Chain (15 Ft.)	KK	1	R19000-01	Track Kit (10 Ft.)
M	1	K89040-20	Chain (16 Ft.)	KK	1	R19000-02	Track Kit (11 Ft.)
M	1	K89040-27	Chain (17 Ft.)	KK	1	R19000-03	Track Kit (12 Ft.)
M	1	K89040-21	Chain (18 Ft.)	KK	1	R19000-04	Track Kit (13 Ft.)
M	1	K89040-28	Chain (19 Ft.)	KK	1	R19000-05	Track Kit (14 Ft.)
M	1	K89040-22	Chain (20 Ft.)	KK	1	R19000-06	Track Kit (15 Ft.)
M	1	K89040-29	Chain (21 Ft.)	KK	1	R19000-07	Track Kit (16 Ft.)
M	1	K89040-23	Chain (22 Ft.)	KK	1	R19000-08	Track Kit (17 Ft.)
N	1	T11968-01	Telescoping Post Assembly	KK	1	R19000-09	Track Kit (18 Ft.)
P	1	N20224-01	Stationary Tube Assembly	KK	1	R19000-10	Track Kit (19 Ft.)
R	1	K89529-01	Automatic Lock Assembly (Includes B, N, P & NN)	KK	1	R19000-11	Track Kit (20 Ft.)
S	1	T18511-G1	Carriage Weldment	KK	1	R19000-12	Track Kit (21 Ft.)
T	2	N20283	Carriage Axle	KK	1	R19000-13	Track Kit (22 Ft.)
U	4	K89017	Carriage Wheel Assembly	LL	1	T13944-01	Plunger & Cylinder Assembly
V	1	T18512-G1	Carriage Assembly (Includes S, T, U, FF & MM)	MM	4	K89458	Washer
W	1	K78378-39	Roll Pin 3/16 Dia. x 1-3/8"	NN	1	K89526	Spring
X	16	K88438	Shim	PP	1	K90604	Anchor Rod Assembly
				RR	1	Q10977-03	Locknut 5/16"-18
				SS	1	K78378-48	Rollpin 5/32" Dia. x 1-3/8"



T18525

FIG. 8

FORWARD PICK UP BASE AND CARRIAGE ASSEMBLY WITH OPTIONAL REMOTE CONTROL LOCK LEG

A-2BM3A

A-2BM3A.max

When ordering replacement parts, always mention lift model number and serial number.

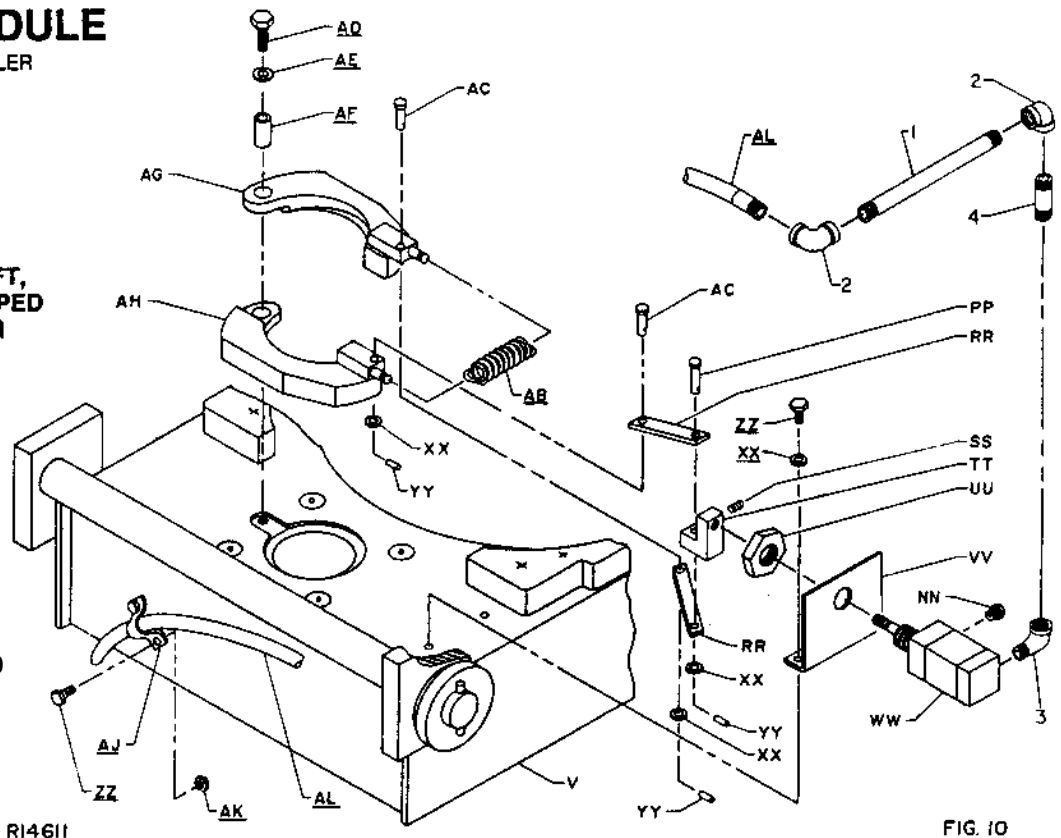
Code No.	Symbol No.	Description	Code No.	Symbol No.	Description
A	2	R13323	JJ	4	R13299
B	1	K01914-50	JJ	5	R13299
C	6	Q10412-01	JJ	6	R13299
D	1	T13949	JJ	7	R13299
E	2	R13487	JJ	8	R13299
F	2	K01902	KK	1	R19000-01
G	2	K50775	KK	1	R19000-02
H	8	K01948	KK	1	R19000-03
J	4	K06011	KK	1	R19000-04
K	4	K88446-06	KK	1	R19000-05
L	4	K01914-40	KK	1	R19000-06
M	1	K89040-17	KK	1	R19000-07
M	1	K89040-24	KK	1	R19000-08
M	1	K89040-28	KK	1	R19000-09
M	1	K89040-25	KK	1	R19000-10
M	1	K89040-19	KK	1	R19000-11
M	1	K89040-26	KK	1	R19000-12
M	1	K89040-20	KK	1	R19000-13
M	1	K89040-27	LL	1	T13944-02
M	1	K89040-21			Plunger & Cylinder Assembly (See Page 22)
M	1	K89040-28	MM	4	K89458
M	1	K89040-22	NN	1	Q10850-01
M	1	K89040-29	PP	1	Q10167-10
M	1	K89040-23	RR	1	K89571-01
N	1	T18522-G1	SS	1	K82287-24
P	1	N21352	TT	1	N23000
R	1	K93578-G1	UU	1	Q10404-03
S	1	T18514-G1	VV	1	N23001
T	2	N20283	WW	1	K90133
U	4	K89017	XX	5	K66871
V	1	T18515-G1	YY	3	Q10038-19
W	1	K78378-39	ZZ	4	K05287
X	16	K88438	AB	1	K91205
Y	2	K01945	AC	2	Q10167-09
Z	6	K02455	AD	1	K03782
AA	4	Q10098-48	AE	1	K02205
BB	1	K02128	AF	1	K77749-05
CC	1	Q10167-13	AG	1	N21356
DD	1	K90624	AH	1	N21357
EE	1	N21712-01	AJ	1	K90171
FF	4	K50511	AK	2	K01941
GG	1	R13389-04	AL	1	K90150-01
HH	1	R13389-05	AS	1	K90604
JJ	3	R13299	AT	1	Q10977-03
			AU	1	K78378-48
					Roll Pin 5/32" Dia. x 3/4"
					Washer
					Breather Vent
					Clevis Pin 1/4" Dia. x 1-1/4"
					Linkage Bar
					Set Screw #10-32 x 1/4"
					Mounting Bar
					Jam Nut 3/4"-16
					Mounting Bracket
					Air Cylinder
					Washer
					Spiral Pin 3/32" Dia. 5/8"
					Hex Hd. Bolt 1/4-20 x 1/2"
					Spring
					Clevis Pin 1/4" Dia. x 1"
					Hex Hd. Bolt 5/16" x 1-3/4"
					Flat Washer 5/16"
					Spacer
					Jaw Assembly (Front R.H.)
					Jaw Assembly (Front L.H.)
					Hose Clamp
					Hex Nut 1/4"-20
					Air Hose
					Anchor Rod Assembly
					Locknut 5/16"-18
					Roll Pin 3/32" Dia. x 3/4"

FITTING SCHEDULE

ITEMS FURNISHED BY INSTALLER

Code No.	Description
1	Nipple, 1/8" x 6" lg.
2	Elbow, 1/8" x 90°
3	Street Elbow, 1/8" 90°
4	Nipple, 1/8" x 1-1/2" lg.

WHEN ORDERED WITH LIFT, PARTS SHOWN ARE SHIPPED ASSEMBLED EXCEPT FOR ITEMS UNDERLINED.

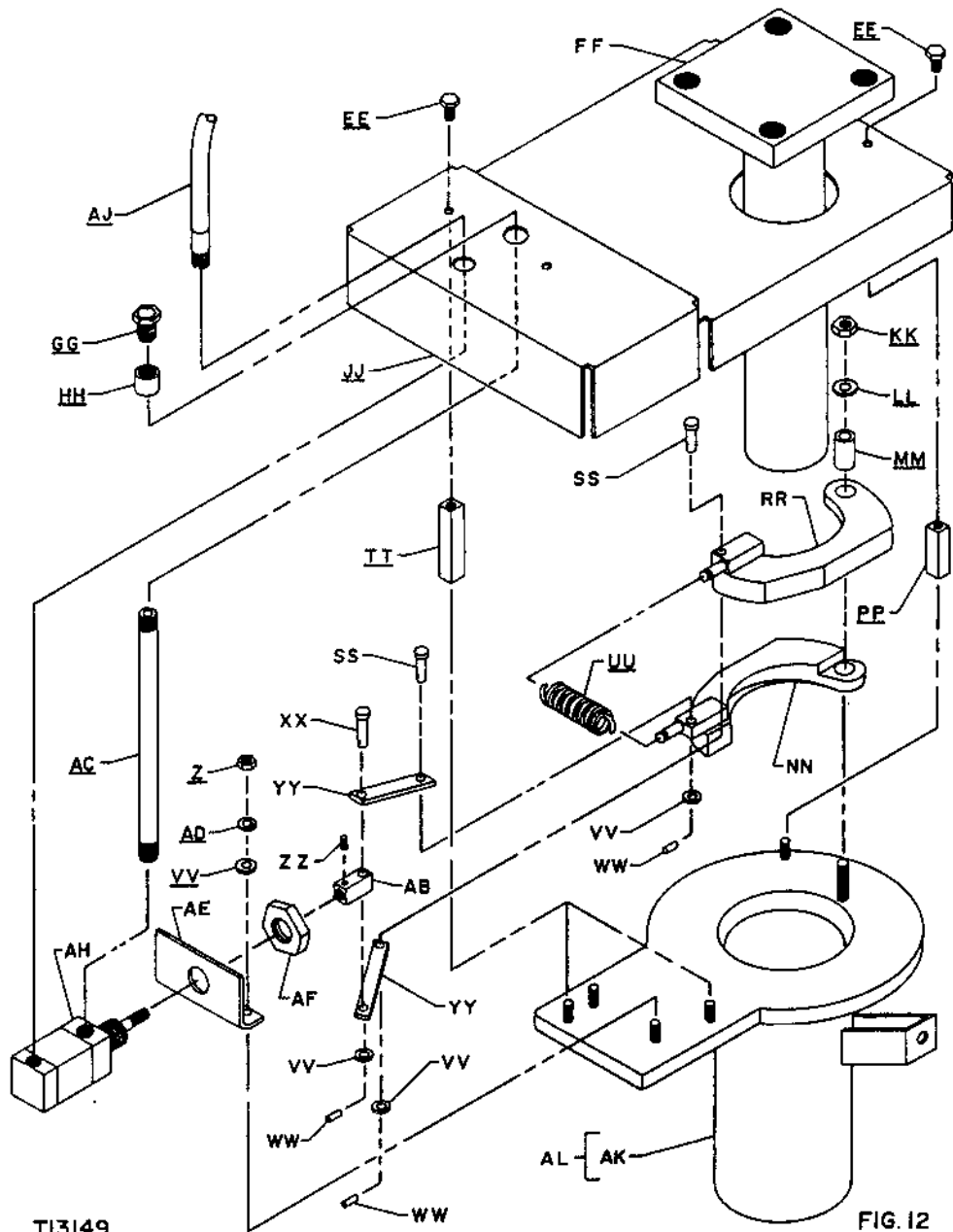


PANZITTA SALES & SERVICE
 72 George Avenue
 Wilkes-Barre, PA 18705
 570-822-6720 800-822-6720
 www.panzittasales.com

FORWARD PICK UP BASE AND CARRIAGE ASSEMBLY FOR OPTIONAL REMOTE CONTROL LOCK LEG PARTS LIST

When ordering replacement parts, always mention lift model number and serial number.

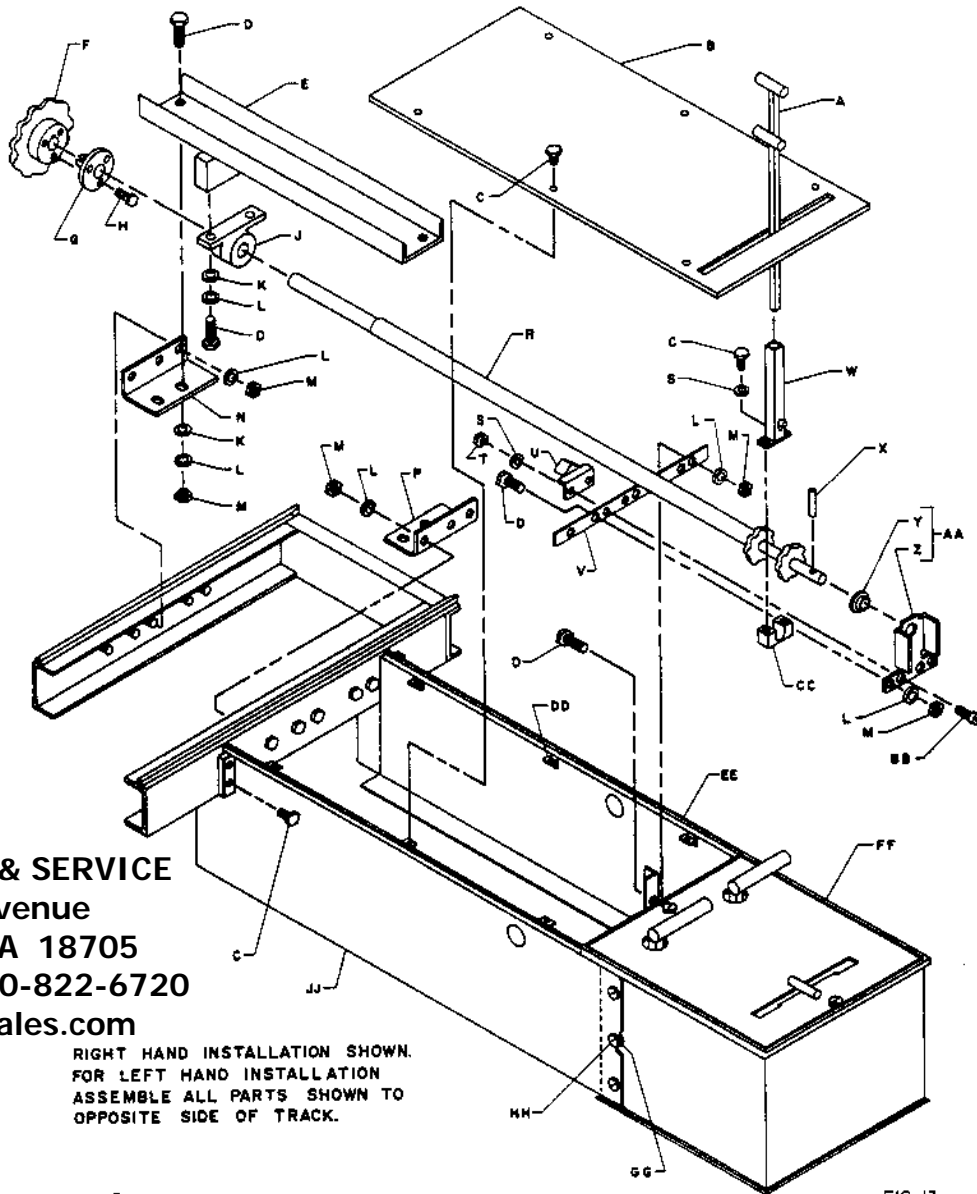
Code No. No. Req.	Symbol No.	Description	Code No. No. Req.	Symbol No.	Description		
EE	3	K05287	Hex Hd. Bolt 1/4"-20 x 1/2"	WW	3	Q10038-19	Spirol Pin 3/32" Dia. x 5/8"
FF	1	T19001	Inner Post Assembly	XX	1	Q10167-10	Clevis Pin 1/4" Dia. x 1-1/4"
GG	1	Q10850-01	Breather Vent	YY	2	K89571-01	Linkage Bar
HH	1	K40379	Coupling 1/8"	ZZ	1	K62287-24	Set Screw #10-32 x 1/4"
JJ	1	T19002	Cover, Remote Control Leg	AB	1	K90129	Mounting Bar
KK	1	K01942	Hex Nut 5/16"-18	AC	1	N16927-17	Pipe 1/8" x 11"
LL	1	K02205	Flat Washer 5/16"	AD	1	K50773	Lockwasher 1/4"
MM	1	K77749-04	Spacer	AE	1	N21354	Mounting Bracket
NN	1	N21357	Jaw Assembly (Rear L.H.)	AF	1	Q10404-03	Jam Nut 3/4"-16
PP	1	K90206-01	Spacer	AH	1	K90133	Air Cylinder
RR	1	N21356	Jaw Assembly (Rear R.H.)	AJ	1	K90150-02	Air Hose
SS	2	Q10167-09	Clevis Pin 1/4" Dia. x 1"	AK	1	N23004	Outer Post Assembly
TT	2	K90206-02	Spacer	AL	1	K95005	Remote Control Leg Assembly (Includes FF & AK)
UU	1	K91205	Spring				
VV	5	K66871	Washer				



REAR TRENCH BOX AND OPTIONAL REMOTE CONTROL PARTS

When ordering replacement parts, always mention lift model number and serial number.

Code No. No. Req.	Symbol No.	Description	Code No. No. Req.	Symbol No.	Description	
A	1	R16171-02	V	1	N21460	Ratchet Support Bar
B	1	T13872-01	W	1	N21714	Handle Holder Assembly
C	12	K05287	X	1	K78378-39	Roll Pin 3/16" Dia. x 1-3/8"
D	10	K01902	Y	1	N17706-40	Flanged Bearing
E	1	N21458	Z	1	N21474	Ratchet Support Weldment
F	1	K90615	AA	1	N21470	Ratchet Support Assembly (Includes Y & Z)
G	1	K90616	BB	2	Q10033-69	Socket Hd. Cap Screw 1/4"-20 x 3/4"
H	3	K07565	CC	1	K90609	Pivot Block
J	1	K90618	DD	6	K81038-24	Speed Nut 1/4"-20
K	6	K02206	EE	1	T09499-05	Side Panel Weldment (R.H.)
L	16	K50775	FF	1	T09396	Control Box Assembly Automatic Locks (See Page 15)
M	14	K01943	FF	1	T19003	Control Box Assembly Remote Locks (See Page 23)
N	1	N21466-02	GG	6	K66871	Flat Washer
P	1	N21466-01	HH	6	K60521-24	Self Tapping Screw #14 x 5/8"
R	1	N21717-01	JJ	1	T09499-06	Side Panel Weldment (L.H.)
S	4	K43948				
T	2	K01941				
U	1	K90607				



PANZITTA SALES & SERVICE
 72 George Avenue
 Wilkes-Barre, PA 18705
 570-822-6720 800-822-6720
 www.panzittasales.com

RIGHT HAND INSTALLATION SHOWN.
 FOR LEFT HAND INSTALLATION
 ASSEMBLE ALL PARTS SHOWN TO
 OPPOSITE SIDE OF TRACK.

T13882

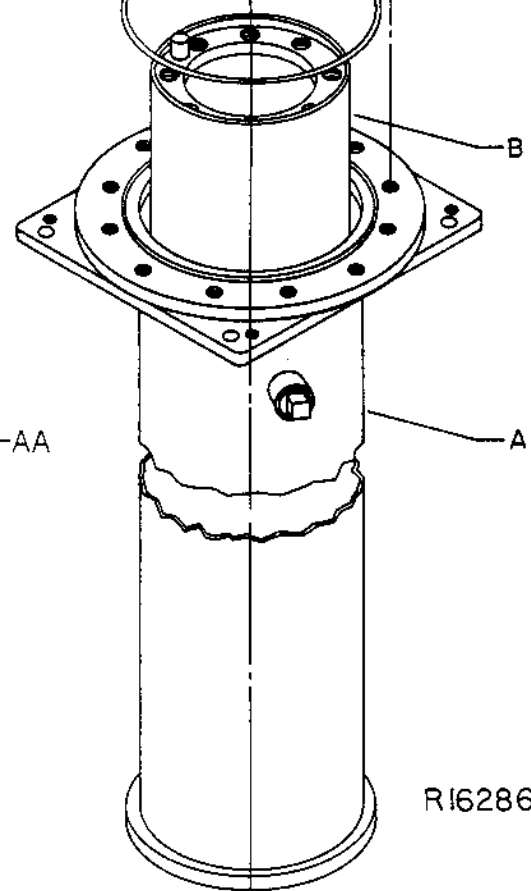
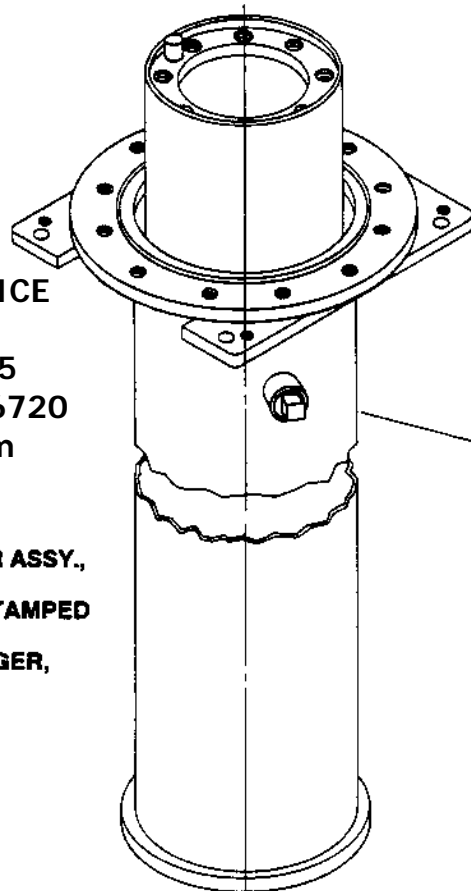
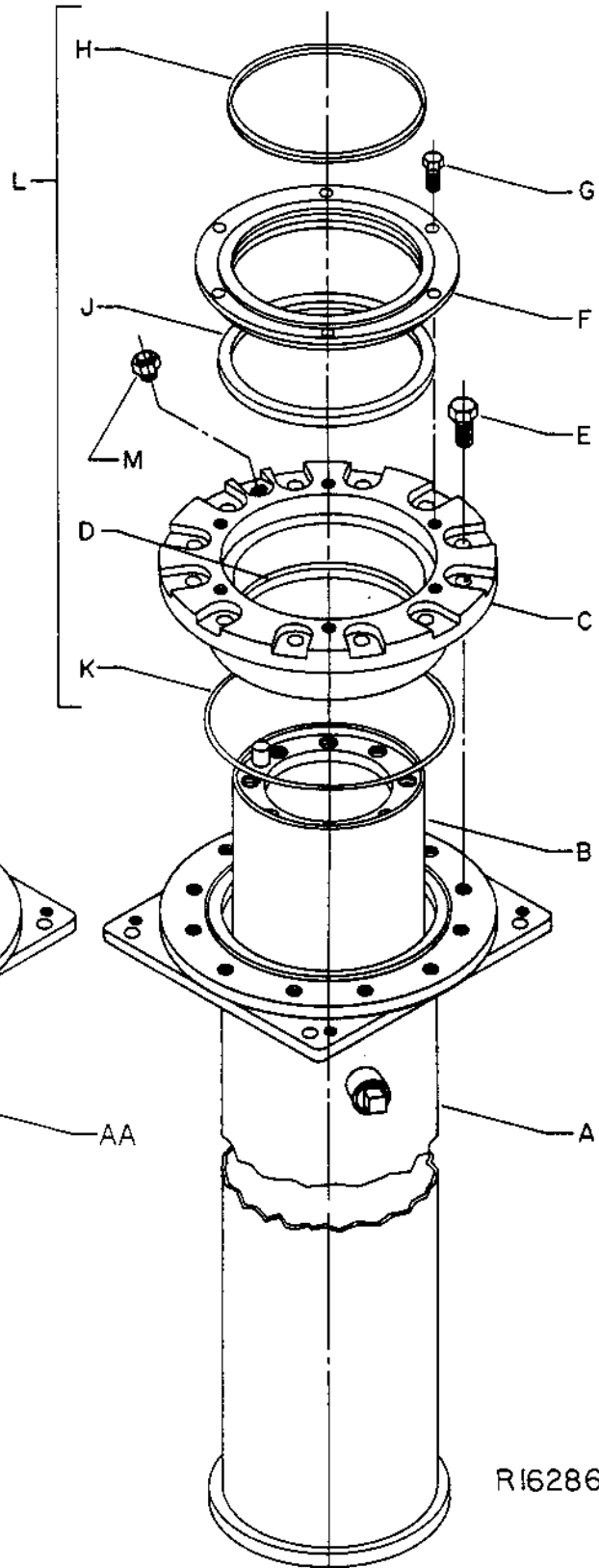
FIG. 13

EXTENSION BOX AND CONTROL BOX

When ordering replacement parts, always mention lift model number and serial number.

Code No. No. Req.	Symbol No.	Description
FOR AUTO LOCK LEGS		
	1	T13944-01
A	1	T13938-G1
B	1	T13935-G2
C	1	T13943-02
D	1	Felt Wiper
E	12	Q10412-01
F	1	R18229-02
G	6	K01907
H	1	Wiper
J	1	Seal
K	1	O-Ring
L	1	K34301
M	1	N21812-G1

Code No. No. Req.	Symbol No.	Description
FOR REMOTE LOCK LEGS		
	1	T13944-02
AA	1	T13938-G2
B	1	T13935-G2
C	1	T13943-02
D	1	Felt Wiper
E	12	Q10412-01
F	1	R18229-02
G	6	K01907
H	1	Wiper
J	1	Seal
K	1	O-Ring
L	1	K34301
M	1	N21812-G1



R16286

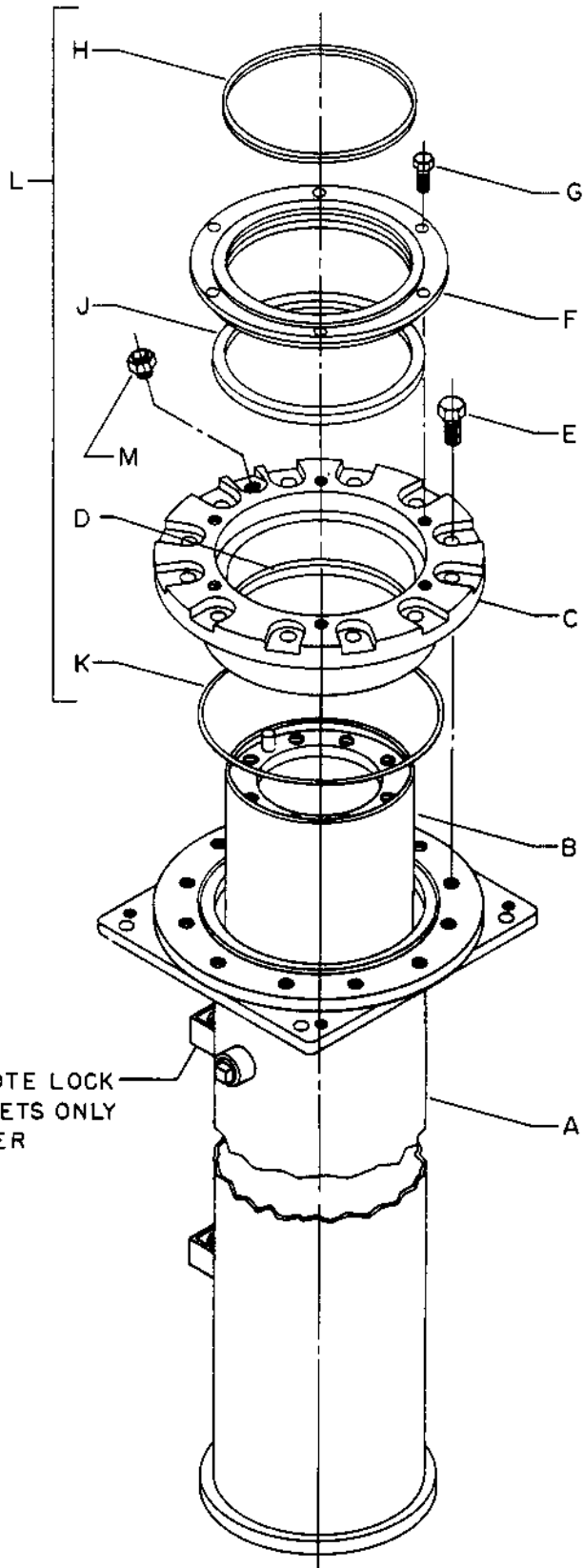
PLUNGER AND CYLINDER ASSEMBLY (FRONT)

PANZITTA SALES & SERVICE
 72 George Avenue
 Wilkes-Barre, PA 18705
 570-822-6720 800-822-6720
 www.panzittasales.com

NOTE:
 WHEN ORDERING PLUNGER ASSY.,
 SPECIFY SYMBOL NO. AND
 BEARING CODE LETTER STAMPED
 ON TOP OF PLUNGER.
 FOR REPLACEMENT PLUNGER,
 ORDER KIT NO. K92936

When ordering replacement parts, always mention lift model number and serial number.

Code No. No. Req.	Symbol No.	Description
	1	T13945-01
A	1	T13939-G1
B	1	T13935-G1
C	1	T13943-02
D	1	Felt Wiper
E	12	Q10412-01
F	1	R18229-02
G	6	K01907
H	1	Wiper
J	1	Seal
K	1	O-Ring
L	1	Seal Kit (Includes D, H, J & K)
M	1	N21812-G1
		Air Vent



AUTOMATIC/REMOTE LOCK
MOUNTING BRACKETS ONLY
ON REAR CYLINDER

NOTE:
WHEN ORDERING PLUNGER ASSY.,
SPECIFY SYMBOL NO. AND
BEARING CODE LETTER STAMPED
ON TOP OF PLUNGER.
FOR REPLACEMENT PLUNGER,
ORDER KIT NO. K92935

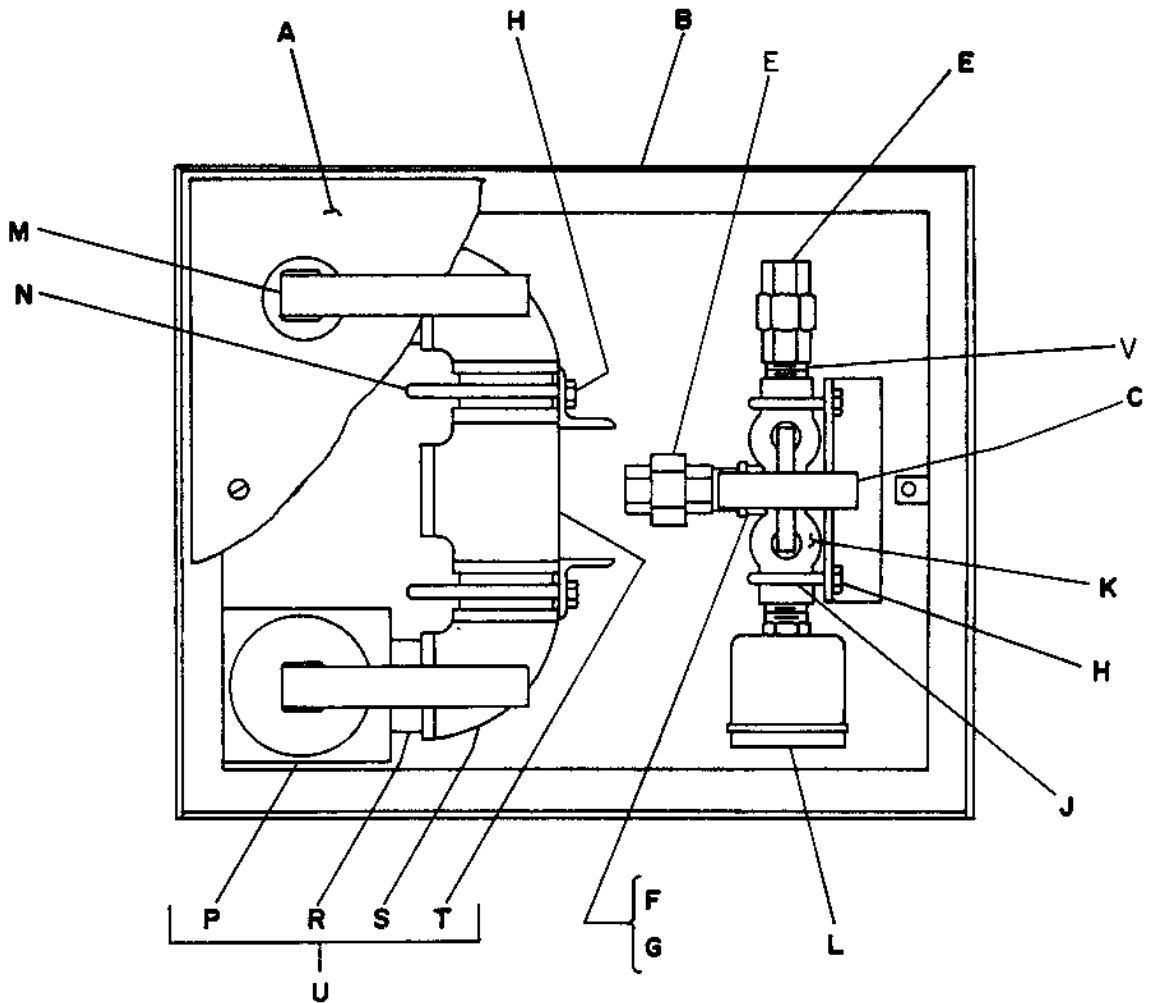
RI6287

PLUNGER AND CYLINDER ASSEMBLY (REAR)

PANZITTA SALES & SERVICE
72 George Avenue
Wilkes-Barre, PA 18705
570-822-6720 800-822-6720
www.panzittasales.com

When ordering replacement parts, always mention lift model number and serial number.

Code No. No. Req.	Symbol No.	Description	Code No. No. Req.	Symbol No.	Description		
A	1	R13352	Cover	L	1	K81439	Muffler
B	1	T09397	Control Box	M	2	N19602	Oil Control Handle Extension
C	1	N19184	Air Control Handle Extension	N	2	K58558	U-Bolt
E	2	K07798	Union 1/2"	P	2	R14467	Oil Valve (See Page 24, Fig. 2)
F	1	K44745	Nipple 1/2" x 1-1/2"	R	4	R11494-51	Nipple 1-1/4" x 1-5/8"
G	1	K07801	Elbow 1/2" x 90°	S	2	K47803	Elbow 1-1/4" x 90°
H	8	K01941	Hex Nut 1/4"-20	T	1	K02309A01	Tee STD 1-1/4"
J	2	K67996-02	U-Bolt	U	1	T09398	Oil Valve & Tee Assembly (Includes P, R, S, & T)
K	1	K85963-03	Air Valve (See Page 25, Fig. 1)	V	1	N16771	1/2" Close Nipple



RI3467

SEE PAGE 7 FOR CONTROL BOX LOCATION

PANZITTA SALES & SERVICE

72 George Avenue

Wilkes-Barre, PA 18705

570-822-6720 800-822-6720

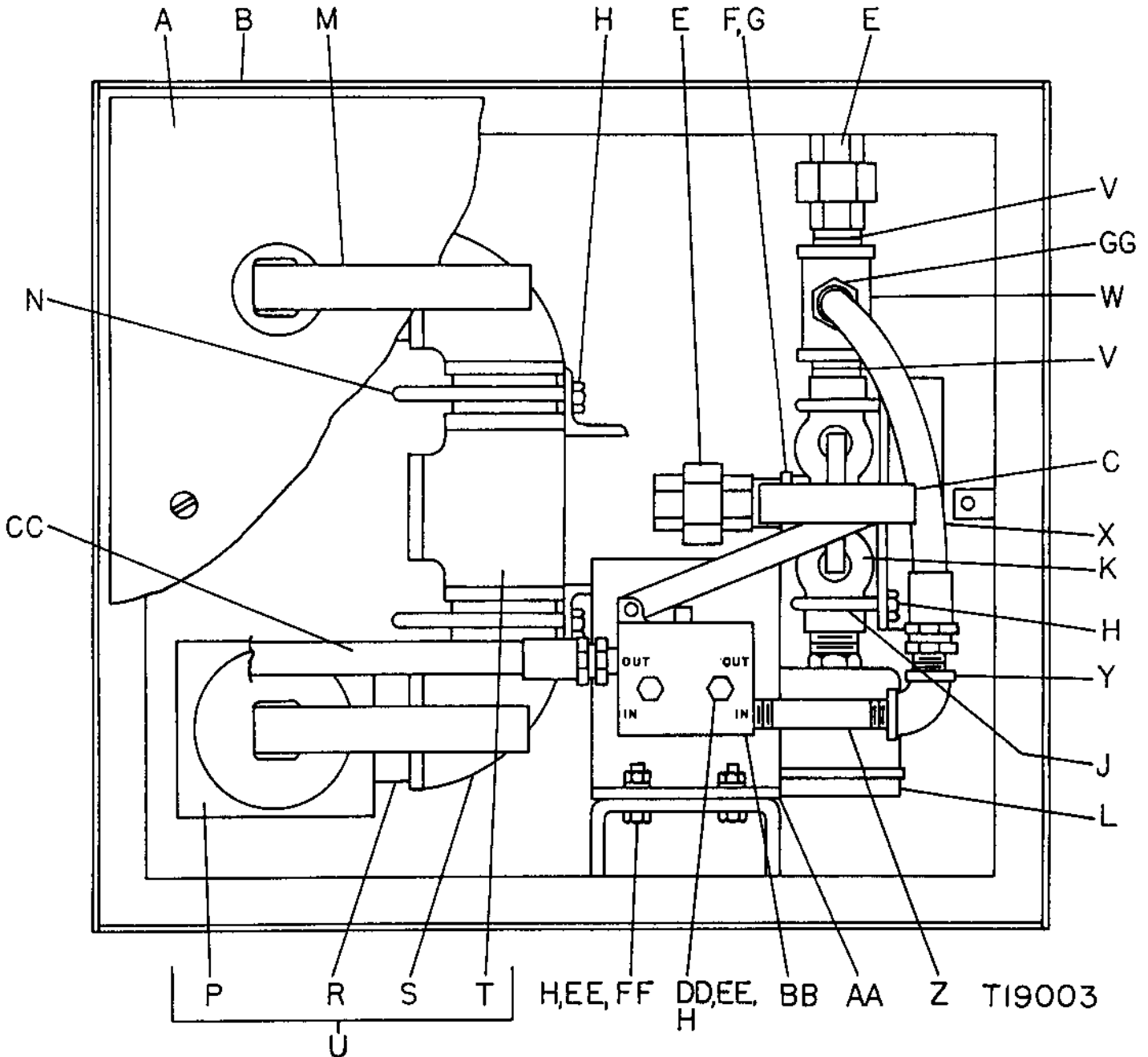
www.panzittasales.com

CONTROL BOX ASSEMBLY

When ordering replacement parts, always mention lift model number and serial number.

Code No.	No. Req.	Symbol No.	Description
A	1	R13352	Cover
B	1	T19012	Control Box
C	1	N19184	Air Control Handle Extension
E	2	K07798	Union 1/2"
F	1	K44745	Nipple 1/2" x 1-1/2"
G	1	K07801	Elbow 1/2" x 90°
H	12	K01941	Hex Nut 1/4"-20
J	2	K67996-02	U-Bolt
K	1	K85963-03	Air Valve (See Page 25, Fig. 1)
L	1	K81439	Muffler
M	2	N19602	Oil Control Handle Extension
N	2	K58558	U-Bolt
P	2	R14467	Oil Valve (See Page 24, Fig. 2)
R	4	R11494-51	Nipple 1-1/4" x 1-5/8"
S	2	K47803	Elbow 1-1/4" x 90°

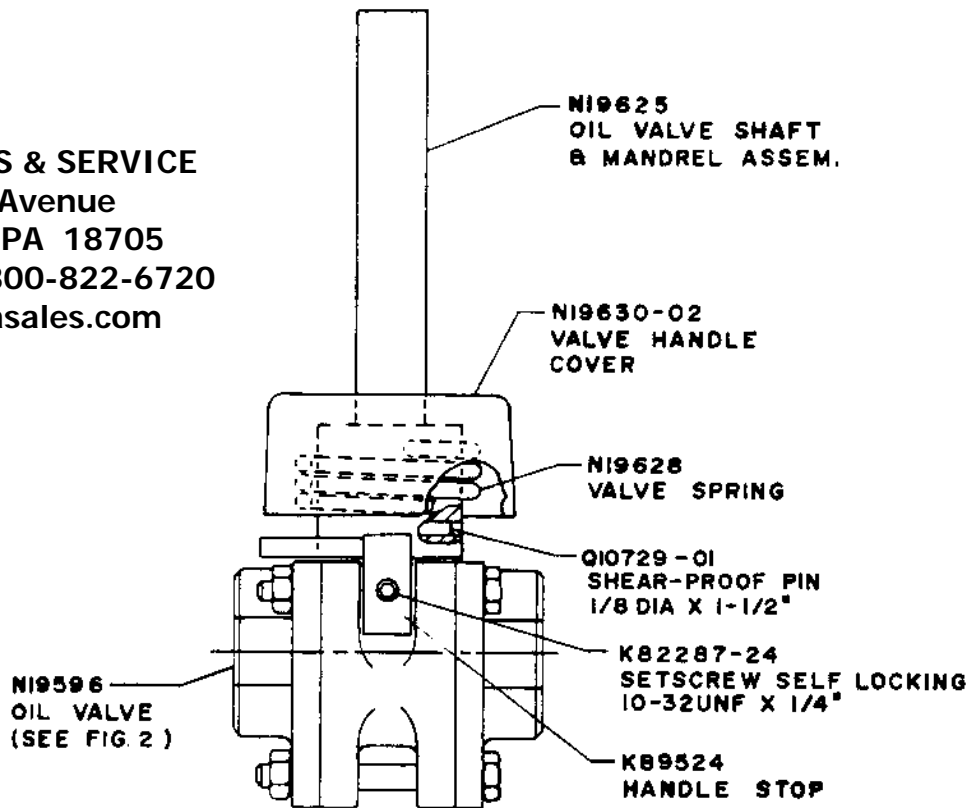
Code No.	No. Req.	Symbol No.	Description
T	1	K02309A01	Tee STD 1-1/4"
U	1	T09398	Oil Valve & Tee Assembly (Includes P, R, S, & T)
V	2	N16771	1/2" Close Nipple
W	1	K15078	1/2" Reducer Pipe Tee
X	1	K95008	Hose Assembly
Y	1	K03481	Elbow 1/4" x 90°
Z	1	K07823	Nipple 1/4" x 3"
AA	1	N23003	Bracket, Valve Mounting
BB	1	N23005	Air Valve Assembly
CC	1	K90150-02	Air Hose
DD	2	K01914-55	Hex Hd. Bolt 1/4"-20 x 2"
EE	4	K02204	1/4" Lockwasher
FF	2	K01900	Hex Hd. Bolt 1/4"-20 x 1"
GG	1	K74714	1/2" x 1/4" Red. Bushing



CONTROL BOX ASSEMBLY (OPTIONAL REMOTE CONTROL LOCK LEG)

When ordering replacement parts, always mention lift model number and serial number.

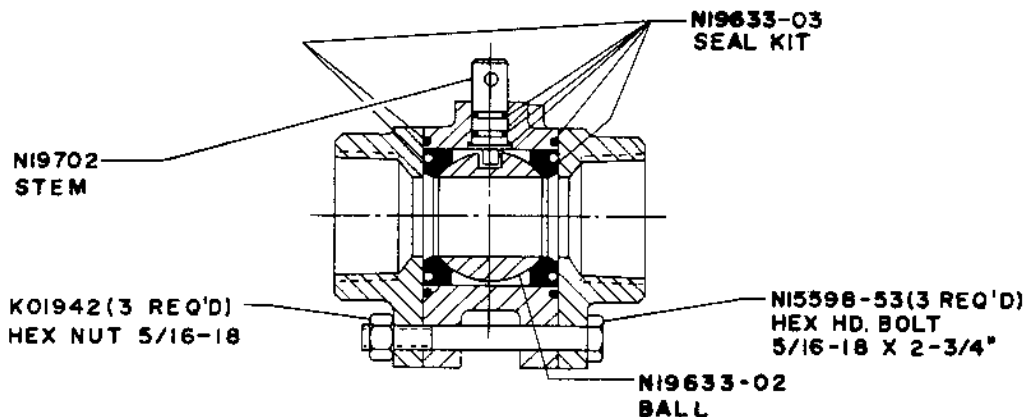
PANZITTA SALES & SERVICE
72 George Avenue
Wilkes-Barre, PA 18705
570-822-6720 800-822-6720
www.panzittasales.com



FLOOR CONTROL
COMPLETE OIL VALVE
ASSEMBLY R14467

FIG 1

NOTE: THE OIL VALVE REPAIR KIT K34124 IS TO CHANGE METHOD OF ASSEMBLING VALVE STEM & MANDREL FROM SETSCREW TO SHEAR-PROOF PIN. (NOTE: FOR VALVE STEMS & MANDRELS WHICH ARE ALREADY PINNED, ORDER INDIVIDUAL PARTS AS NEEDED).



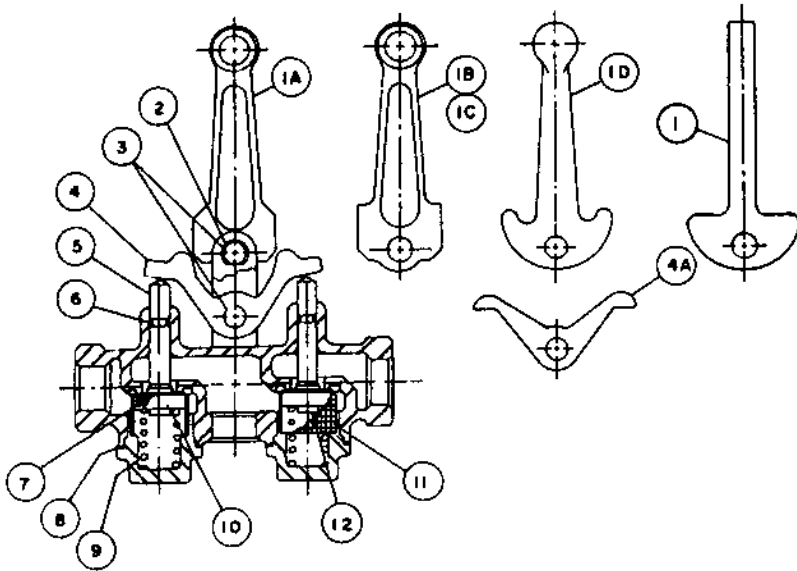
REPLACEMENT PARTS FOR OIL VALVE N19596

FIG. 2

N20339

OIL VALVE IN CONTROL BOX

When ordering replacement parts, always mention lift model number and serial number.



SYM. NO.	SYMBOL NO.		QTY	DESCRIPTION
	CONS. BRASS	KINGSTON		
1		N19106	1	LEVER, FLOOR CONTROL
1A	N19494-28		1	LEVER, LOCKING
1B	N19494-27		1	LEVER, NON-LOCKING
1C		K82714-20	1	LEVER, LOCKING
1D		K82714-35	1	LEVER, NON-LOCKING
2	N19494-32	N19494-32	4	RETAINING RING
3	N19494-30	N19494-30	2	CLEVIS PIN
4	N19494-29		1	ROCKER ARM
4A		K82714-23	1	ROCKER ARM
5	N19494-26	K82714-28	2	STEM
6	N19494-21	K82714-27	2	"O" RING
7	N19494-22	K82714-29	2	SEAT WASHER
8	N19494-23		2	FIBER WASHER
9	N19494-20	K82714-32	2	SPRING
10	N19494-25	K82714-30	2	SEAT HOLDER
11	N19494-31		2	SCREEN
12		K82714-31	2	STEM NUT

FIG. 1

TO ORDER A COMPLETE VALVE ASSEMBLY, THE PART NUMBERS ARE:

LOCKING TYPE (FULL HYDRAULIC WALL CONTROL) - K68832

DEADMAN TYPE (SEMI-HYDRAULIC WALL CONTROL) - K85963 & K85963-02

DEADMAN TYPE (ALL FLOOR CONTROL) - K85963-03

FOR AIR VALVE REPLACEMENT PARTS, FIRST DETERMINE MFR. OF VALVE:

IF MFR. IS KINGSTON, USE PARTS LIST ABOVE (FIG. 1)

IF MFR. IS CONSOLIDATED BRASS AND VALVE HAS A ONE-PIECE CAST HANDLE, USE PARTS LIST ABOVE (FIG. 1)

IF MFR. IS CONSOLIDATED BRASS AND VALVE HAS A TWO-PIECE HANDLE WITH A PLASTIC KNOB, USE PARTS LIST BELOW (FIG. 2)

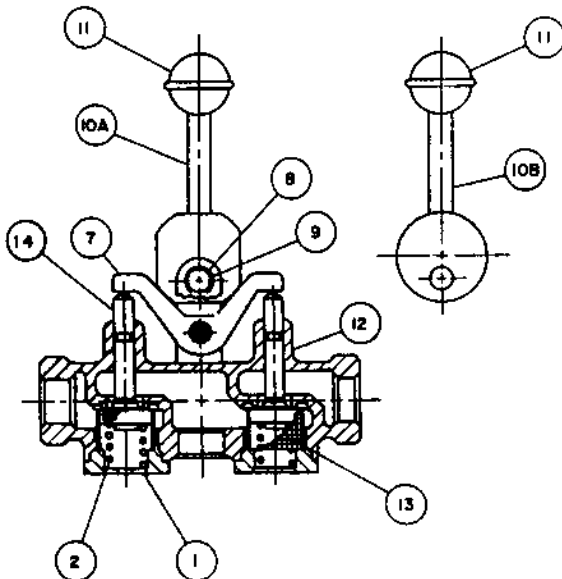
PANZITTA SALES & SERVICE

72 George Avenue

Wilkes-Barre, PA 18705

570-822-6720 800-822-6720

www.panzittasales.com



SYM. NO.	SYMBOL NO.		QTY	DESCRIPTION
	CONS. BRASS			
1	N20389-01		2	CAP
2	N20389-02		2	SPRING
7	N20389-07		1	ROCKER
8	N20389-08		2	CLEVIS PIN
9	N20389-09		4	RETAINING RING
10A	N20389-10		1	LEVER, LOCKING
10B	N20389-11		1	LEVER, NON-LOCKING
11	N20389-12		1	KNOB
12	N20389-13		1	BODY
13	N20389-14		2	SCREEN
14	N20389-15		2	STEM ASSEMBLY

FIG. 2

R14580

AIR VALVE

A-2BM3A

A-2BM3A.max