

PANZITTA SALES & SERVICE  
72 George Avenue  
Wilkes-Barre, PA 18705  
570-822-6720 800-822-6720  
[www.panzittasales.com](http://www.panzittasales.com)



**PARTS LIST**  
**FOR**  
**FORE & AFT**

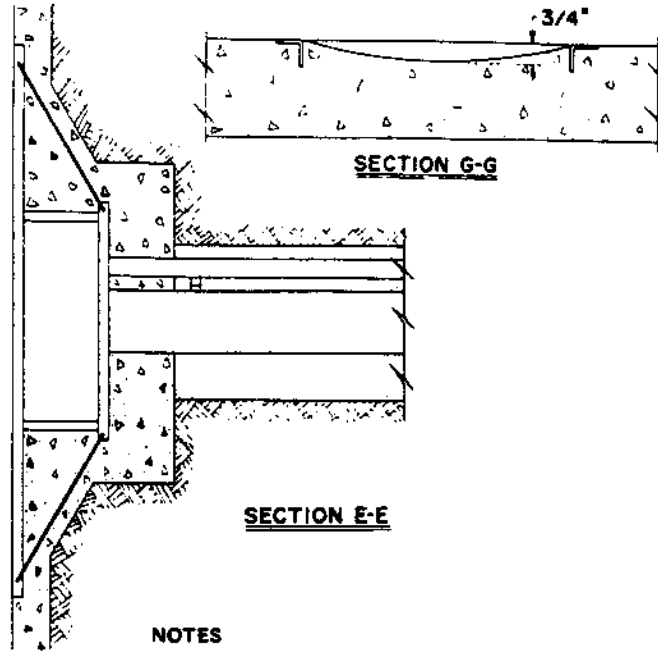
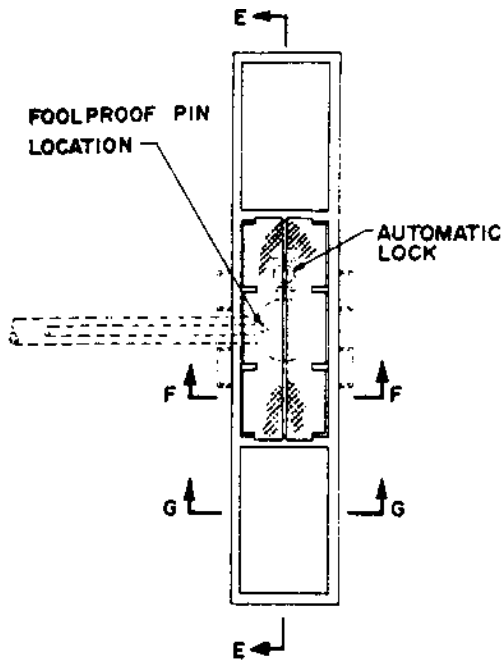
**ADJUSTABLE CAR LIFT**

**A-12M3A**

**13,000 LBS CAPACITY**

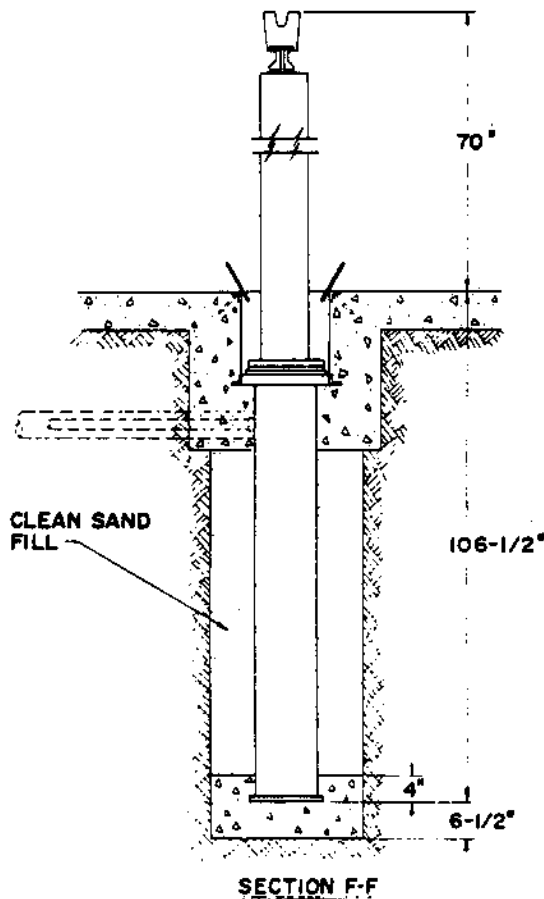
**6,500 LBS PER PLUNGER**

A-12M3A.max



**NOTES**

1. TRENCH WALL CONSTRUCTION MAY BE CONCRETE BLOCK 8" THICK.
2. THIS PIPE LENGTH WILL CHANGE WHEN INSTALLING OTHER THAN STANDARD WHEEL BASE LIFT.
3. TO DETERMINE PIPE LENGTH FOR PIPE "Y" FIND PIPE LENGTH THAT CORRESPONDS WITH TRACK LENGTH BEING INSTALLED.



**PIPE SCHEDULE**

Code No.	Symbol No.	Description
A	K21704	Street Elbow 1/2" x 90°
B	K47803	Elbow 1-1/4" x 90°
C	K02321-20	Street Elbow 1" x 90°
D	K62381	Street Elbow 1-1/4" x 90°
E	K02340-21	Reducing Elbow 1-1/4" to 1"
F	K02312	Elbow 1" x 90°
G	K42804	Coupling 1/2"
H	R11531-30	Pipe 1" x 64"
J	R11495-22	Pipe 1" x 4-1/2"
K	K12176	Union 1-1/4"
M	N16771-48	Pipe 1/2" x 22-9/16"
N	N16771-72	Pipe 1/2" x 45-1/2"
P	R11531-42	Pipe 1" x 86" (See Note 2)
Q	R11494-54	Pipe 1-1/4" x 4"
R	K44809	Pipe 1-1/4" x 6"
S	R11494-30	Pipe 1-1/4" x 7"
T	K02421	Pipe 1-1/4" x 8-1/2"
U	R11532-46	Pipe 1-1/4" x 77-9/16"
V	R11532-68	Pipe 1-1/4" x 50"
W	R11532-85	Pipe 1-1/4" x 54"
Y	R11531-38	Pipe 1-1/4" x 109-1/2" - 10 Ft.
Y	R11531-39	Pipe 1-1/4" x 133-1/2" - 12 Ft.
Y	R11531-40	Pipe 1-1/4" x 157-1/2" - 14 Ft.
Y	R11531-41	Pipe 1-1/4" x 181-1/2" - 16 Ft.
AA	N19506-08	Conduit Pipe
BB	N19687	Oil Gauge Assembly
CC	K90640-01	Flexible Hose
DD	R13477-01	Oil Tank (R.H.)
EE	R13477-02	Oil Tank Assy (R.H.) (Includes BB&DD)
FF	K86957	Float Assembly

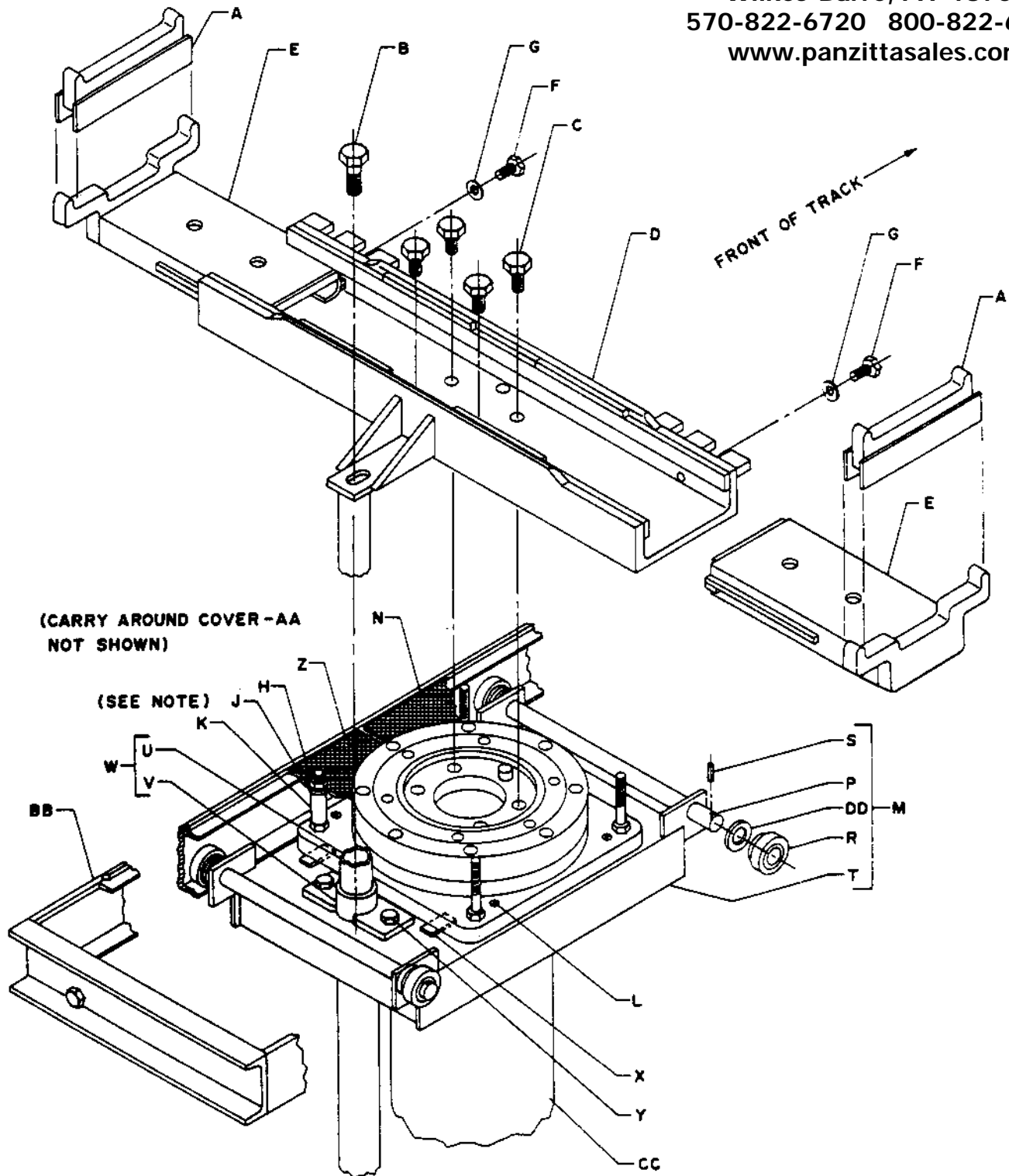
Track Length See Note 3

**PANZITTA SALES & SERVICE**  
 72 George Avenue  
 Wilkes-Barre, PA 18705  
 570-822-6720 800-822-6720  
 www.panzittasales.com

A-12M3A.max

# FORWARD PICKUP BASE AND CARRIAGE ASSEMBLY WITH STANDARD CONTROL BOX

PANZITTA SALES & SERVICE  
72 George Avenue  
Wilkes-Barre, PA 18705  
570-822-6720 800-822-6720  
www.panzittasales.com



NOTE — WASHER MUST NOT CONTACT COVER  
PLATES OR CARRIAGE WILL NOT MOVE

**PANZITTA SALES & SERVICE**  
**72 George Avenue**  
**Wilkes-Barre, PA 18705**  
**570-822-6720 800-822-6720**  
**www.panzittasales.com**

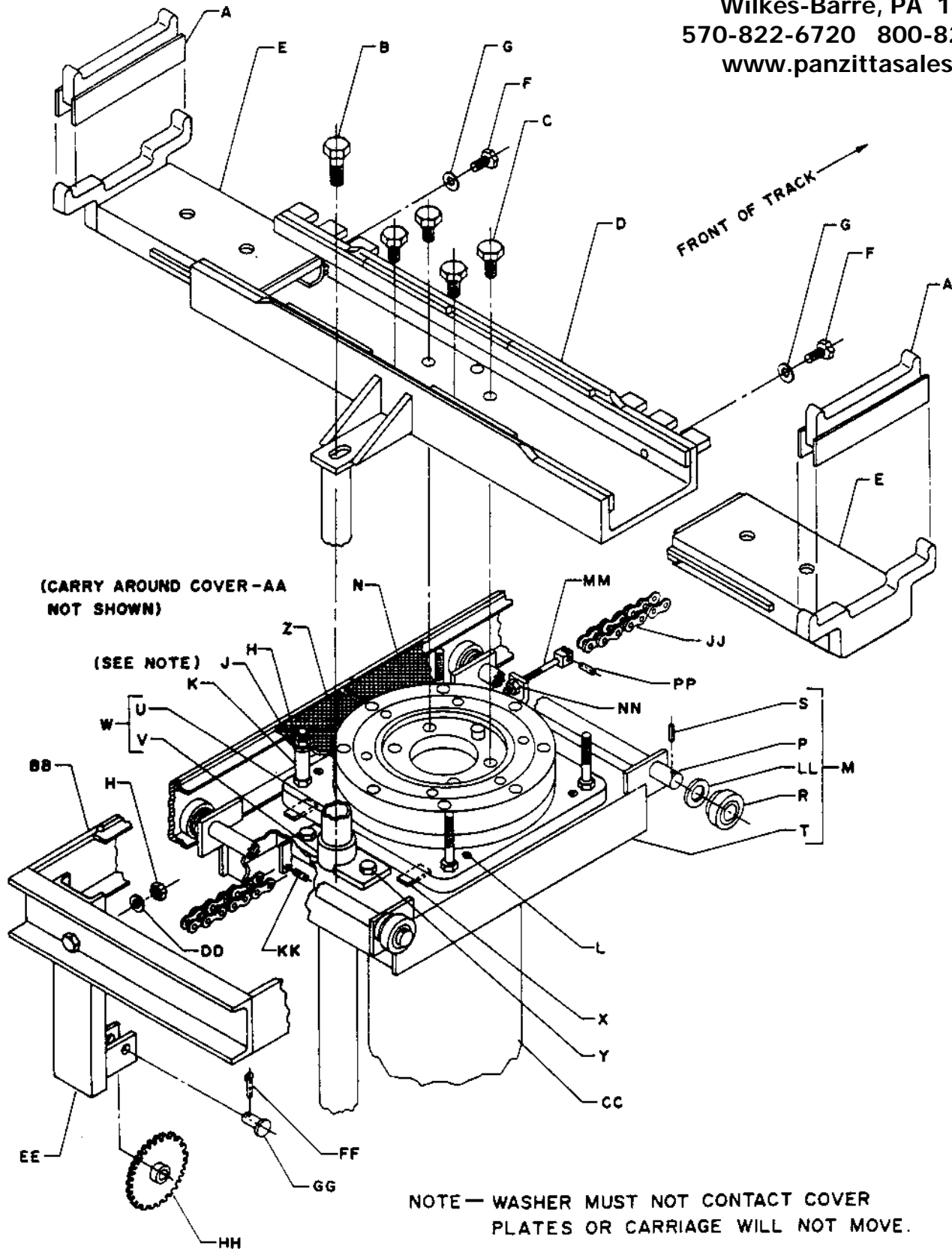
**FORWARD PICKUP BASE AND CARRIAGE ASSEMBLY  
WITH STANDARD CONTROL BOX PARTS LIST**

Code	No. Req.	Symbol No.	Description
A	2	R13424	Height Adapter
B	1	K01914-50	Hex Hd. Bolt 1" -8 x 2-1/2"
C	4	Q10412-01	Hex Hd. Bolt 3/4" -10 x 2-1/4"
D	1	T13930-02	Forward Pickup Base
E	2	R13418	Forward Pickup Slide
F	2	K01902	Hex Hd. Bolt 3/8" -16 x 1"
G	2	K50775	Lockwasher 3/8"
H	8	K01945	Hex Nut 1/2" -13
J	4	K02208	Washer 1/2"
K	4	K88531-01	Spacer
L	4	K06083-35	Set Screw 1/2" -13 x 1"
M	1	T13924	Carriage Assembly (Includes P,R,S & T)
N	1	R14469-01	Front Trench Cover Assembly
P	2	K88533	Axle Carriage
R	4	K88995	Carriage Wheel Assembly
S	4	K67240	Groove Pin 3/16" Dia. x 1-1/2"
T	1	T13923	Carriage Weldment
U	1	R13470-07	Telescoping Post & Latch Assembly
V	1	N20234-01	Stationary Tube Assembly
W	1	K88961-01	Automatic Lock Assembly (Includes B,U & V)
X	16	K88438	Shim
Y	2	K01909	Hex Hd. Bolt 1/2" -13 X 1"
Z	1	R13415-04	Front Trench Cover Assembly
AA	2	R13355	Trench Cover (10 Ft.)
AA	3	R13355	Trench Cover (12 Ft.)
AA	4	R13355	Trench Cover (14 Ft.)
AA	5	R13355	Trench Cover (16 Ft.)
BB	1	T13918-01	Track Assembly (10 Ft.)
BB	1	T13918-02	Track Assembly (12 Ft.)
BB	1	T13918-03	Track Assembly (14 Ft.)
BB	1	T13918-04	Track Assembly (16 Ft.)
CC	1	T13922-01	Plunger & Cylinder Assembly (Front) (See Page 17)
DD	4	K88459	Washer

A-12M3A.max

# FORWARD PICKUP BASE AND CARRIAGE ASSEMBLY WITH EXTENDED CONTROL BOX (OPTIONAL)

PANZITTA SALES & SERVICE  
72 George Avenue  
Wilkes-Barre, PA 18705  
570-822-6720 800-822-6720  
www.panzittasales.com



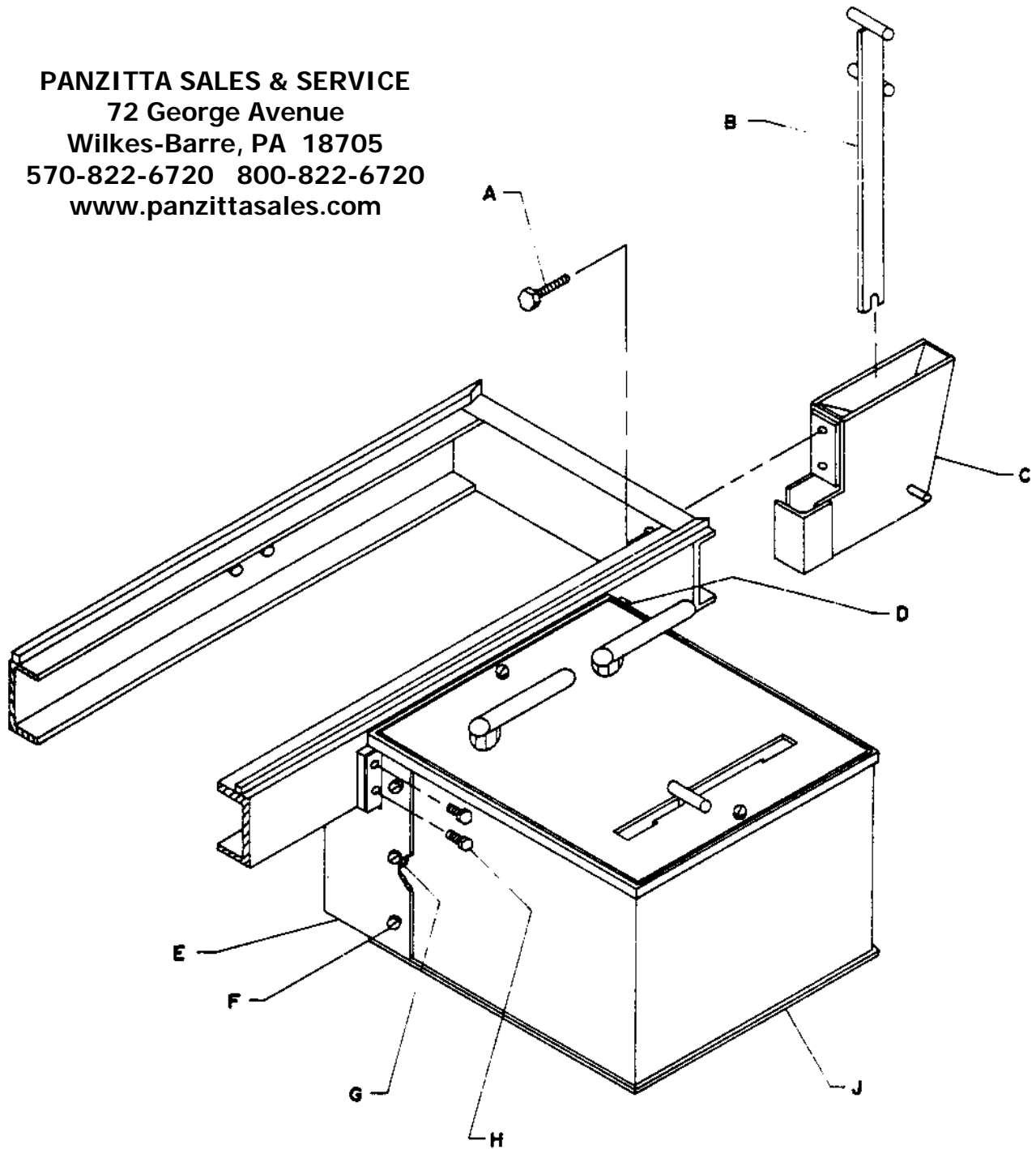
**PANZITTA SALES & SERVICE**  
**72 George Avenue**  
**Wilkes-Barre, PA 18705**  
**570-822-6720 800-822-6720**  
**www.panzittasales.com**

**FORWARD PICKUP BASE AND CARRIAGE ASSEMBLY WITH EXTENDED CONTROL BOX PARTS LIST (OPTIONAL)**

Code	No. Req.	Symbol No.	Description
A	2	R13424	Height Adapter
B	1	K01914-50	Hex Hd. Bolt 1" -8 x 2-1/2"
C	4	Q10412-01	Hex Hd. Bolt 3/4" -10 x 2-1/4"
D	1	T13930-02	Forward Pickup Base
E	2	R13418	Forward Pickup Slide
F	2	K01902	Hex Hd. Bolt 3/8" -16 x 1"
G	2	K50775	Lockwasher 3/8"
H	10	K01945	Hex Nut 1/2" -13
J	4	K02208	Washer 1/2"
K	4	K88531-01	Spacer
L	4	K06083-35	Set Screw 1/2" -13 x 1"
M	1	T13924	Carriage Assembly (Included P,R,S&T)
N	1	R13415-03	Front trench cover assembly
P	2	K88533	Axle Carriage
R	4	K88995	Carriage wheel assembly
S	4	K67240	Groove Pin 3/16" Dia. x 1-1/2"
T	1	T13923	Carriage Weldment
U	1	R13470-07	Telescoping post & latch assembly
V	1	N20234-01	Stationary Tube Assembly
W	1	K88961-01	Automatic Lock Assembly (Includes B,U&V)
X	16	K88438	Shim
Y	2	K01909	Hex Hd. Bolt 1/2" -13 x 1"
Z	1	R13415-04	Front trench cover assembly
AA	2	R13179	Trench Cover (10 Ft.)
AA	3	R13179	Trench Cover (12 Ft.)
AA	4	R13179	Trench Cover (14 Ft.)
AA	5	R13179	Trench Cover (16 Ft.)
BB	1	T13918-01	Track Assembly (10 Ft.)
BB	1	T13918-02	Track Assembly (12 Ft.)
BB	1	T13918-03	Track Assembly (14 Ft.)
BB	1	T13918-04	Track Assembly (16 Ft.)
CC	1	T13922-01	Plunger & Cylinder Assembly (Front) {See Page 17}
DD	2	K02455	Lockwasher 1/2"
EE	1	N21712-01	Sprocket Support
FF	1	K02128	Cotter Pin 1/8" x 1"
GG	1	Q10167-13	Clevis Pin 5/8" Dia. x 1-3/4"
HH	1	K90624	Sprocket
JJ	1	K89040-17	Chain (10 Ft.)
JJ	1	K89040-18	Chain (12 Ft.)
JJ	1	K89040-19	Chain (14 Ft.)
JJ	1	K89040-20	Chain (16 Ft.)
KK	1	K78378-39	Roll Pin 3/16 Dia. x 1-3/8"
LL	4	K89459	Washer
MM	1	K90604	Anchor Rod Assembly
NN	1	Q10977-03	Locknut 5/16" -18
PP	1	K78378-48	Roll Pin 5/32" Dia. x 3/4"

# STANDARD CONTROL BOX AND RATCHET CUP

PANZITTA SALES & SERVICE  
 72 George Avenue  
 Wilkes-Barre, PA 18705  
 570-822-6720 800-822-6720  
 www.panzittasales.com



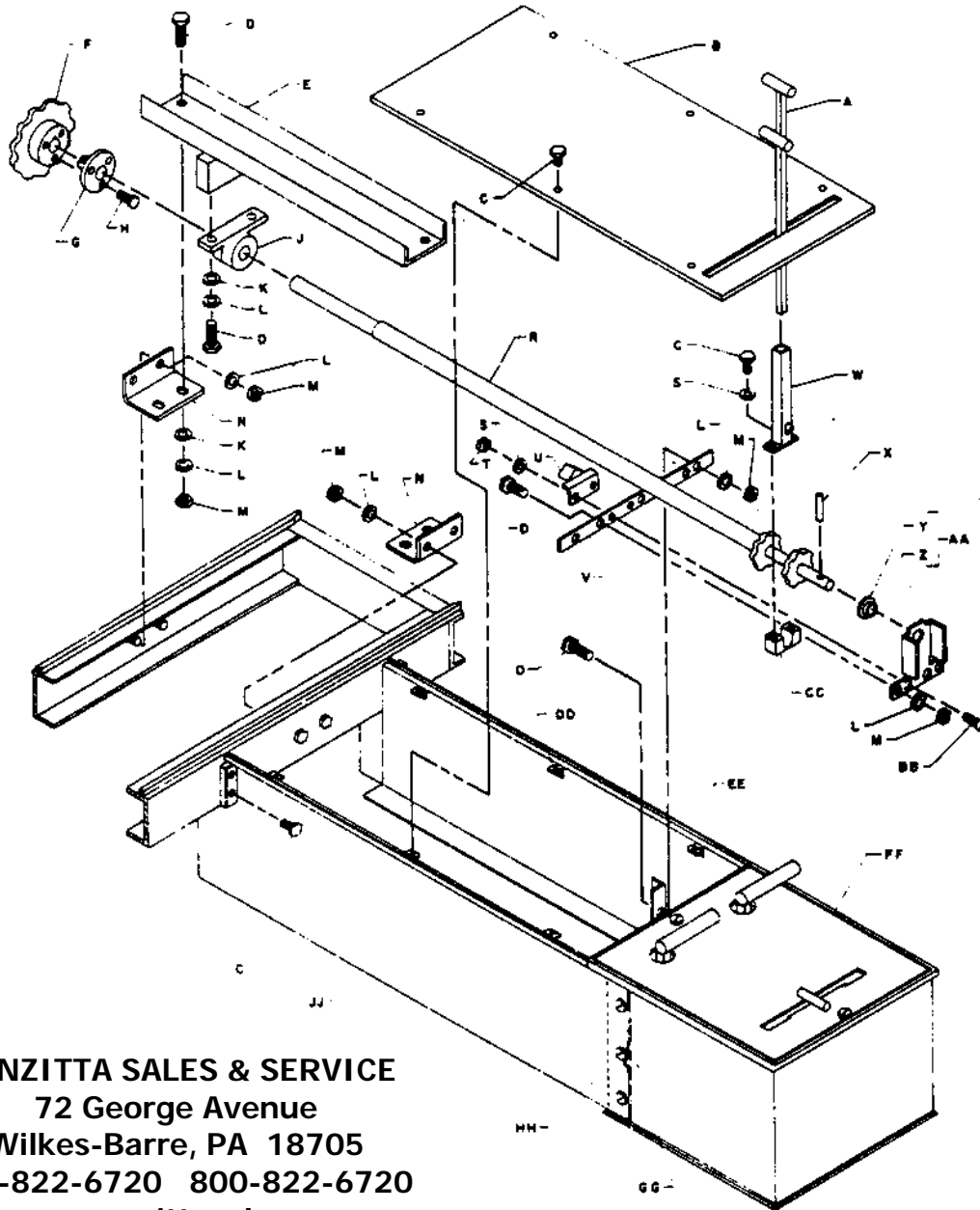
T11879

Fig. 7

Code	No. Req.	Symbol No.	Description
A	2	K03782	Hex Hd. Bolt 5/16"-18 x 1-3/4"
B	1	N20309	Lever Assembly
C	1	R14470	Ratchet Cup
D	1	R13489-01	Mounting Bracket (R. H.)
E	1	R13489-02	Mounting Bracket (L. H.)
F	6	K60521-24	Self Tapping Screw #14 x 5/8"
G	6	K66871	Flat Washer
H	4	K05287	Hex Hd. Bolt 1/4"-20 x 1/2"
J	1	T09396	Control box assembly (See Page 18)

**IMPORTANT:** Specify Model and Serial Number of Lift. Also Symbol Number and Name of Part.

# EXTENDED CONTROL BOX (OPTIONAL)



**PANZITTA SALES & SERVICE**  
 72 George Avenue  
 Wilkes-Barre, PA 18705  
 570-822-6720 800-822-6720  
 www.panzittasales.com

T13969

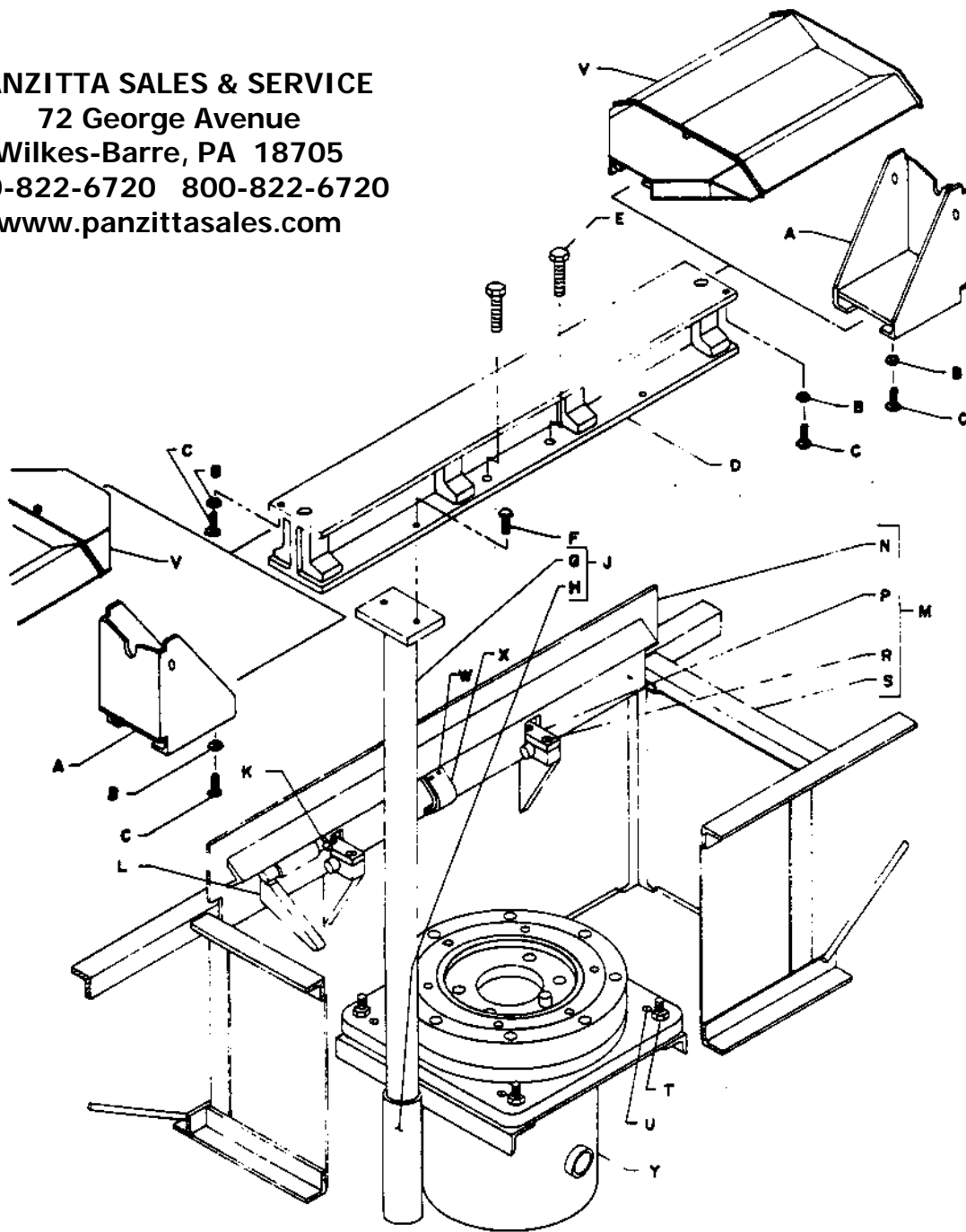
Fig. 8

Code No.	No. Req.	Symbol No.	Description	Code No.	No. Req.	Symbol No.	Description
A	1	R16171-01	Ratchet Handle	U	1	K90607	Stop Weldment
B	1	T13872-01	Extension Box Cover	V	1	N21460	Ratchet Support Bar
C	12	K05287	Hex Hd. Bolt 1/4" -20 x 1/2"	W	1	N21714	Handle Holder Assembly
D	10	K01902	Hex Hd. Bolt 3/8" -16 x 1"	X	1	K78378-39	Roll Pin 3/16" Dia. x 1-3/8"
E	1	N21456-01	Bearing Mounting Bracket	Y	1	N17706-40	Flanged Bearing
F	1	K90615	Sprocket	Z	1	N21474	Ratchet Support Weldment
G	1	K90616	Split Taper Bushing	AA	1	N21470	Ratchet Support Assembly (Includes Y & Z)
H	3	K07565	Hex Hd. Bolt 5/16" -18 x 1"	BB	2	Q10033-69	Socket Hd. Cap Screw 1/4" -20 x 3/4"
J	1	K90618	Pillow Block	CC	1	K90609	Pivot Block
K	6	K02206	Flat Washer 3/8"	DD	6	K81038-24	Speed Nut 1/4" -20
L	14	K50775	Lockwasher 3/8"	EE	1	T09499-05	Side Panel Weldment (R.H.)
M	12	K01943	Hex Nut 3/8" -16	FF	1	T09396	Control Box Assembly (See Page 18)
N	2	N21769	Support Bracket	GG	6	K66871	Flat Washer
R	1	N21717-02	Sprocket Shaft Assembly	HH	6	K60521-24	Self Tapping Screw #14 x 5/8"
S	4	K43948	Lockwasher 1/4"	JJ	1	T09499-06	Side Panel Weldment (L.H.)
T	2	K01941	Hex Nut 1/4" -20				

**IMPORTANT:** Specify Model and Serial Number of Lift. Also Symbol Number and Name of Part.

# REAR BOX AND AXLE SUPPORT

PANZITTA SALES & SERVICE  
 72 George Avenue  
 Wilkes-Barre, PA 18705  
 570-822-6720 800-822-6720  
 www.panzittasales.com



R16282

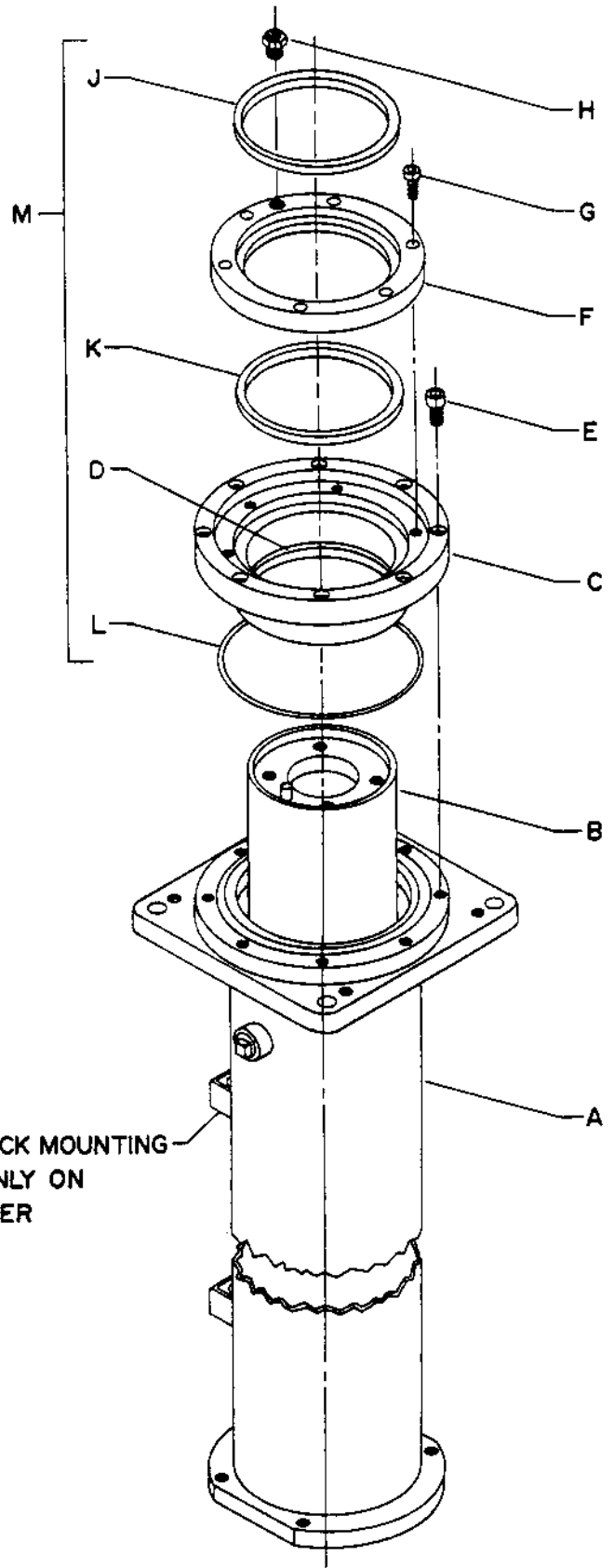
Fig. 9

Code	No. Req.	Symbol No.	Description	Code	No. Req.	Symbol No.	Description
A	2	R13177	Axle Support	M	1	T13917	Rear Box & Door Assembly (includes N, P, R & S)
B	6	K01943	Hex Nut 3/8"-16	N	2	R16249	Trench Box Cover Assembly (includes W & X)
C	6	K01902	Hex Hd. Bolt 3/8"-16 x 1"	P	4	K88461	Hinge Door Top Member
D	1	T13929	Axle Support Beam	R	8	Q10098-48	Flat Hd. Socket Screw 3/8"-16 x 3/4"
E	4	Q10412-01	Hex Hd. Bolt 3/4"-10 x 2-1/4"	S	1	T13927	Rear Cylinder Trench Box Weldment
F	2	K01909	Hex Hd. Bolt 1/2"-13 x 1"	T	4	K01945	Hex Nut 1/2"-13
G	1	R13471-01	Telescoping Post & Latch Assembly	U	4	K06083-35	Set Screw 1/2"-13 x 1"
H	1	R16245-01	Stationary tube assembly	V	2	T09478	Rear Wheel Adapter Assembly (optional)
J	1	K88955-01	Automatic Lock Assembly (includes G & H)	W	4	Q10150-03	Self Tapping Screw #8-32 x 3/8"
K	2	K78378-48	Roll Pin 5/32" Dia. x 3/4"	X	1	K86779-01	Wear Strip
L	2	K88445-01	Door Closer	Y	1	T13922-02	Plunger & Cylinder Assembly (Rear) (See Page 17)

**IMPORTANT:** Specify Model and Serial Number of Lift. Also Symbol Number and Name of Part.

# PLUNGER AND CYLINDER ASSEMBLY

Code No.	No. Req.	Symbol No.	Description
	1	T13922-01	Plunger & Cylinder Assy. (Front)
	1	T13922-02	Plunger & Cylinder Assy. (Rear)
A	1	T13919-G1	Cylinder Assembly (Front)
A	1	T13919-G2	Cylinder Assembly (Rear)
B	1	T13912-G2	Plunger Assembly (Front)
B	1	T13912-G3	Plunger Assembly (Rear)
C	2	T13911-02	Upper Bearing
D	2	K93210-02	Felt Wiper
E	16	Q10034-82	Soc. Hd. Bolt 1/2" -13 x 2"
F	2	T13915-01	Wiper Retainer
G	12	Q10034-28	Soc. Hd. Bolt 3/8" -16 x 3/4"
H	2	N21812-G1	Air Vent
J	2	K93211	Wiper
K	2	K92328	Seal
L	2	Q10069-30	O-Ring
M	2	K34152	Seal Kit (Includes D,J,K&L)



**PANZITTA SALES & SERVICE**  
 72 George Avenue  
 Wilkes-Barre, PA 18705  
 570-822-6720 800-822-6720  
 www.panzittasales.com

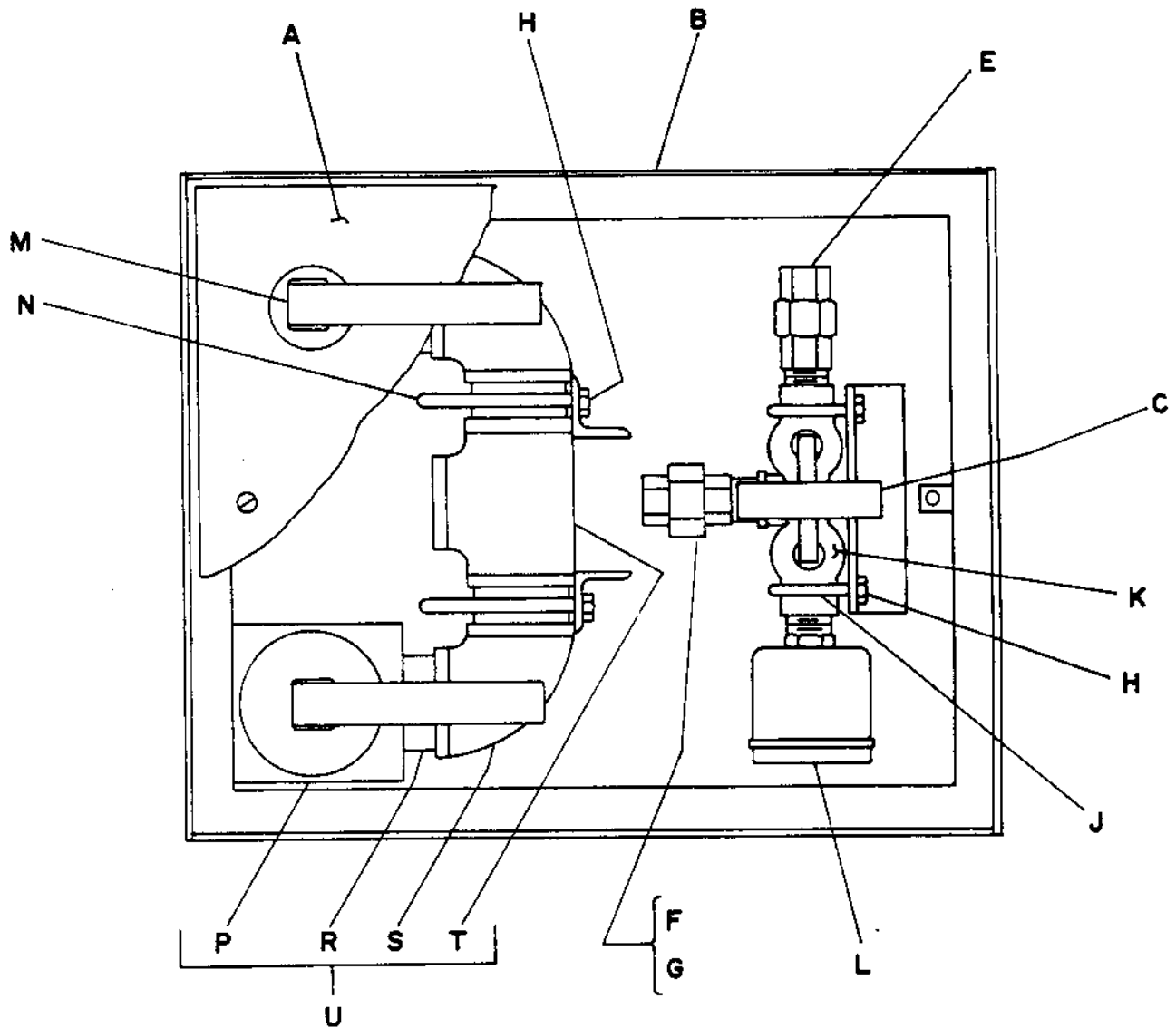
AUTOMATIC LOCK MOUNTING  
 BRACKETS ONLY ON  
 REAR CYLINDER

\*WHEN ORDERING PLUNGER ASSY.  
 SPECIFY SYMBOL NO. AND CODE  
 LETTER STAMPED ON TOP OF  
 PLUNGER.

R16283

**IMPORTANT:** Specify Model and Serial Number of Lift. Also Symbol Number and Name of Part.

# CONTROL BOX ASSEMBLY



**SEE PAGES 13 OR 14 FOR CONTROL BOX LOCATION**

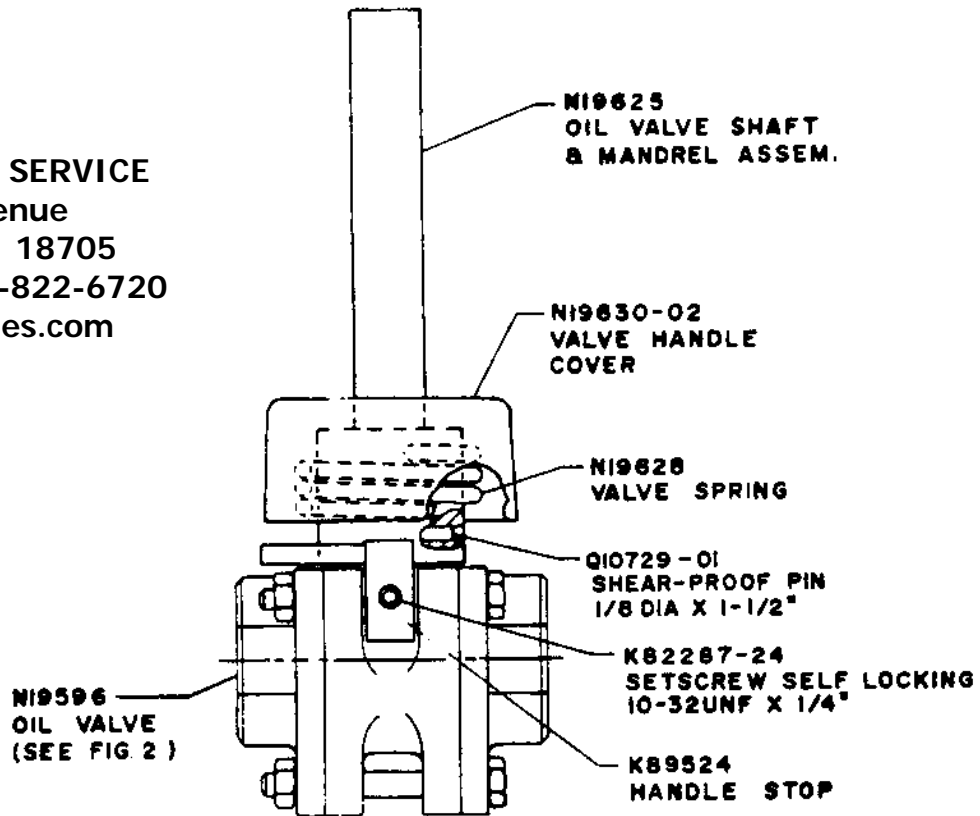
R13467

Code No.	No. Req.	Symbol No.	Description
A	1	R13352	Cover
B	1	T09397	Control Box
C	1	N19184	Air Control Handle Extension
E	1	K62835	Male-Female Union
F	1	K44745	Nipple 1/2" x 1-1/2"
G	1	K07801	Elbow 1/2" x 90°
H	8	K01941	Hex Nut 1/4"-20
J	2	K67996-02	U-Bolt
K	1	K85963-03	Air Valve (See Page 20, Fig. 1)

Code No.	No. Req.	Symbol No.	Description
L	1	K81439	Muffler
M	2	N19602	Oil Control Handle Extension
N	2	K13758	U-Bolt
P	2	R14467	Oil Valve (See Page 19, Fig. 2)
R	4	R11494-51	Nipple 1-1/4" x 1-5/8"
S	2	K47803	Elbow 1-1/4" x 90°
T	1	K02309A01	Tee Std 1-1/4"
U	1	T09398	Oil Valve & Tee Assembly (Includes P, R, S & T)

# OIL VALVE

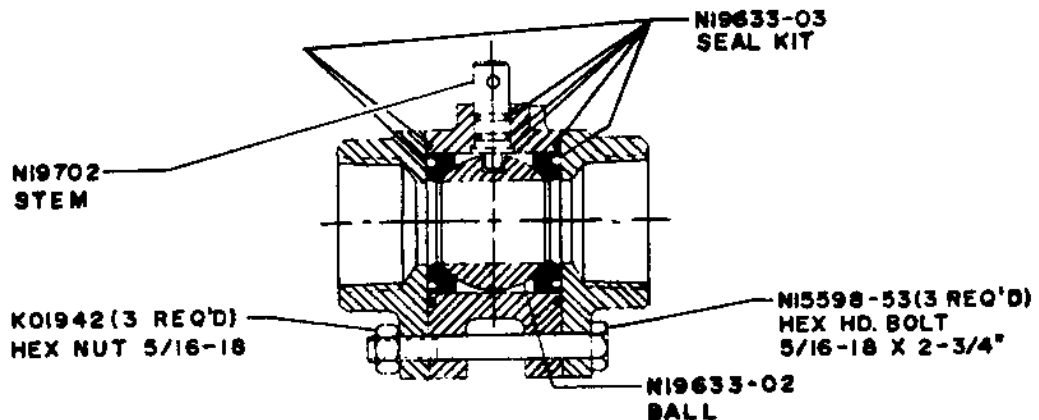
PANZITTA SALES & SERVICE  
 72 George Avenue  
 Wilkes-Barre, PA 18705  
 570-822-6720 800-822-6720  
 www.panzittasales.com



FLOOR CONTROL  
 COMPLETE OIL VALVE  
 ASSEMBLY R14467

FIG 1

**NOTE:** THE OIL VALVE REPAIR KIT K34124 IS TO CHANGE METHOD OF ASSEMBLING VALVE STEM & MANDREL FROM SETSCREW TO SHEAR-PROOF PIN. (NOTE: FOR VALVE STEMS & MANDRELS WHICH ARE ALREADY PINNED, ORDER INDIVIDUAL PARTS AS NEEDED).



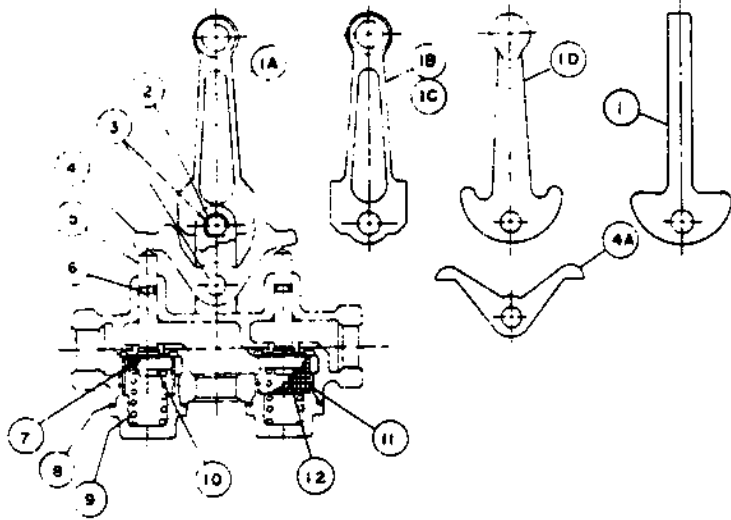
REPLACEMENT PARTS FOR OIL VALVE N19596

FIG 2

N20339

**IMPORTANT:** Specify Model and Serial Number of Lift. Also Symbol Number and Name of Part.

# AIR VALVE



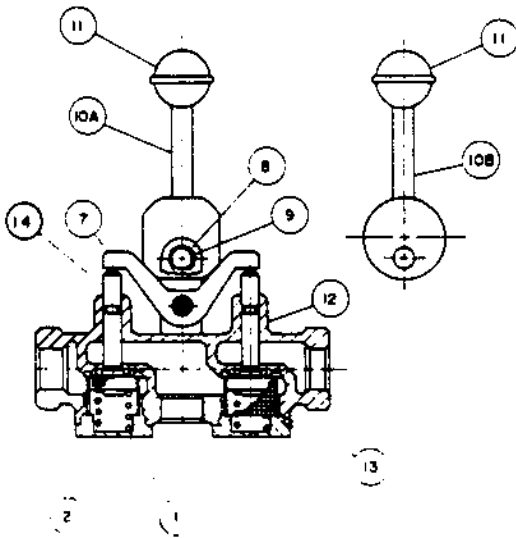
SYMBOL	NO	QTY	DESCRIPTION
CONS. BRASS	KINGSTON		
	N19106	1	LEVER, FLOOR CONTROL
1A	N19494-28	1	LEVER, LOCKING
1B	N19494-27	1	LEVER, NON-LOCKING
1C	KB2714-20	1	LEVER, LOCKING
1D	KB2714-35	1	LEVER, NON-LOCKING
2	N19494-32	4	RETAINING RING
3	N19494-30	2	CLEVIS PIN
4	N19494-29	1	ROCKER ARM
4A	KB2714-23	1	ROCKER ARM
5	N19494-26	2	STEM
6	N19494-21	2	O RING
7	N19494-22	2	SEAT WASHER
8	N19494-23	2	FIBER WASHER
9	N19494-20	2	SPRING
10	N19494-25	2	SEAT HOLDER
11	N19494-31	2	SCREEN
12	KB2714-31	2	STEM NUT

FIG. 1

**PANZITTA SALES & SERVICE**  
 72 George Avenue  
 Wilkes-Barre, PA 18705  
 570-822-6720 800-822-6720  
 www.panzittasales.com

TO ORDER A COMPLETE VALVE ASSEMBLY, THE PART NUMBERS ARE:  
 LOCKING TYPE (FULL HYDRAULIC WALL CONTROL) - K68832  
 DEADMAN TYPE (SEMI-HYDRAULIC WALL CONTROL) - K85963 & K85963-02  
 DEADMAN TYPE (ALL FLOOR CONTROL) - K85963-03

FOR AIR VALVE REPLACEMENT PARTS, FIRST DETERMINE MFR OF VALVE:  
 IF MFR. IS KINGSTON, USE PARTS LIST ABOVE (FIG. 1)  
 IF MFR. IS CONSOLIDATED BRASS AND VALVE HAS A ONE-PIECE CAST HANDLE,  
 USE PARTS LIST ABOVE (FIG. 1)  
 IF MFR. IS CONSOLIDATED BRASS AND VALVE HAS A TWO-PIECE HANDLE WITH  
 A PLASTIC KNOB, USE PARTS LIST BELOW (FIG. 2)



SYMBOL	NO	QTY	DESCRIPTION
CONS. BRASS			
1	N20389-01	2	CAP
2	N20389-02	2	SPRING
7	N20389-07	1	ROCKER
8	N20389-08	2	CLEVIS PIN
9	N20389-09	4	RETAINING RING
10A	N20389-10	1	LEVER, LOCKING
10B	N20389-11	1	LEVER, NON-LOCKING
11	N20389-12	1	KNOB
12	N20389-13	1	BODY
13	N20389-14	2	SCREEN
14	N20389-15	2	STEM ASSEMBLY

FIG. 2

R14580

**IMPORTANT:** Specify Model and Serial Number of Lift. Also Symbol Number and Name of Part.