

PANZITTA SALES & SERVICE  
72 George Avenue  
Wilkes-Barre, PA 18705  
570-822-6720 800-822-6720  
[www.panzittasales.com](http://www.panzittasales.com)

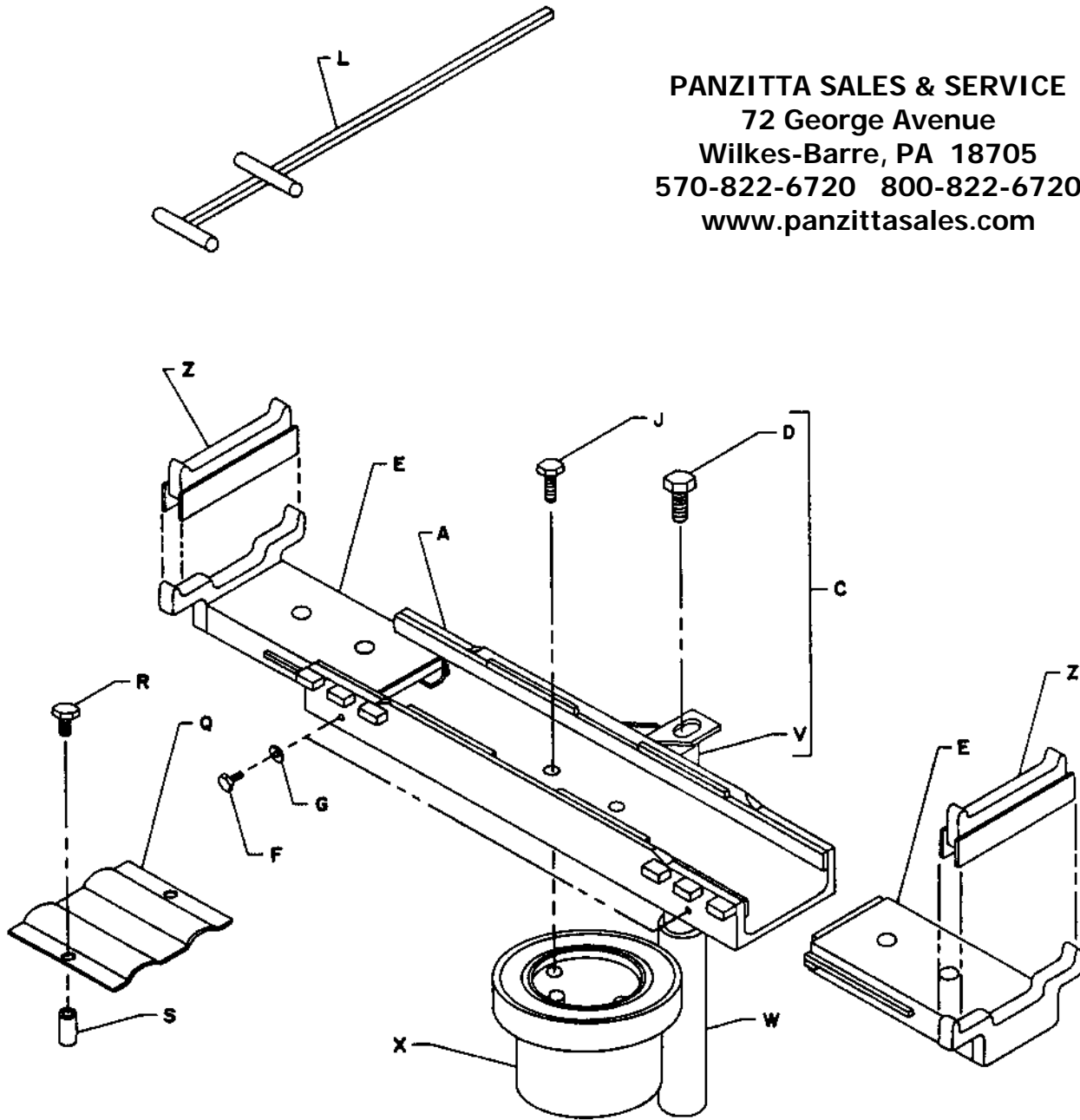


**PARTS LIST FOR**  
**TWO-POST, FULL HYDRAULIC, FIXED**  
**PISTON, AXLE ENGAGING LIFT**  
**10,000 LBS. TOTAL CAPACITY**  
**5,000 LBS. CAPACITY PER PISTON**  
**A-12J3A SERIES**

A-12J3A.max

# FRONT SUPERSTRUCTURE

PANZITTA SALES & SERVICE  
 72 George Avenue  
 Wilkes-Barre, PA 18705  
 570-822-6720 800-822-6720  
 www.panzittasales.com



T13965

Code No.	No. Req.	Symbol No.	Description	Code No.	No. Req.	Symbol No.	Description
A	1	T13930-03	Forward Pickup Base	J	10	Q10412-03	Hex Hd. Bolt 3/4" -10 x 2-3/4"
C	1	N20268-09	Automatic Lock Assy. (Includes D, V and W)	K	1	N20268-08	Automatic Lock Assy. (Includes D, T and W)
D	2	K01914-50	Hex Hd. Bolt 1" -8 x 2-1/2"	L	1	N20372	Slide Handle Assy.
E	2	R13418	Forward Pickup Slide	M	2	R14561	Rear Axis Support
F	2	K01802	Hex Hd. Bolt 3/8" -16 x 1"	N	1	T11999	Slide Assy.
G	2	K50775	Lockwasher 3/8"	P	4	K01909	Hex Hd. Bolt 1/2" -13 x 1"
H	1	R18214-G1	Rear Superstructure	Q	1	T07915	Wheel Stop

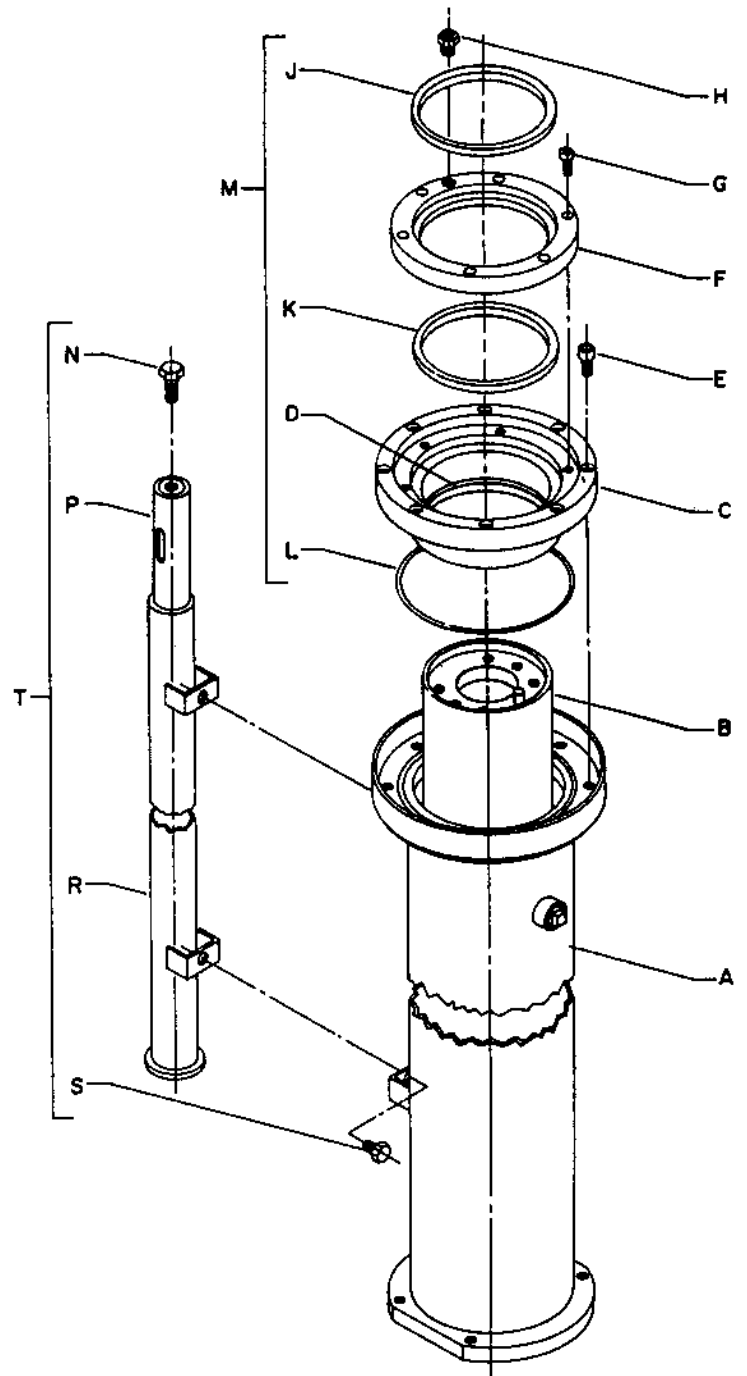
**IMPORTANT: Specify Model and Serial Number of Litt. Also Symbol Number and Name of Part.**



# PLUNGER AND CYLINDER ASSEMBLY (8-1/2" DIA.)

PANZITTA SALES & SERVICE  
72 George Avenue  
Wilkes-Barre, PA 18705  
570-822-6720 800-822-6720  
www.panzittasales.com

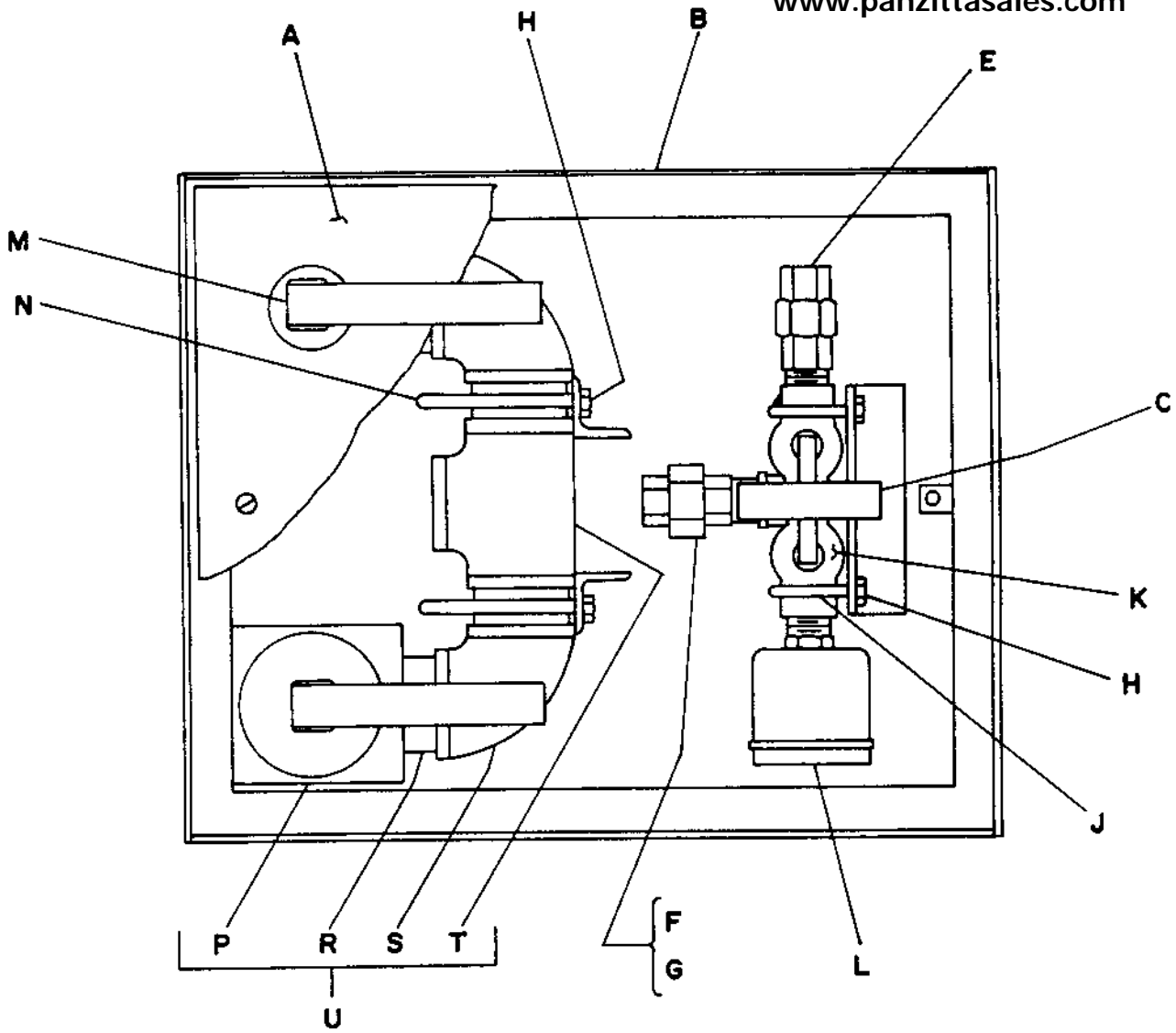
Code No.	No. Req.	Symbol No.	Description
	1	T13921-01	Plunger & Cylinder Assy. (Front)
	1	T13921-02	Plunger & Cylinder Assy. (Rear)
A	1	T13920-G1	Cylinder Assembly (Front)
A	1	T13920-G2	Cylinder Assembly (Rear)
B	1	T13912-G1	Plunger Assembly (Front)
B	1	T13912-G5	Plunger Assembly (Rear)
C	2	T13911-02	Upper Bearing
D	2	K93210-02	Felt Wiper
E	16	Q10034-82	Soc. Hd. Bolt 1/2" -13 x 2"
F	2	T13915-01	Wiper Retainer
G	12	Q10034-28	Soc. Hd. Bolt 3/8" -16 x 3/4"
H	2	N21812-G1	Air Vent
J	2	K93211	Wiper
K	2	K93228	Seal
L	2	Q10068-30	O-Ring
M	2	K34152	Seal Kit (Includes D, J, K & L)
N	2	K01914-50	Hex Hd. Bolt 1" -8 x 2-1/2"
P	1	R13470-06	Telescoping Post & Latch Assy. (Front)
P	1	R13470-01	Telescoping Post & Latch Assy. (Rear)
R	2	R16245-01	Stationary Tube Assy. (Front & Rear)
S	4	K01901	Hex Hd. Bolt 3/8" -16 x 3/4"
T	1	N20268-09	Automatic Lock Assy. (Front)
T	1	N20268-08	Automatic Lock Assy. (Rear)



\*WHEN ORDERING PLUNGER ASSY.  
SPECIFY SYMBOL NO. AND CODE  
LETTER  
STAMPED ON TOP OF PLUNGER.

# CONTROL BOX ASSEMBLY T09396 (OPTIONAL)

PANZITTA SALES & SERVICE  
 72 George Avenue  
 Wilkes-Barre, PA 18705  
 570-822-6720 800-822-6720  
 www.panzittasales.com



R13467

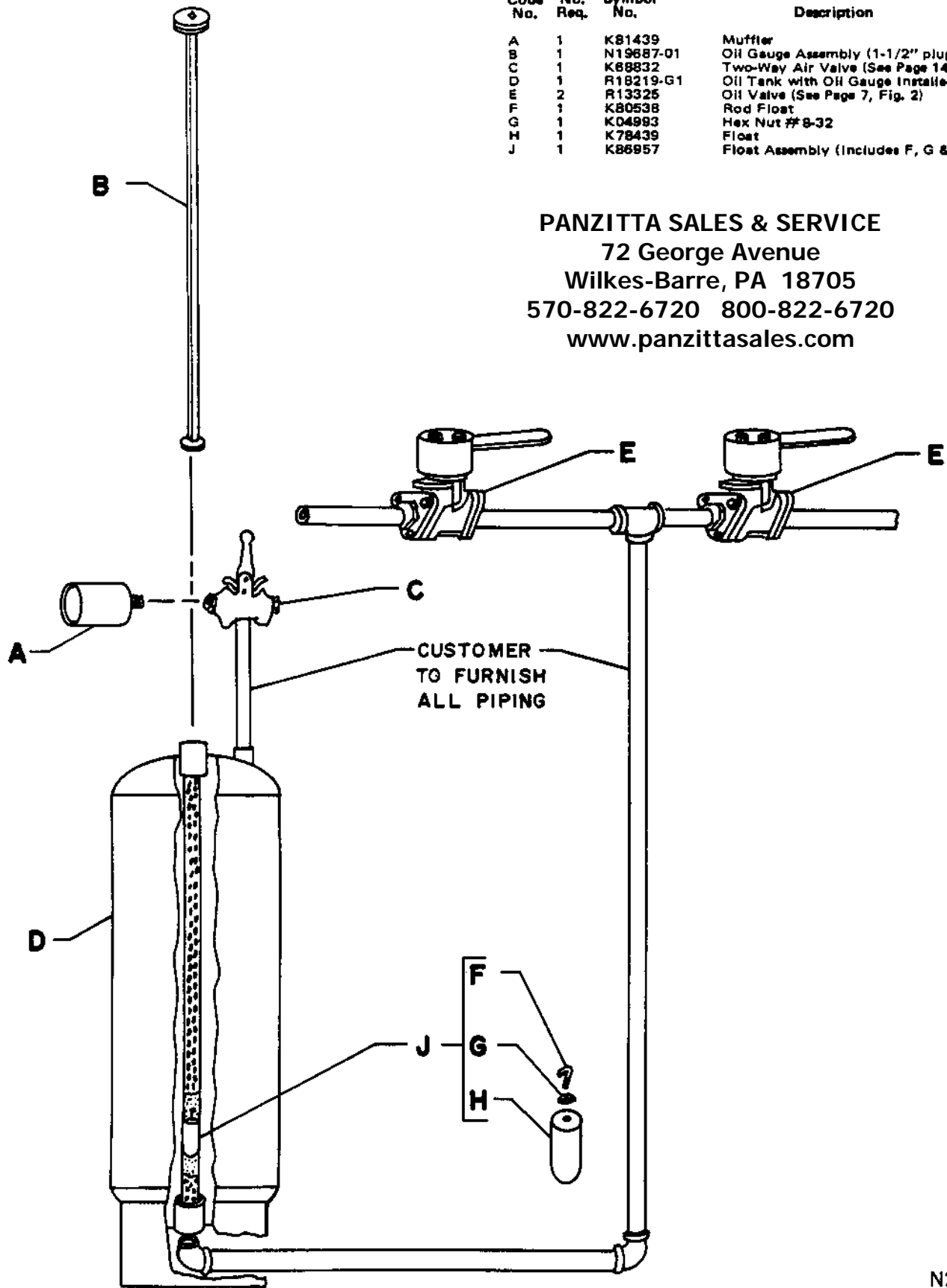
Code No.	No. Req.	Symbol No.	Description	Code No.	No. Req.	Symbol No.	Description
A	1	R13352	Cover	L	1	K81439	Muffler
B	1	T09397	Control Box	M	2	N19602	Oil Control Handle Extension
C	1	N19184	Air Control Handle Extension	N	2	K13758	U-Bolt
E	2	K62635	Male-Female Union 1/2"	P	2	R14467	Oil Valve (See Page 13, Fig. 2)
F	1	K44745	Nipple 1/2" x 1-1/2"	R	4	R11494-51	Nipple 1-1/4" x 1-5/8"
G	1	K07801	Elbow 1/2" x 90°	S	2	K47803	Elbow 1-1/4" x 90°
H	8	K01841	Hex Nut 1/4" -20	T	1	K02308A01	Tee STD 1-1/4"
J	2	K67996-02	U-Bolt	U	1	T09398	Oil Valve & Tee Assembly (Includes P, R, S & T)
K	1	K88963-03	Air Valve (See Page 14, Fig. 1)				

**IMPORTANT:** Specify Model and Serial Number of Lift. Also Symbol Number and Name of Part.

# OIL TANK, GAUGE, VALVES, ETC.

Code No.	No. Req.	Symbol No.	Description
A	1	K81439	Muffler
B	1	N19687-01	Oil Gauge Assembly (1-1/2" plug)
C	1	K68832	Two-Way Air Valve (See Page 14, Fig. 2)
D	1	R18219-G1	Oil Tank with Oil Gauge Installed
E	2	R13325	Oil Valve (See Page 7, Fig. 2)
F	1	K80538	Rod Float
G	1	K04993	Hex Nut #8-32
H	1	K78439	Float
J	1	K86957	Float Assembly (Includes F, G & H)

**PANZITTA SALES & SERVICE**  
 72 George Avenue  
 Wilkes-Barre, PA 18705  
 570-822-6720 800-822-6720  
 www.panzittasales.com



N20369

**IMPORTANT:** *Specify Model and Serial Number of Lift. Also Symbol Number and Name of Part.*

# OIL VALVE

PANZITTA SALES & SERVICE  
 72 George Avenue  
 Wilkes-Barre, PA 18705  
 570-822-6720 800-822-6720  
 www.panzittasales.com

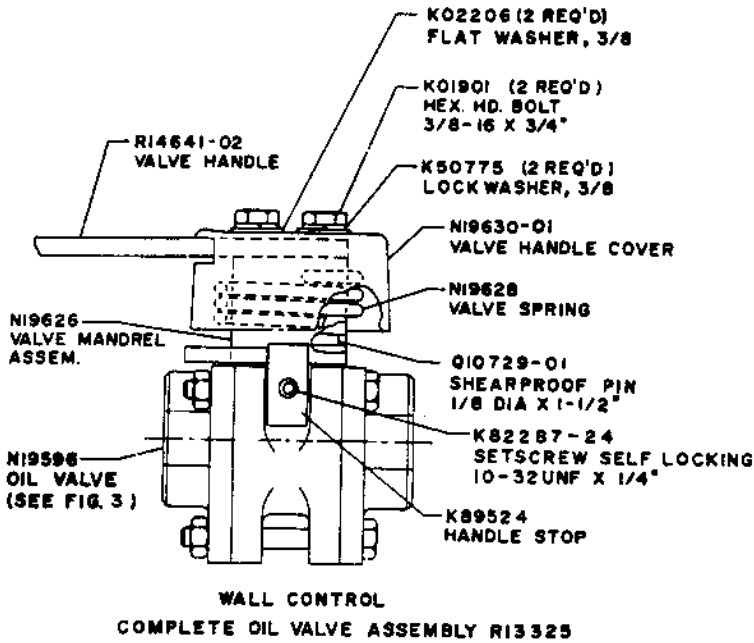


FIG. 1

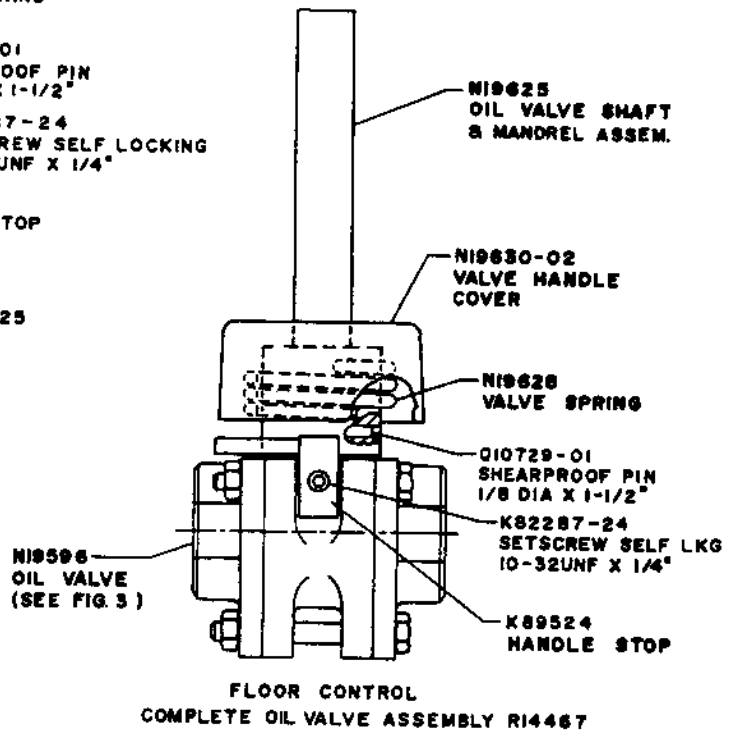


FIG. 2

**NOTE:** THE REPAIR KITS FOR OIL VALVES LISTED BELOW ARE USED TO CHANGE METHOD OF ASSEMBLING VALVE STEM & MANDREL FROM SETSCREW TO SHEARPROOF PIN. (NOTE: FOR VALVE STEMS AND MANDRELS WHICH ARE ALREADY PINNED, ORDER INDIVIDUAL PARTS AS NEEDED).  
 WALL CONTROL REPAIR KIT K34123  
 FLOOR CONTROL REPAIR KIT K34124

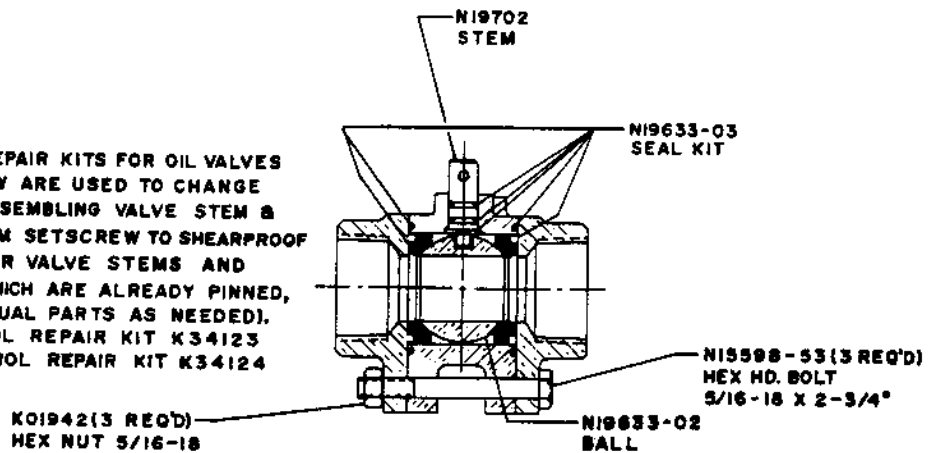
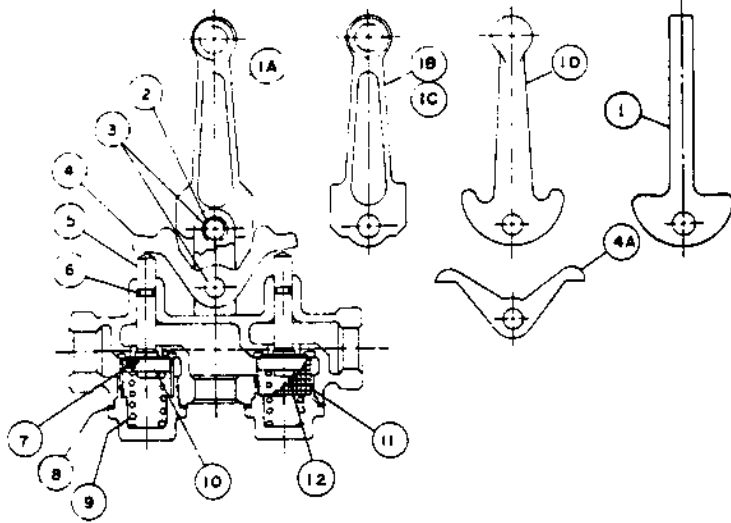


FIG. 3

R14579

**IMPORTANT:** Specify Model and Serial Number of Lift. Also Symbol Number and Name of Part.

# AIR VALVE



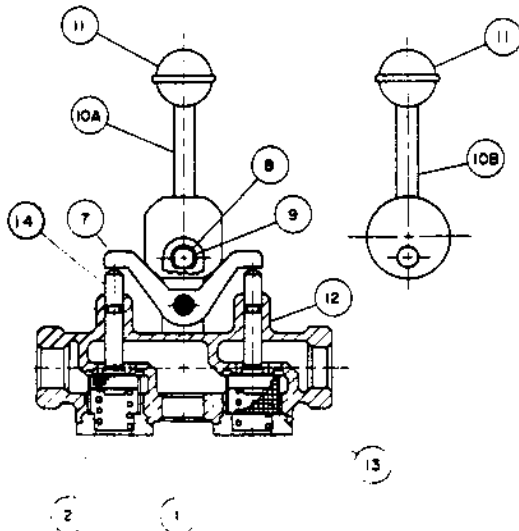
SYM	SYMBOL NO.		QTY	DESCRIPTION
	CONS	BRASS KINGSTON		
1		N19106	1	LEVER, FLOOR CONTROL
1A	N19494-28		1	LEVER, LOCKING
1B	N19494-27		1	LEVER, NON-LOCKING
1C		K82714-20	1	LEVER, LOCKING
1D		K82714-35	1	LEVER, NON-LOCKING
2	N19494-32	N19494-32	4	RETAINING RING
3	N19494-30	N19494-30	2	CLEVIS PIN
4	N19494-29		1	ROCKER ARM
4A		K82714-23	1	ROCKER ARM
5	N19494-26	K82714-28	2	STEM
6	N19494-21	K82714-27	2	O RING
7	N19494-22	K82714-29	2	SEAT WASHER
8	N19494-23		2	FIBER WASHER
9	N19494-20	K82714-32	2	SPRING
10	N19494-25	K82714-30	2	SEAT HOLDER
11	N19494-31		2	SCREEN
12		K82714-31	2	STEM NUT

**PANZITTA SALES & SERVICE**  
 72 George Avenue  
 Wilkes-Barre, PA 18705  
 570-822-6720 800-822-6720  
[www.panzittasales.com](http://www.panzittasales.com)

FIG. 1

TO ORDER A COMPLETE VALVE ASSEMBLY, THE PART NUMBERS ARE:  
 LOCKING TYPE (FULL HYDRAULIC WALL CONTROL) - K68832  
 DEADMAN TYPE (SEMI-HYDRAULIC WALL CONTROL) - K85963 & K85963-02  
 DEADMAN TYPE (ALL FLOOR CONTROL) - K85963-03

FOR AIR VALVE REPLACEMENT PARTS, FIRST DETERMINE MFR. OF VALVE:  
 IF MFR. IS KINGSTON, USE PARTS LIST ABOVE (FIG. 1)  
 IF MFR. IS CONSOLIDATED BRASS AND VALVE HAS A ONE-PIECE CAST HANDLE,  
 USE PARTS LIST ABOVE (FIG. 1)  
 IF MFR. IS CONSOLIDATED BRASS AND VALVE HAS A TWO-PIECE HANDLE WITH  
 A PLASTIC KNOB, USE PARTS LIST BELOW (FIG. 2)



SYM	SYMBOL NO.		QTY	DESCRIPTION
	CONS	BRASS		
1	N20389-01		2	CAP
2	N20389-02		2	SPRING
7	N20389-07		1	ROCKER
8	N20389-08		2	CLEVIS PIN
9	N20389-09		4	RETAINING RING
10A	N20389-10		1	LEVER, LOCKING
10B	N20389-11		1	LEVER, NON-LOCKING
11	N20389-12		1	KNOB
12	N20389-13		1	BODY
13	N20389-14		2	SCREEN
14	N20389-15		2	STEM ASSEMBLY

FIG. 2

FIG. 2

R14580

**IMPORTANT: Specify Model and Serial Number of Lift. Also Symbol Number and Name of Part.**