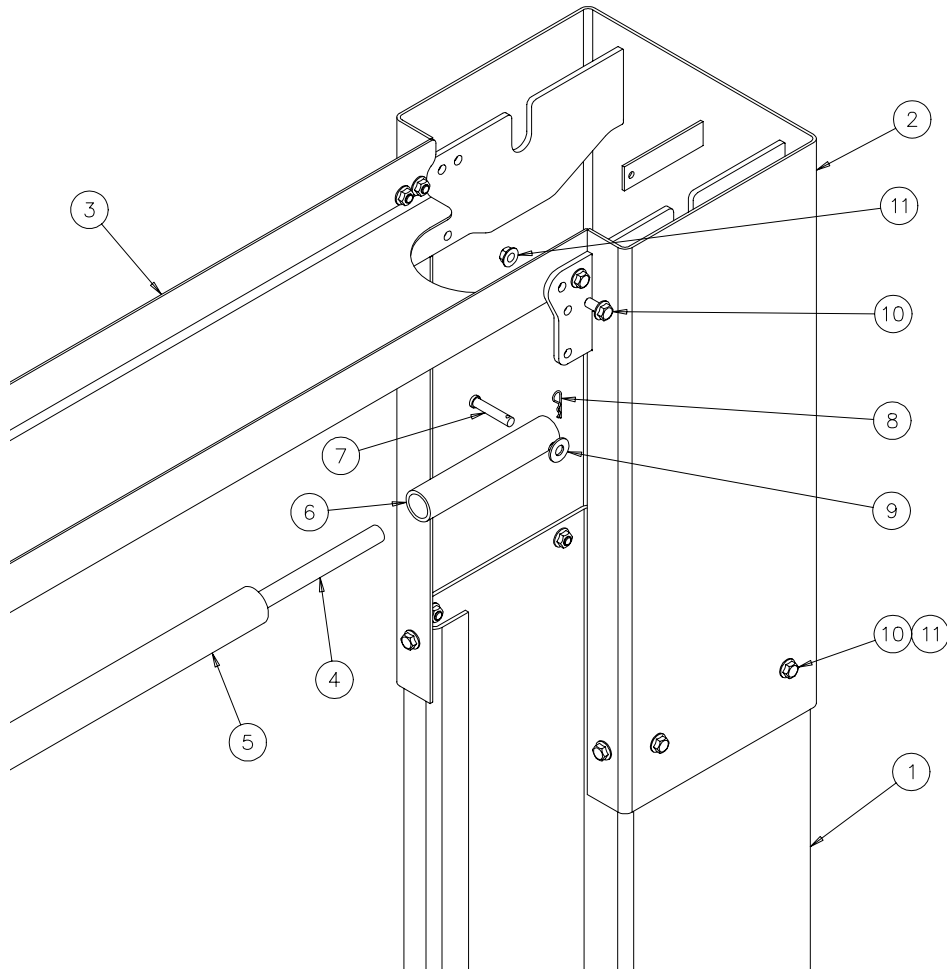


PARTS BREAKDOWN

Fig A. Column & Overhead

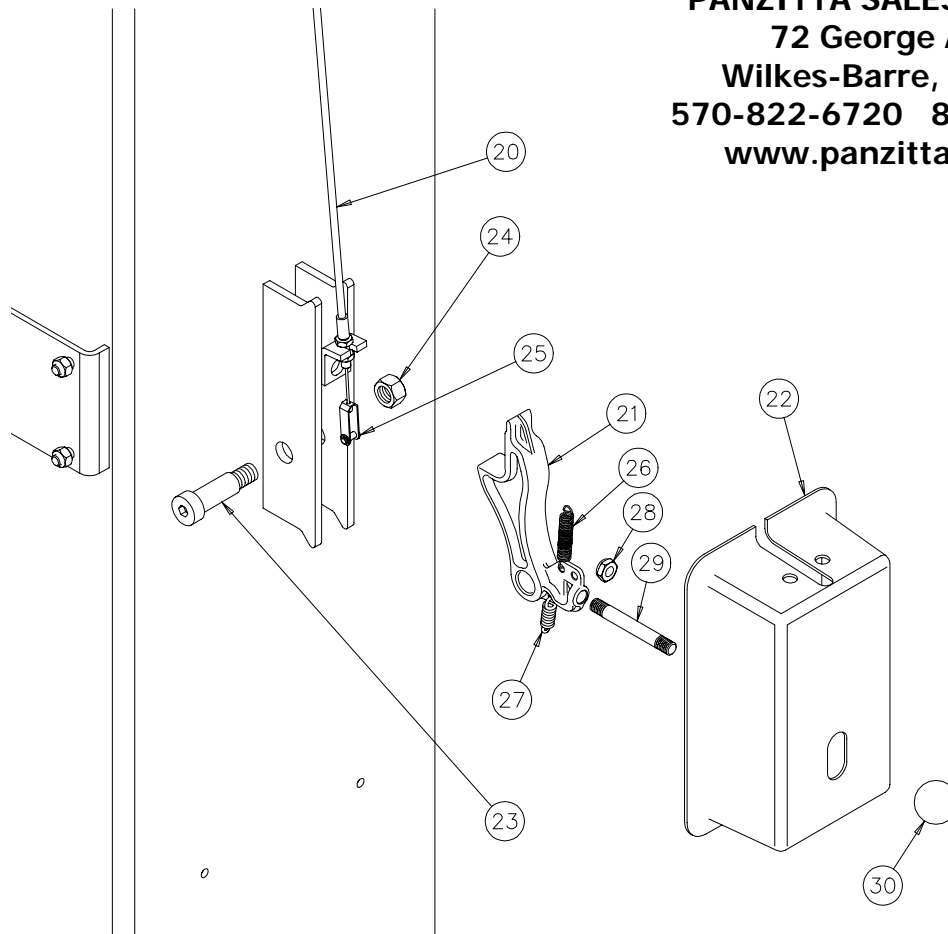


ITEM #	PART #	QTY/LIFT	DESCRIPTION
1	A2010-P	1	POWER COLUMN WELD
	A2010-I	1	IDLER COLUMN WELD
2	A2055-0	2	COLUMN EXTENSION WELD - CL10
	A2055-2		COLUMN EXTENSION WELD - CL10-2
3	A2060	1	OVERHEAD CHANNEL
4	36074	1	SHUTOFF BAR
5	31129	1	PAD
6	36027	1	OVERHEAD LIMIT SWITCH
7	A1064	2	3/8 DIA x 1 7/8 Lg. CLEVIS PIN (SHUTOFF BAR)
8	40124	2	HAIRPIN COTTER PIN
9	31036	7	3/8" FLAT WASHER
10	A1153	24	3/8-16NC HEX.FLG.HD.C.S X 3/4" Lg.
11	A1154	24	3/8-16NC HEX.FLG.NUT

Replace all worn or broken parts with genuine **Challenger Lifts Inc.** parts.
Contact your local Challenger Lifts Parts Distributor for pricing and availability.
(Call Challenger Lifts Inc. (502) 625-0700 for the Parts Distributor in your area)

PARTS BREAKDOWN (continued)

Fig B. Lock



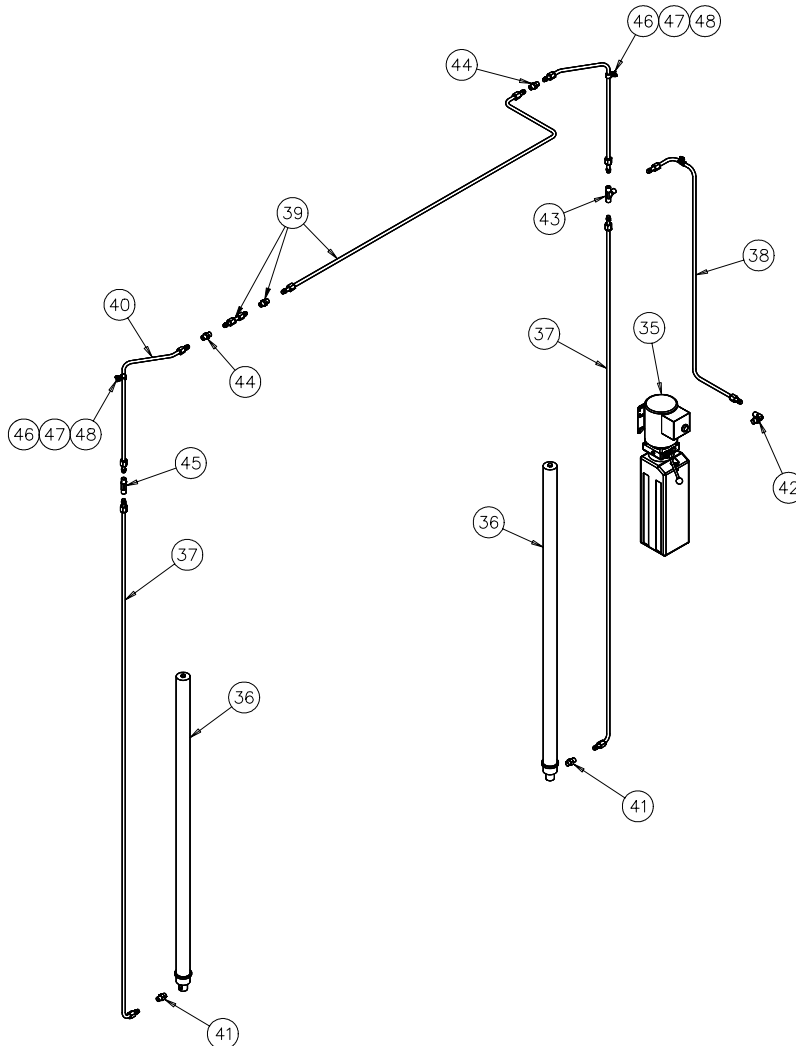
PANZITTA SALES & SERVICE
72 George Avenue
Wilkes-Barre, PA 18705
570-822-6720 800-822-6720
www.panzittasales.com

ITEM #	PART #	QTY/LIFT	DESCRIPTION
20	A2135-0	1	LOCK RELEASE CABLE ASSEMBLY - CL10
	A2135-2		LOCK RELEASE CABLE ASSEMBLY - CL10-2
21	A1042	2	LOCK PAWL
22	A1133	2	LOCK COVER
23	30020	2	LOCK PIN (5/8 x 1 1/2" Lg. SHOULDER BOLT)
24	37013	2	LOCK PIN RETAINER (1/2-13NC HEX LOCK NUT)
25	37119	1	CLEVIS PIN KIT
26	A1131	2	LOCK SPRING (3/8" O.D.)
27	A1132	1	CABLE SPRING (1/2" O.D.)
28	A1139	2	3/8-16NC NYLON INSERT HEX JAM NUT
29	A1134	1	STUD (3/8-16 X .5 BOTH ENDS X 3" Lg.)
30	36096	1	BALL HANDLE

Replace all worn or broken parts with genuine **Challenger Lifts Inc.** parts.
Contact your local Challenger Lifts Parts Distributor for pricing and availability.
(Call Challenger Lifts Inc. (502) 625-0700 for the Parts Distributor in your area)

PARTS BREAKDOWN (continued)

Fig C. Hydraulics

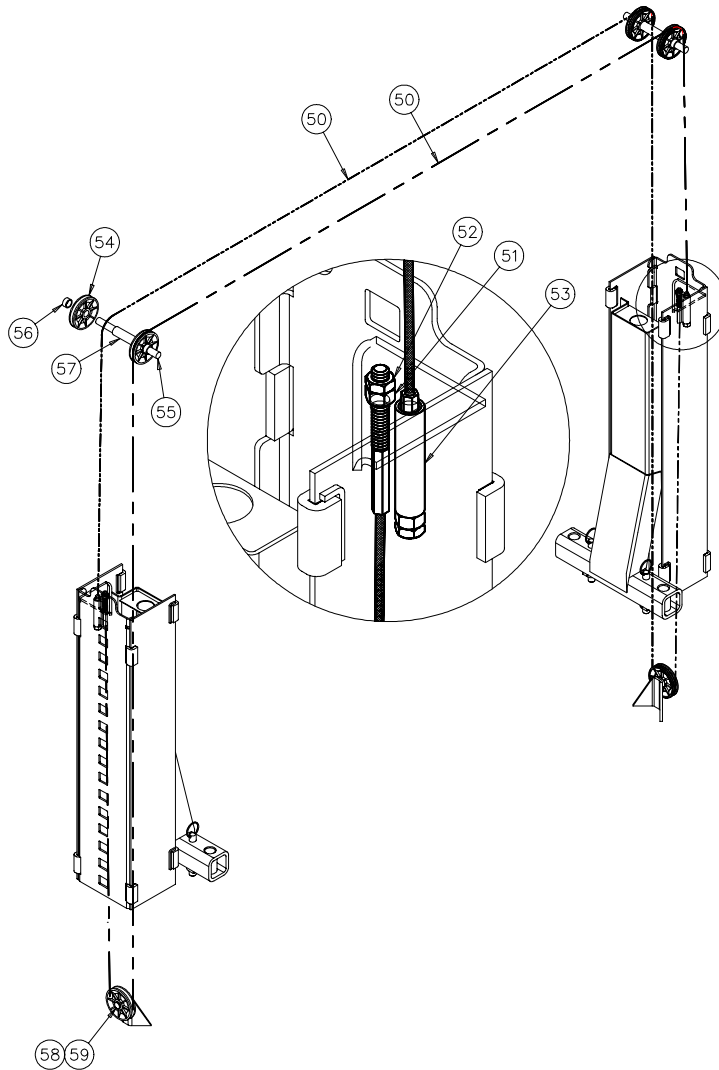


ITEM #	PART #	QTY/LIFT	DESCRIPTION
35	A1201-17	1	POWER UNIT 1ph, 60 Hz, 208-230V
	A1203-17		POWER UNIT 3ph, 60 Hz, 208-230/460V
36	16138	2	CYLINDER (68" STROKE x 2" BORE)
37	A2123	2	CYLINDER LINE
38	A2120	1	PU LINE
39	A2122	1	OH LINE w/4 1/2" EXTENSION
40	A2121-0	2	EXTENSION LINE - CL10
	A2121-2	2	EXTENSION LINE - CL10-2
41	36116	2	3/8 HYD. TUBE x 9/16-18 O-RING ADAPTER
42	31089	1	O-RING ELBOW
43	31032	1	UNION TEE
44	31047	2	UNION
45	A2124	1	BULKHEAD UNION
46	31025	3	LINE CLAMP
47	A2125	3	1/4-20NC HEX.FLG.HD.C.S. x 3/4
48	40085	3	1/4-20NC HEX.FLG.NUT

Replace all worn or broken parts with genuine **Challenger Lifts Inc.** parts.
Contact your local Challenger Lifts Parts Distributor for pricing and availability.
(Call Challenger Lifts Inc. (502) 625-0700 for the Parts Distributor in your area)

PARTS BREAKDOWN (continued)

Fig D. Synchronizer

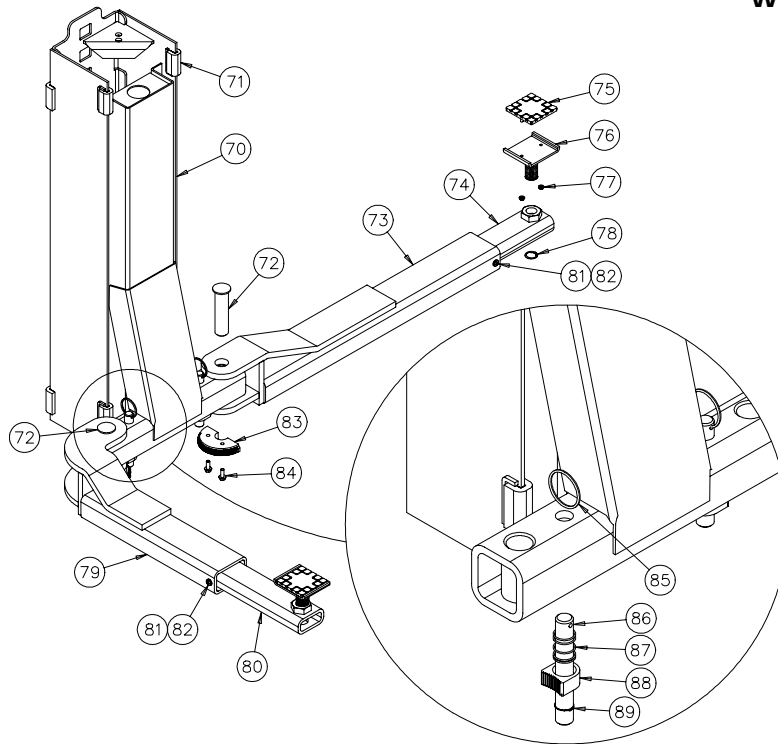


ITEM #	PART #	QTY/LIFT	DESCRIPTION
50	A2115-0	2	SYNCHRONIZER CABLE - CL10
	A2115-2		SYNCHRONIZER CABLE - CL10-2
51	A2116	4	5/8-11NC HEX NUT
52	A2117	4	5/8-11NC HEX JAM NUT
53	A2118	2	CABLE SPACER (4 1/2" LONG)
54	36025	6	SHEAVE ASSEMBLY (5" DIA. X 5/16" GROOVE)
55	36024	2	SHEAVE PIN
56	A1063-S	4	SHORT SHEAVE SPACER
57	A1063-L10	2	LONG SHEAVE SPACER
58	36013	2	1" I.D. SPACER WASHER
59	36014	2	1" EXT. RETAINING RING

Replace all worn or broken parts with genuine **Challenger Lifts Inc.** parts.
Contact your local Challenger Lifts Parts Distributor for pricing and availability.
(Call Challenger Lifts Inc. (502) 625-0700 for the Parts Distributor in your area)

PARTS BREAKDOWN (continued)

Fig E. Carriage & Arms



ITEM #	PART #	QTY/LIFT	DESCRIPTION
70	A2025	2	CARRIAGE WELD
71	31023	16	SLIDE BLOCK ASSY
72	A1078	4	ARM PIN WELD
73	A2091	2	REAR FEMALE ARM WELD
74	A1094-R10	2	MALE ARM WELD (REAR)
75	A1104	4	FOOT PAD RUBBER INSERT
76	A1101	4	FOOT PAD WELD
77	31061	8	1/4-20 KEPS NUT
78	39111	4	FOOT PAD RETAINER RING
79	A2086-P	1	FRONT FEMALE ARM WELD (POWER)
	A2086-I	1	FRONT FEMALE ARM WELD (IDLER)
80	A1094-F	2	MALE ARM WELD (FRONT)
81	31305	4	3/8 MALE ARM RETAINER SCREW
82	31037	4	3/8 LOCK WASHER
83	A1070	4	INNER GEAR
84	A1068	8	3/8-16NCx1 Lg. HEX .FLG.LOCK.HD.C.S. GR.5 ZN PLT
85	A1075	4	PULL RING
86	A1073	4	SHAFT
87	31109	4	COMPRESSION SPRING (RESTRAINT SHAFT)
88	A1072	4	OUTER GEAR
89	36014	4	1" EXT. RETAINING RING
	A2090	2	REAR ARM ASSY
	A2085-P	1	FRONT ARM ASSY (POWER)
	A2085-I	1	FRONT ARM ASSY (IDLER)
	A1100	4	FOOT PAD ASSY
	A1077	4	ARM RESTRAINT SHAFT ASSY

Replace all worn or broken parts with genuine **Challenger Lifts Inc.** parts.
Contact your local Challenger Lifts Parts Distributor for pricing and availability.
(Call Challenger Lifts Inc. (502) 625-0700 for the Parts Distributor in your area)