

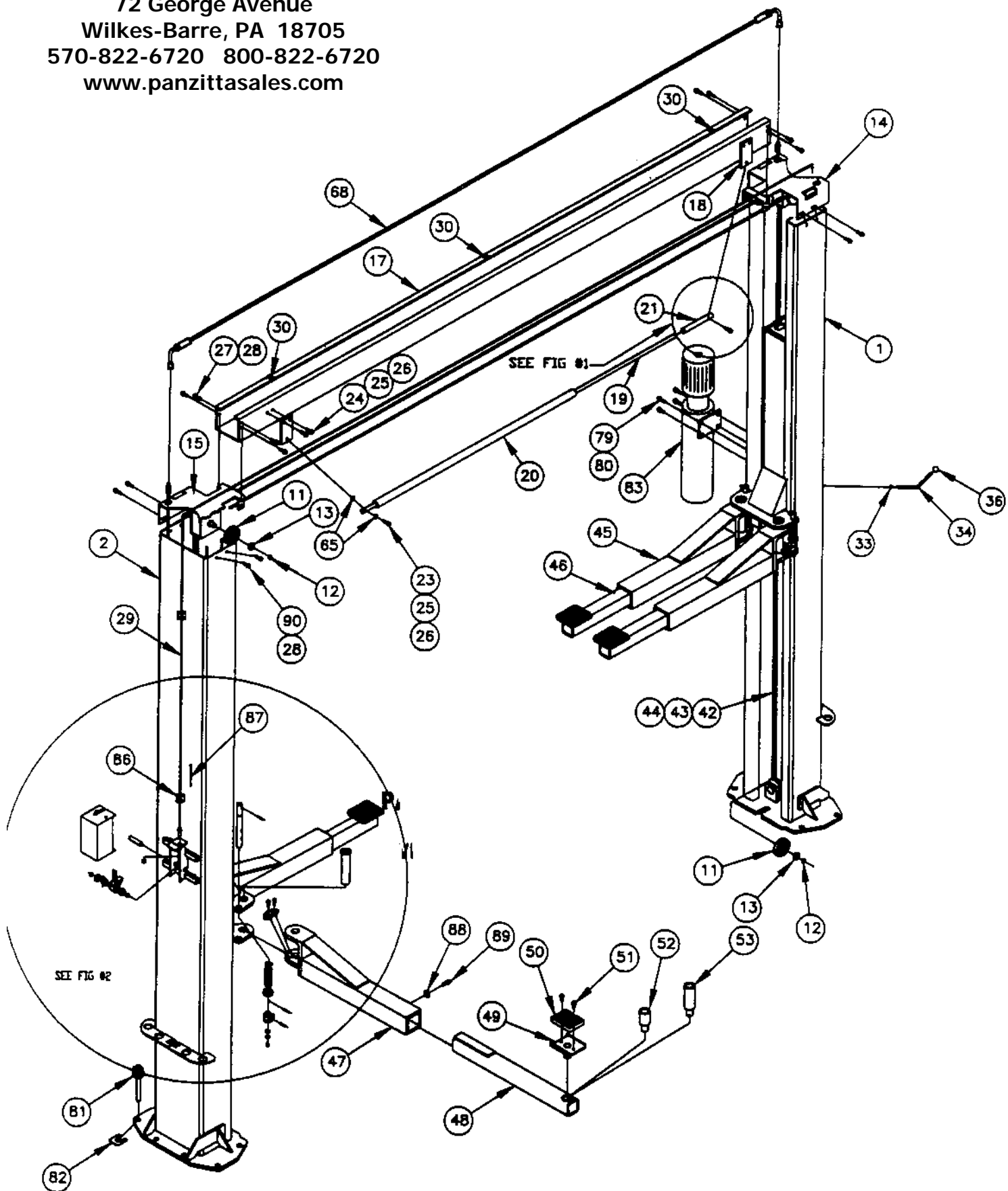
**PANZITTA SALES & SERVICE**  
72 George Avenue  
Wilkes-Barre, PA 18705  
570-822-6720 800-822-6720  
[www.panzittasales.com](http://www.panzittasales.com)

**BEN PEARSON**

**PARTS MANUAL - 9000AI & 9000SI**

9000AI-SI PARTS.max

PANZITTA SALES & SERVICE  
72 George Avenue  
Wilkes-Barre, PA 18705  
570-822-6720 800-822-6720  
www.panzittasales.com



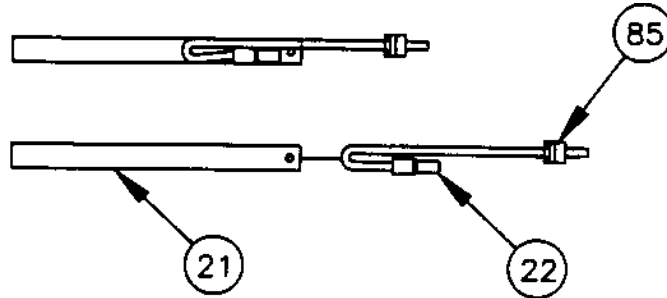


FIG #1

**PANZITTA SALES & SERVICE**  
 72 George Avenue  
 Wilkes-Barre, PA 18705  
 570-822-6720 800-822-6720  
[www.panzittasales.com](http://www.panzittasales.com)

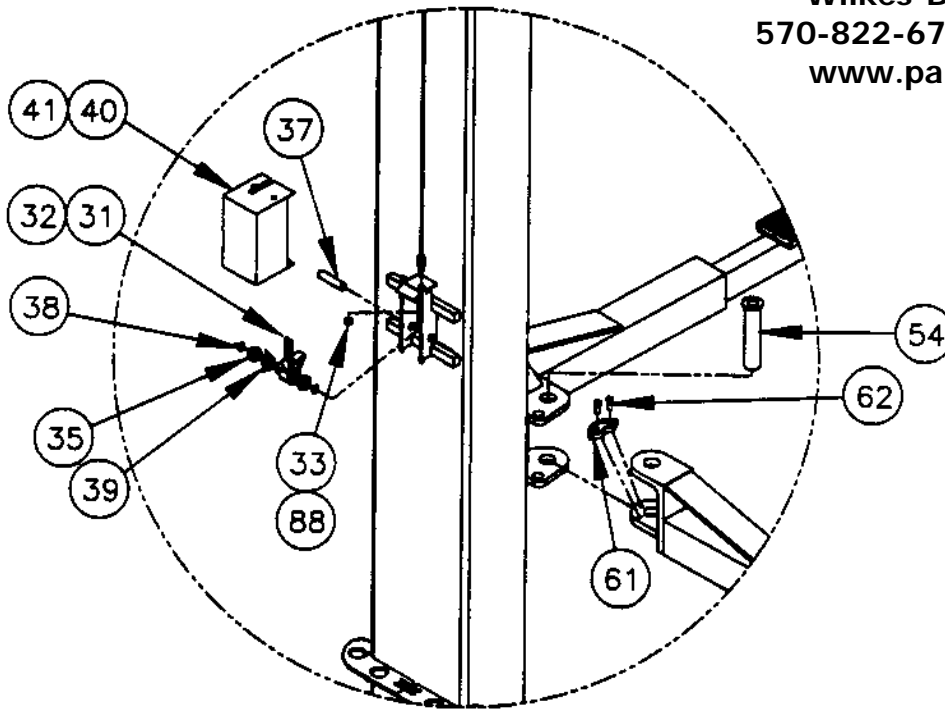
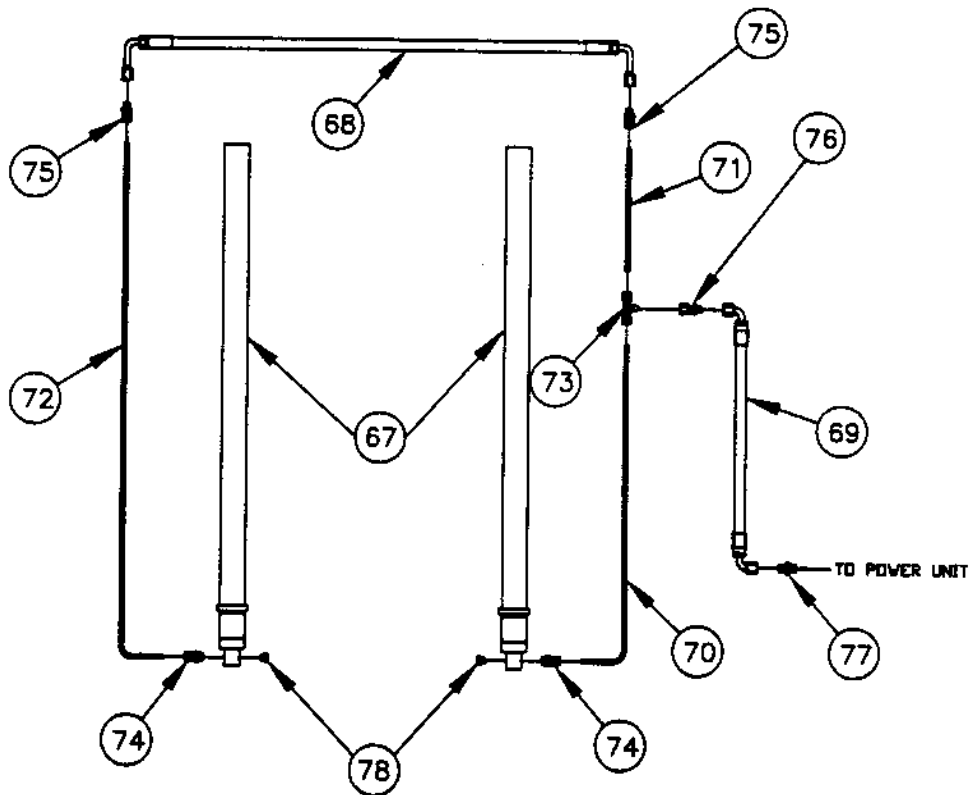
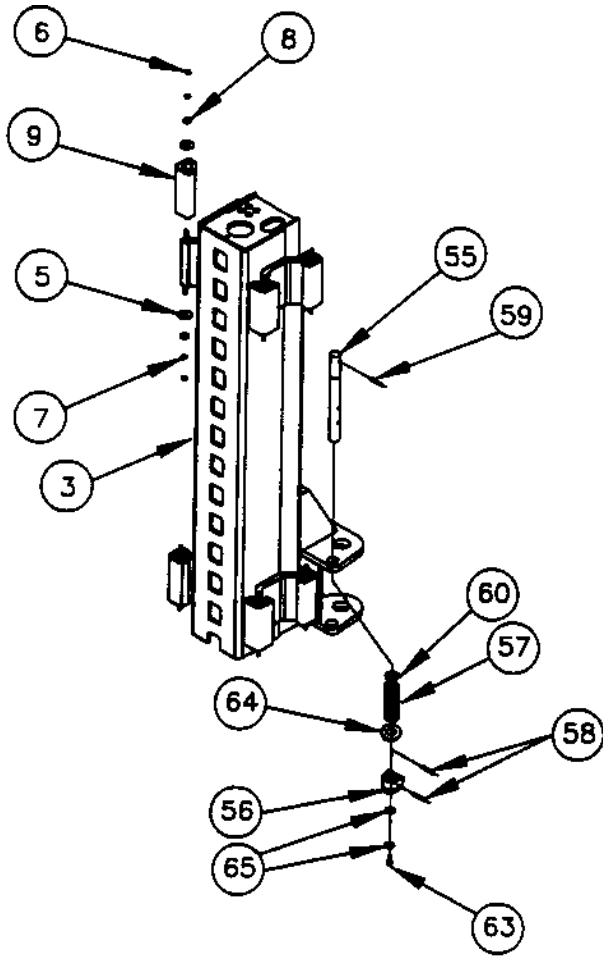


FIG #2

PANZITTA SALES & SERVICE  
72 George Avenue  
Wilkes-Barre, PA 18705  
570-822-6720 800-822-6720  
www.panzittasales.com



	BASE MODEL	9000AI		9000SI	
	LIFT PART NUMBER	90055		90058	
	OVERALL HEIGHT	141-3/8"	QT	141-3/8"	QT
1	POST STRUCTURE - RH	91500	1	91605	1
2	POST STRUCTURE - LH	91512	1	91512	1
3	CARRIAGE STRUCTURE	91513	2	91513	2
5	1/4 FENDER WASHER	101024	16	101024	16
6	HEX NUT 1/4-20NC	100131	8	100131	8
7	LOCKWASHER 1/4	100134	8	100134	8
8	FLATWASHER 1/4" SAE	100065	16	100065	16
9	BEARING BLOCK	91564	16	91564	16
11	SHEAVE	91565	6	91565	6
12	SNAP RING 3/4"	103000	6	103000	6
13	FLATWASHER 3/4" SAE	100512	6	100512	6
14	TOP CAP STRUCTURE - RH	91528	1	91607	1
15	TOP CAP STRUCTURE - LH	91529	1	91607	1
17	CROSSOVER CHANNEL	91566	1	91566	1
18	BRACKET - SHUTOFF MOUNTING	91567	2	91567	2
19	PIPE - SHUTOFF BAR	91568	1	91568	1
20	CUSHION - SHUTOFF BAR	91577	1	91577	1
21	HOLDER - SWITCH	91570	1	91570	1
22	SWITCH - MERCURY OVERHEAD	91571	1	91571	1
23	5/16 X 1-1/4 SHOULDER BOLT	101031	2	101031	2
24	HHS 1/4 20 NC X 3/4	100207	4	100207	4
25	HEX NUT 1/4-20NC	100131	6	100131	6
26	LOCKWASHER 1/4"	100134	6	100134	6
27	HFHSL SCREW 3/8-16NC X 3/4	100179	8	100179	8
28	HFHSL NUT 3/8-16NC	100239	8	100239	8
29	ACTUATOR CABLE - ASSEMBLY	91572	1	91620	1
91	ACTUATOR CABLE - EH1	91628	1	91630	1
91	ACTUATOR CABLE - EH2	91629	1	91631	1
30	CLIP - CABLE	103021	3	103021	3
31	RH CARRIAGE LATCH	91599	1	91599	1
32	LH CARRIAGE LATCH	91600	1	91600	1
33	HEX JAM NUT 3/8-16	101029	1	101029	1
34	HANDLE - CARRIAGE STOP	91574	1	91574	1
35	FLAT WASHER 3/4" SAE ZINC	100512	4	100512	4
36	KNOB	91575	1	91575	1
37	PIN - PIVOT - CARRIAGE STOP	91576	2	91576	2
38	3/4" SNAP RINGS	103000	4	103000	4
39	TORSION SPRING - CARRIAGE STOP	103016	2	103016	2
40	PIPE COVER - RH	91569	1	91569	1
41	PIPE COVER - LH	91533	1	91533	1
93	EXTENSION WELDMENT - 1' EH1	91636	2	91636	2
93	EXTENSION WELDMENT - 2' EH2	91633	2	91633	2
94	3/8-16 HFHSL NUT - EH1 & EH2	100239	8	100239	8
95	3/8-16 X 1 HFHSL BOLT - EH1 & EH2	100238	8	100238	8
96	1/4-20 X 3/4 HHCS - EH1 & EH2	100207	2	100207	2
97	1/4 FLAT WASHER - EH1 & EH2	100065	2	100065	2
98	1/4 EXTERNAL TOOTH LOCK WASHER - EH1 & EH2	100201	2	100201	2
99	1/4-20 NUT - EH1 & EH2	100131	2	100131	2
#	WIRE NUT - EH1 & EH2	61089	2	61089	2
42	EQUALIZER CABLE	91593	2	91579	2
92	EQUALIZER CABLE - EH1	91626	2	91624	2
92	EQUALIZER CABLE - EH2	91627	2	91625	2
43	FLATWASHER 5/8" SAE	100155	4	100155	4
44	HEX NUT 5/8-11NC	100192	8	100192	8
45	FRONT ARM STRUCTURE	91537	2	91613	2
46	FRONT ARM EXTENSION STRUCTURE	91542	2	91615	2
47	REAR ARM STRUCTURE	91548	2	91613	2

	BASE MODEL	9000AI		9000SI
	LIFT PART NUMBER	90055		90058
	OVERALL HEIGHT	141-3/8"	QT	141-3/8" QT
48	REAR ARM EXTENSION STRUCTURE	91551	2	91615 2
#	LIFT PAD ASSEMBLY	91555	4	91555 4
49	LIFT PAD STRUCTURE	91556	1	91556 1
50	PAD LIFT - BOLT ON	91559	1	91559 1
51	HFHSL 3/8-16NC X 3/4	100179	2	100179 2
52	LIFT PAD EXTENSION 2-5/8"	91560	4	91560 4
53	LIFT PAD EXTENSION 5"	91562	4	91562 4
54	ARM PIN STRUCTURE	91063	4	91063 4
#	ARM RESTRAINT KIT	91580	4	91580 4
55	SHAFT - ARM RESTRAINT	91581	1	91581 1
56	GEAR - LOCKING	91582	1	91582 1
57	SPRING - ACTUATING - ARM RESTRAINT	103017	1	103017 1
58	ROLL PIN - 3/16 X 1-1/2	103009	2	103009 2
59	ROLL PIN - 1/4 X 2-1/2	103018	1	103018 1
60	1" SNAP RING	103019	1	103019 1
61	GEAR - ARM RESTRAINT	91584	1	91584 1
62	SOCKET HEAD CAP SCREW 3/8-16NC X 1"	101028	2	101028 2
63	SOCKET HEAD CAP SCREW-5/16-18 X 3/4	101027	1	101027 1
64	FLAT WASHER 1" SAE	100143	1	100143 1
65	FLAT WASHER 5/16" SAE	100088	2	100088 2
#	HYDRAULIC KIT	91585	1	91585 1
67	CYLINDER	91586	2	91586 2
68	HYDRAULIC HOSE	91594	1	91621 1
69	HYDRAULIC HOSE	91595	1	91595 1
70	HYDRAULIC LINE	91596	1	91596 1
71	HYDRAULIC LINE	91597	1	91597 1
72	HYDRAULIC LINE	91598	1	91598 1
100	HYDRAULIC TUBE EXTENSION - EH1	91639	2	91639 2
100	HYDRAULIC TUBE EXTENSION - EH2	91638	2	91638 2
101	STRAIN RELIEF - EH1 & EH2	103023	2	103023 2
102	JUNCTION BOX - EH1 & EH2	103027	1	103027 1
103	COVER PLATE - JUNCTION BOX EH1 & EH2	103026	1	103026 1
104	CORD - JUNCTION BOX - EH1 & EH2	103028	1	103028 1
105	UNION TUBE FITTING - EH1 & EH2	105032	2	105032 2
#	CABLE TIE - EH1 & EH2	103025	4	103025 4
73	MALE BRANCH TEE	105022	1	105022 1
74	CONNECTOR - STRIAIGHT	105023	2	105023 2
75	UNION ADAPTER	105024	2	105024 2
76	FEMALE BULKHEAD CONNECTOR	105025	1	105025 1
77	ADAPTER 9/16ORB X 9/16JIC	60544	1	60544 1
78	PLUG 9/16 ORB	105026	2	105026 2
79	HHFL SCR 5/16X18NCX3/4 GR. 5	100234	4	100234 4
80	HH FL NUT 5/16 X 18NC	100237	4	100237 4
81	ANCHOR BOLT 3/4 X 4-3/4"	95000	12	95000 12
82	SHIMS	95001	24	95001 24
83	POWER UNIT - O/H 1PHASE 220V	95011	1	95011 1
84	RELIEF VALVE - RV15	105027	1	105027 1
85	STRAIN RELIEF	103023	1	103023 1
86	ADHESIVE 4-WAY CABLE TIE	103020	4	103020 4
87	CABLE TIE	103025	4	103025 4
88	FLATWASHER 3/8" SAE	100082	6	100082 6
89	3/8 x 3/4 SELF TAPPING SCREW	101025	4	101025 4
90	HFHSL 3/8-16NC X 1-1/4	100382	8	100382 8
#	RELIEF VALVE-RV15			
#	SERIAL NAME PLATE	95056	1	95056 1
#	IBEN PEARSON DECAL 5X36 MYLAR	95005	2	95005 2
#	IPB/800 DECAL 2X5 MYLAR	95006	1	95006 1
#	CAUTION DECAL 9000 LB	95007	2	95007 2
#	ETL DECAL	95045	1	95045 1
#	ALI UNIFORM WARNING LABELS	95046	1	95046 1

**PANZITTA SALES & SERVICE**  
 72 George Avenue  
 Wilkes-Barre, PA 18705  
 570-822-6720 800-822-6720  
 www.panzittasales.com

	BASE MODEL	9000AI	9000SI
	LIFT PART NUMBER	90055	90058
	OVERALL HEIGHT	141-3/8"	141-3/8" QT
#	IALI SAFETY REQUIREMENTS FOR OPERATION	1	95047 1
#	IALI LIFTING POINT QUICK REF.	95048 1	95048 1
#	LIFTING IT RIGHT MANUAL	95049 1	95049 1
#	BLUE TOUCH-UP PAINT	103007 1	103007 1
#	YELLOW TOUCH-UP PAINT	103008 1	103008 1
#	WARRANTY CARD	83423 1	83423 1
#	MANUAL	95055 1	95055 1
#	NOT SHOWN		

9000AI-SI PARTS.max