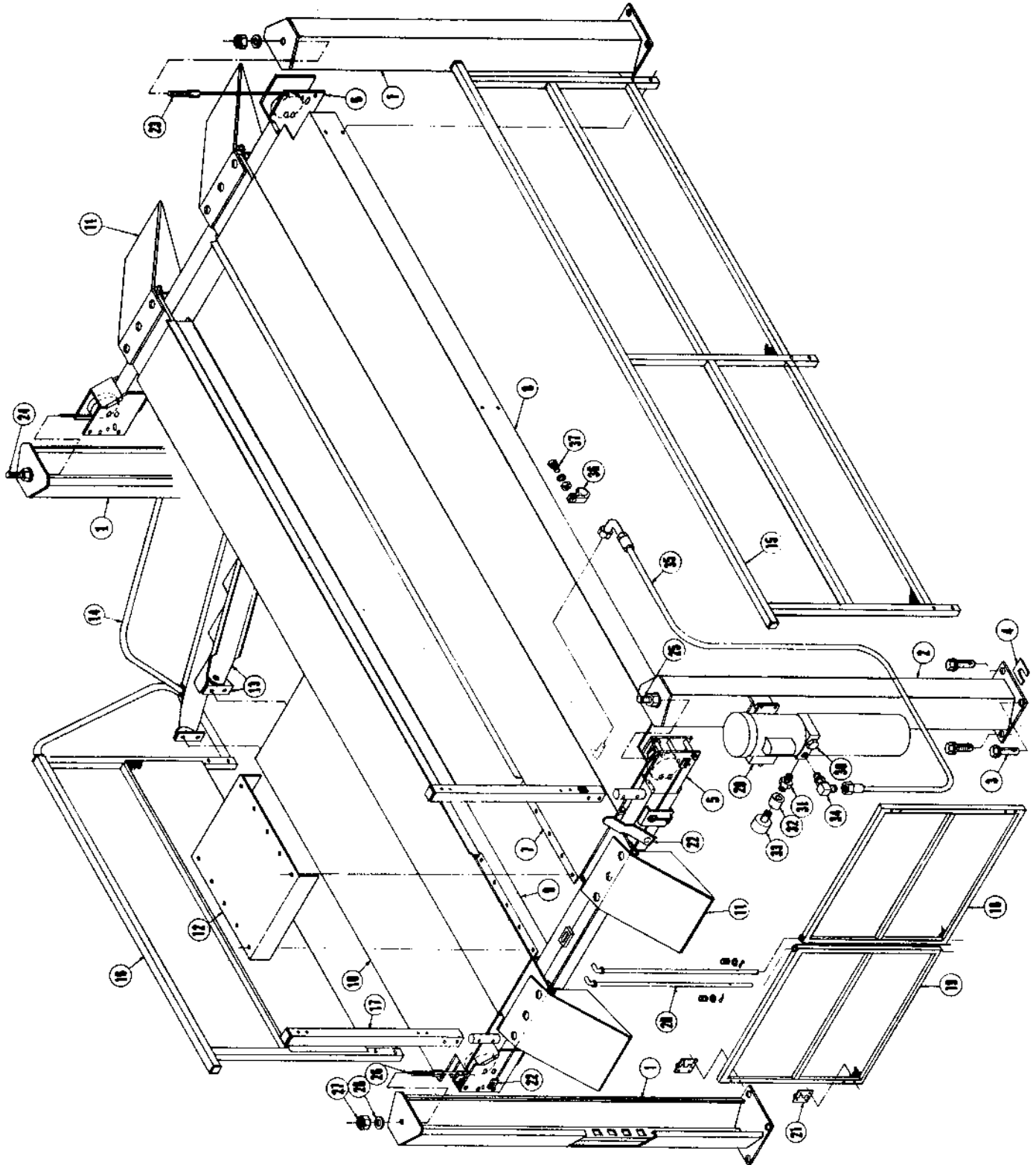


LIFT PARTS
MODEL QLR-2000

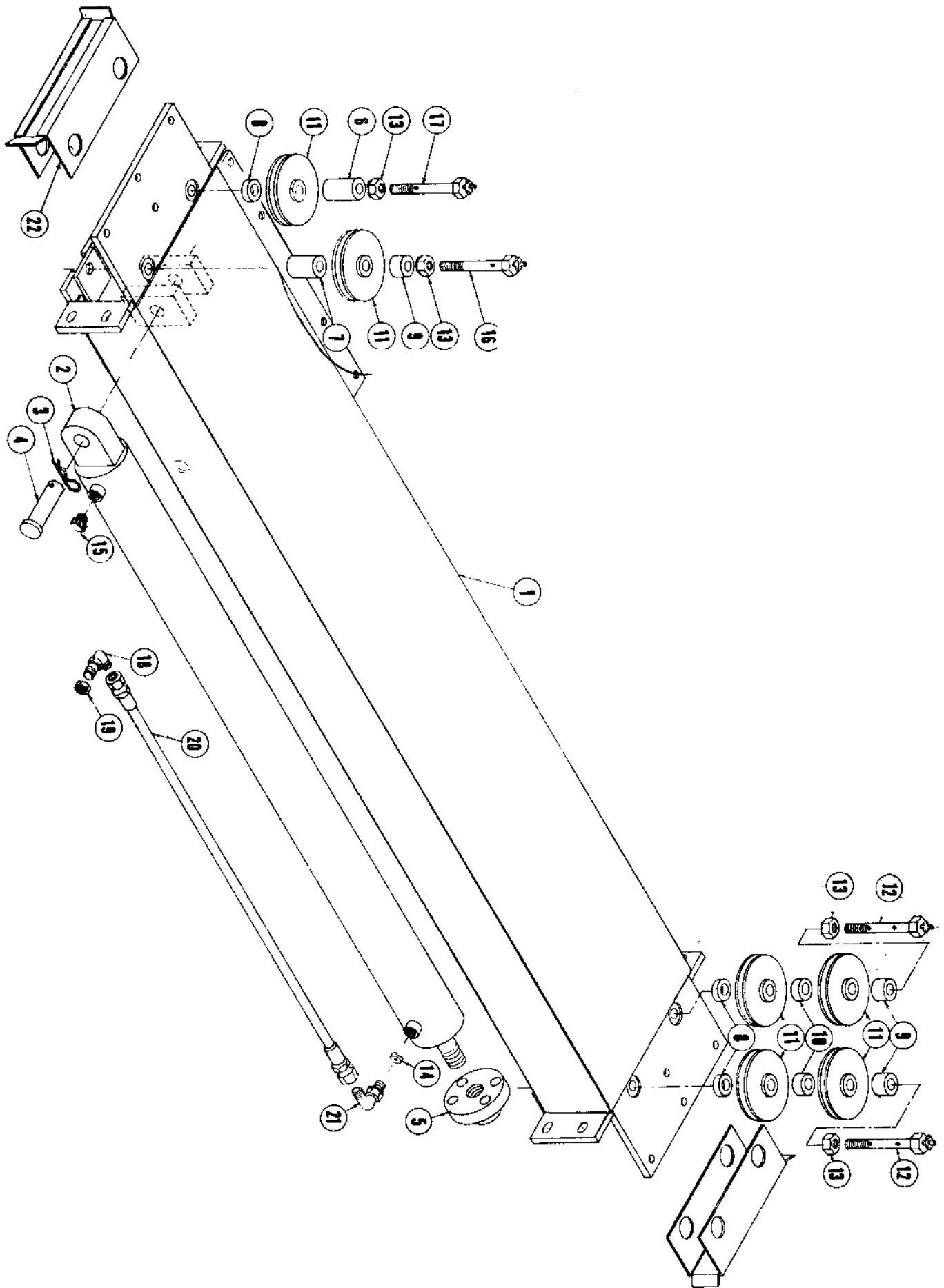


QLR.max

LIFT PARTS
QLR 2000

Code	Part Name	Qty.	Part No.
1	Post Structure	3	81261
2	Post Structure w/Power Unit Mount	1	81262
3	Anchor Bolt 3/4 x 4	16	80062
4	Shim Kit (32 Shims)	1	80589
5	Front Cross Tube Ass'y. (See Breakdown)	1	82543
6	Rear Cross Tube Ass'y. (Ref. Breakdown)	1	82544
7	LH Track Ass'y. Stationary (See Breakdown)	1	82425
	HFHSL Screw (Track-Cross Tubes) 1/2-13 x 1 1/4	8	100304
8	LH Track Extension Structure	1	82655
	HFHSL Screw (Ext. to Track) 3/8-16NC x 1	12	100238
	HFHSL Nut (Ext. to Track) 3/8-16NC	12	100239
	Hex Screw (Adj.) 1/2-13NC x 1 1/4	3	100010
	HFHSL Screw (Ext. to Cross Tube) 1/2-13NC x 1 1/4	4	100304
9	RH Track Structure	1	82428
	HFHSL Screw (Track - Cross Tubes) 1/2-13 x 1 1/4	4	100304
	HFHSL Nut (Track - Cross Tubes) 1/2-13NC	4	100039
10	RH Track Extension Structure	1	82656
	HFHSL Screw (Ext. to Track) 3/8-16NC x 1	8	100238
	HFHSL Nut (Ext. to Track) 3/8-16NC	8	100239
	Hex Screw (Adj.) 1/2-13NC x 1 1/4	2	100010
	HFHSL Screw (Ext. to Cross Tube) 1/2-13NC x 1 1/4	2	100304
	HFHSL Nut (Ext. to Cross Tube) 1/2-13NC	2	100039
11	Ramp Assembly	4	81537
12	Cover - Center	1	82450
	Carriage Bolt Rd. Hd. 5/16-18NC x 1	10	100307
	HFHSL Nut 6/16-18NC	10	100237
13	Ladder Assembly	1	82684
	Ladder Structure	1	82460
	Wheel w/Bushing	2	82491
	Support - Ladder	2	82459
	HFHSL Screw (Ladder Mount) 3/8-16NC x 1 Gr. 5	4	100238
	HFHSL Nut (Ladder Mount) 3/8-16NC	4	100239
14	Handrail Structure - Ladder	1	82729
	HFHSL Screw 3/8-16NC x 1	2	100238
15	LH Handrail Structure	1	82589
16	RH Handrail Structure	1	82451
	HFHSL Screw (Handrail to Exts.) 3/8-16 x 2 1/2	10	100209
	HFHSL Nut (Handrail to Exts.) 3/8-16NC	10	100239
17	Post Structure - Gate	2	82670
	Hex Screw (Adj.) 1/2-13NC x 1 1/4	2	100010
	Hex Screw (Mount Post) 3/8-16NC x 2 1/2	4	100209
	Hex Nut 3/8-16NC	4	100239
18	LH Gate Structure	1	82541
19	RH Gate Structure	1	82542
20	Rod Structure - Gate	2	82673
	Spring	2	80700
	Flat Washer	2	100062
	Cotter Pin	2	100175
21	Hinge	4	82556
	Hex Machine Screw #10-24NC x 2 1/2	16	100294
	Lock Washer #10	16	100099
	Hex Nut #10-24NC	16	100115

Code	Part Name	Qty.	Part No.
22	Handle - Linkage - Pivot (Per Breakdown)	1	-
23	Cable Assembly - LH Rear	1	82455
24	Cable Assembly - RH Rear Assembled in Tracks	1	82456
25	Cable Assembly - LH Front	1	82457
26	Cable Assembly - RH Front	1	82458
27	Hex Nut - Nylock 3/4-10 NC	8	80427
28	Flat Washer	8	100170
29	Power Unit 10-2 HP	1	82509
	Hex Screw (Mount PU) 5/16-18NC x 7/8	4	100198
	Lock Washer 5/16	4	100159
	Hex Nut 5/16-18NC	4	100102
#	Connecting Body 10 - 3 Wire Ground	1	80136
30	Plug (Return Post) 9/16 ORB	1	100026
31	Hex Pipe Nipple (MTE Only) 3/8 x 1/4	1	61496
32	Coupling (MTE Only) 1/4 NPT	1	82066
33	Dry Pressure Gauge 1/4 NPT Stem	1	80124
34	90° Elbow 9/16 ORB x 3/4 JIC	1	82056
35	Hose Assembly 3/8 ID	1	82587
36	Hose Clamp	1	80839
37	Hex Screw 5/16-18NC x 1 Gr. 5	1	100111
	Lock Washer 5/16	1	100159
	Hex Nut 5/16-18NC	1	100102
#	Decal "BEN PEARSON"	2	82345
OPTIONAL EQUIPMENT			
	Oil Pan Package Includes:	1	82736
	Oil Pan Structure	1	82558
	Guide Structure (Roller)	2	82566
	Socket Head Set Screw 3/8-16NC x 3/4	4	100052
	Wheel w/Bushing	4	82571
	Bushing - Wheel (Replacement Only)	-	82570
	Hex Screw - Mt. Wheels-1/2-13NC x 3 1/2 Gr. 5	4	100296
	Flat Washer - Mt. Wheels-9/16 ID	4	100152
	Spacer Mt. Wheels	4	81569
	Nylock Nut Thin-Mt. Wheels-1/2-13 NC	4	100297
	Cover Str. - Oil Pan	1	82687
	Splash Pan Str.	1	82732
	Hex Nipple 1 NPT	1	100295
	Ball Valve	1	82565
	3 Phase Power Unit	1	82750
	Connecting Body 3 Phase	1	80140

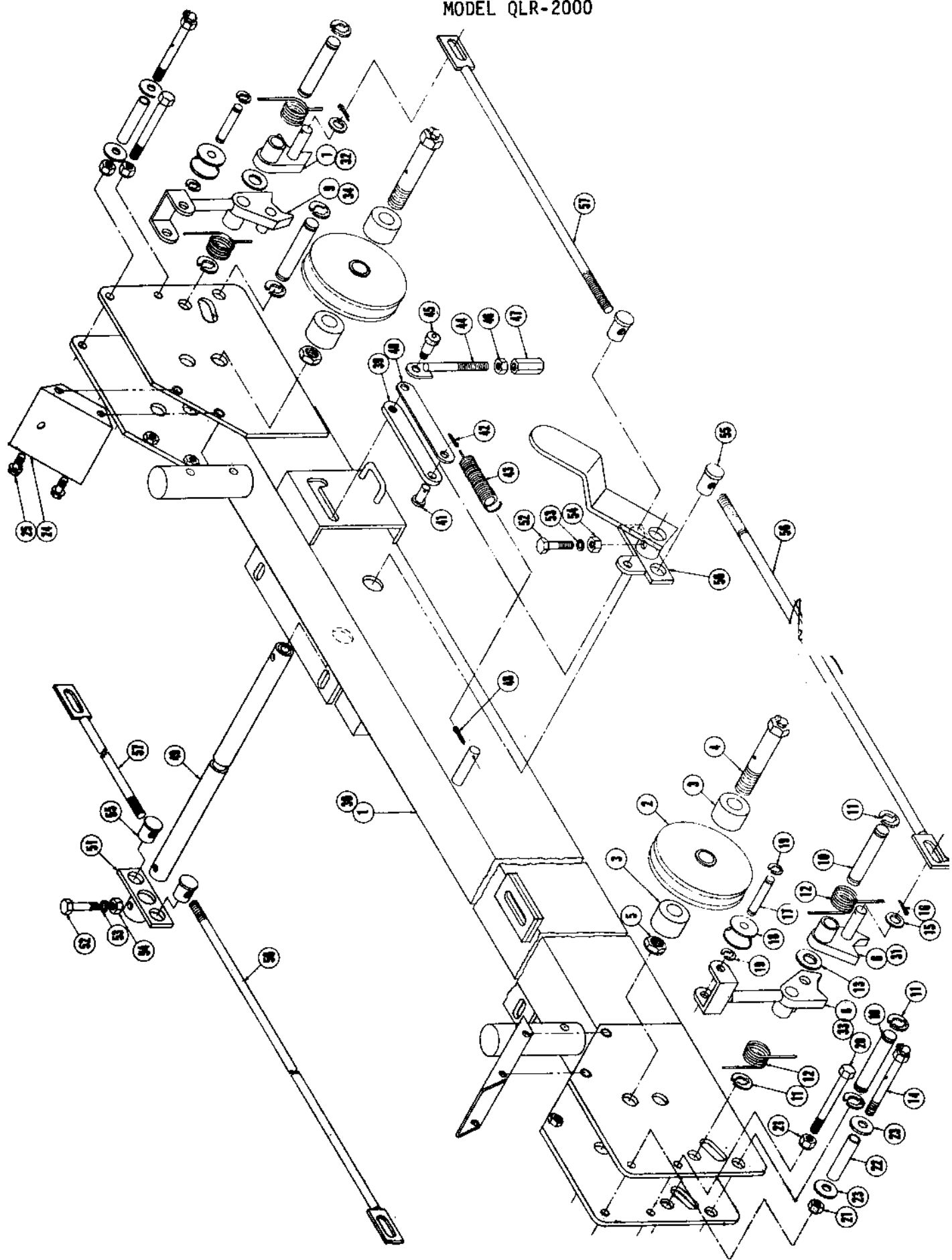


TRACK ASSEMBLY-LH
MODEL QLR 2000

Code	Part Name	Qty.	Part No.
-	TRACK ASSEMBLY - LH Consists OF:	1	82425
1	Track Structure - LH	1	82427
2	Hydraulic Cylinder	1	81311
3	Hair Pin Clip	1	100110
4	Pin - Cylinder	1	81312
5	Adapter - Cylinder	1	81313
6	Spacer - (Top-RH Front) 2.666 Lg.	1	81316
7	Spacer - (Bottom - LH Front) 2.291 Lg.	1	81315
8	Spacer - (Bottom) .547 Lg.	3	81317
9	Spacer - (Top) .922 Lg.	3	81314
10	Spacer - (Center-Rear) .734 Lg.	2	81323
11	Cable Sheave Assembly	6	82675
	1 - 82492 Sheave		
	1 - 82493 Bronze Bushing		
12	Hex Screw Assembly	2	82676
	1 - 100305 Lubrication Fitting		
13	Nylock Nut - Thin 3/4-16 NF	4	80034
14	Orifice w/Hole .086 Hole	1	81959
15	Plug - Breather 9/16 ORB	1	82130
16	Hex Screw Assembly	1	82678
	1 - 100305 Lubrication Fitting		
17	Hex Screw Assembly	1	82680
	1 - 100305 Lubrication Fitting		
18	90° Bulkhead Adapter Elbow 9/16 JIC	1	81318
19	Bulkhead Nut (Replacement Only) 9/16 JIC	1	60051
20	3/8 ID Hose Assembly 9/16 JIC	1	81320
21	90° O'Ring Elbow 9/16 ORB x 9/16 JIC	1	60368
22	Guide Structure - Cable	2	81414
#	Cable Ass'y. (Cyl. to LH Rear) 147.75 Long	1	82455
#	Cable Ass'y. (Cyl. to RH Rear) 206.59 Long	1	82456
#	Cable Ass'y. (Cyl. to LH Front) 352.50 Long	1	82457
#	Cable Ass'y. (Cyl. to RH Front) 412.38 Long	1	82458
#	Hex Nut - Nylock - (Cables) 3/4-10 NC	8	80427
#	NOT SHOWN		

QLR.max

FRONT CROSS TUBE
PIVOT TUBE
MODEL QLR-2000



FRONT CROSS TUBE
REAR CROSS TUBE
QLR-2000

Code	Part Name	Qty.	Part No.
-	FRONT CROSS TUBE ASSEMBLY - Consists Of: 1-25	1	82543
1	Front Cross Tube Structure	1	82466
2	Cable Sheave Assembly	2	82675
	1 - 82492 Sheave 5.00 OD		
	1 - 82493 Bronze Bushing .753 ID		
3	Spacer (1.00 Long)	4	81282
4	Hex Screw Assembly	2	82682
	1 - 81471 65° Grease Fitting - Drive		
5	Thin Nut - Nylock 3/4-16 NF	2	80034
6	Latch Structure - Catch (RH Front)	1	81068
7	Latch Structure - Catch (LH Front)	1	81069
8	Latch Structure - Slack Chain (RH Front)	1	81275
9	Latch Structure - Slack Chain (LH Front)	1	81276
10	Shaft 5/8 Dia.	4	81073
11	Retaining Ring 5/8	8	100276
12	Torsion Spring	4	81072
13	Flat Washer 13 Ga. (For 5/8)	2	100155
14	Hex Screw Assembly	2	81479
	1 - 81471 65° Grease Fitting - Drive		
15	Flat Washer 16 Ga. (For 1/2)	2	100062
16	Cotter Pin 1/8 x 3/4	2	100175
17	Shaft - Slack Chain 3/8 Dia.	2	81280
18	Roller - Slack Chain	2	81279
19	Retaining Ring 3/8	4	80683
20	Hex Screw 3/8-16NC x 4 Gr. 5	2	81081
21	Hex Nut Nylock 3/8-16NC	4	81082
22	Tube Spacer	2	81176
23	Flat Washer 1 1/4 x 13/32 x 1/8 Hardened	4	81206
24	Cover - Idler	2	81283
25	Flange Hd. Screw 5/16-18NC x 3/4	8	60912
-	Rear Cross Tube Ass'y. (Ref. Front Tube Layout)	1	82544
30*	Rear Cross Tube Structure	1	82465
2	Cable Sheave Assembly	2	82675
	1 - 82492 Sheave 5.00 OD		
	1 - 82493 Bronze Bushing .753 ID		
3	Spacer (1.00 Long)	4	81282
4	Hex Screw Assembly 3/4-16NF x 4 Gr. 5	2	82682
	1 - 81471 65° Grease Fitting - Drive		
5	Thin Nut - Nylock 3/4-16NF	2	80034
31*	Latch Structure - Catch (LH Rear)	1	81068
32*	Latch Structure - Catch (RH Rear)	1	81069
33*	Latch Structure - Slack Chain (RH Rear)	1	81276
34*	Latch Structure - Slack Chain (LH Rear)	1	81275
10	Shaft 5/8 Dia.	4	81073
11	Retaining Ring 5/8	8	100276
12	Torsion Spring	4	81072
13	Flat Washer 13 Ga. (For 5/8)	2	100155
14	Hex Screw Ass'y.	2	81479
	1 - 81471 65° Grease Fitting-Drive		
15	Flat Washer 16 Ga. (For 1/2)	2	100062
16	Cotter Pin 1/8 x 3/4	2	100175
17	Shaft - Slack Chain 3/8 Dia.	2	81280
*	Not Pictured Correctly		

FRONT CROSS TUBE
 REAR CROSS TUBE
 QLR-2000

Code	Part Name	Qty.	Part No.
18	Roller - Slack Chain	2	81279
19	Retaining Ring 3/8	4	80683
20	Hex Screw 3/8-16NC x 4 Gr. 5	2	81081
21	Hex Nut - Nylock 3/8-16NC	4	81082
22	Tube Spacer	2	81176
23	Flat Washer 1 1/4 x 13/32 x 1/8 Hardened	4	81206
24	Cover - Idler	2	81283
25	Flange Hd. Screw 5/16-18NC x 3/4	8	60912
-	PIVOT TUBE LINKAGE (See Front Cross Tube Layout)		
39	Bar - Tapped	1	81102
40	Bar	1	81101
41	Pin	1	81103
42	Cotter Pin 1/8 x 3/4	1	100175
43	Spring	1	100154
44	Rod Structure 3/8 Dia.	1	81251
45	Shoulder Screw	1	81107
46	Nut 3/8-16NC	1	100127
47	Nut - Special 3/8-16NC	1	81253
48	Cotter Pin 1/8 x 1	1	100190
49	Tube Structure-Pivot	1	82545
50	Handle Structure <i>Handle Assembly 83500</i>	1	81138
51	Pivot Structure	1	81092
52	Hex Screw 5/16-18NC x 1 1/2 Gr. 5	2	81483
53	Lock Washer 5/16	2	100159
54	Hex Nut 5/16-18NC	2	100102
55	Pin - Pivot	4	81095
56	Adjusting Rod Str. - Long	2	81113
57	Adjusting Rod Str. - Short	2	81115