

PANZITTA SALES & SERVICE

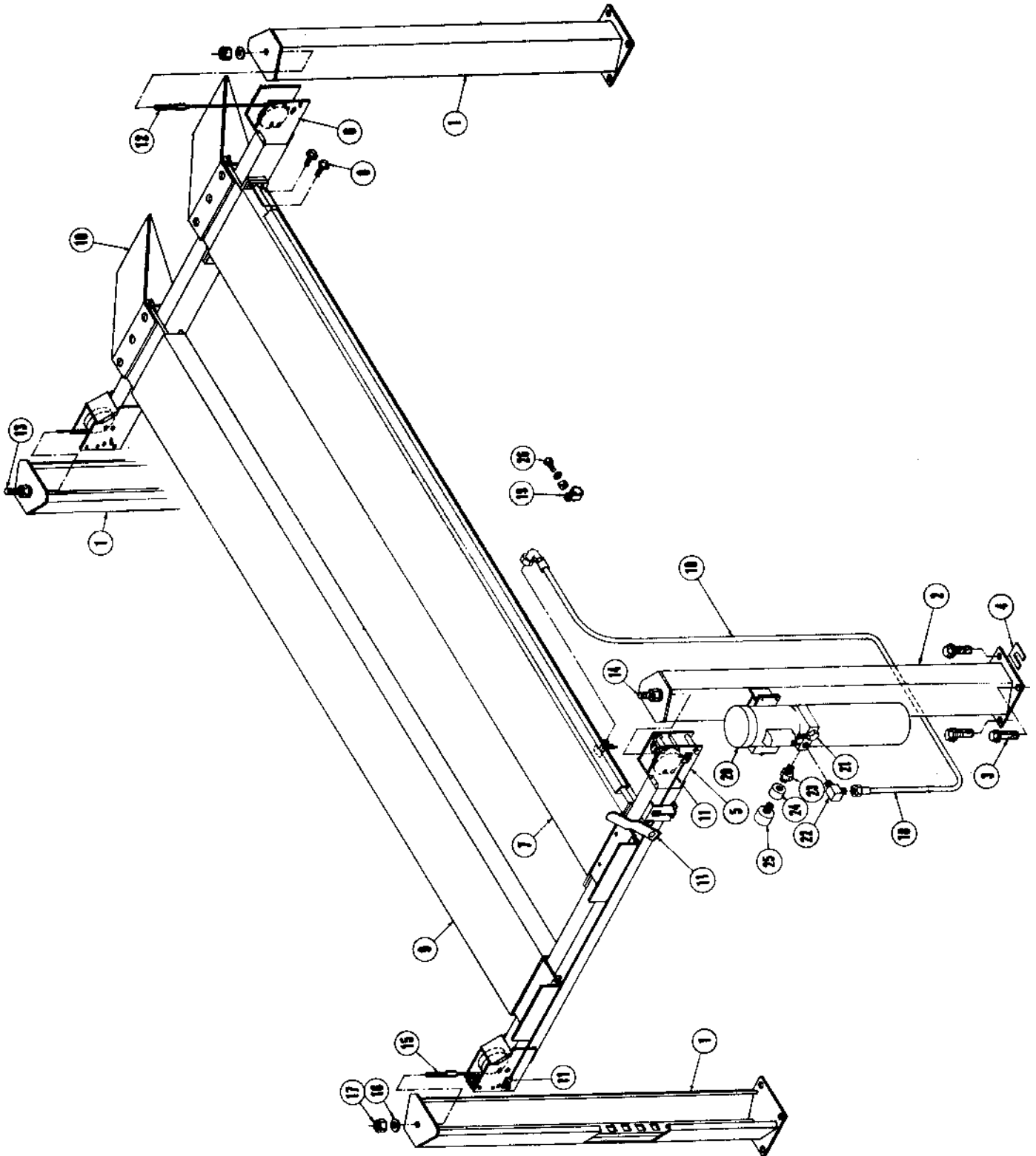
72 George Avenue

Wilkes-Barre, PA 18705

570-822-6720 800-822-6720

www.panzittasales.com

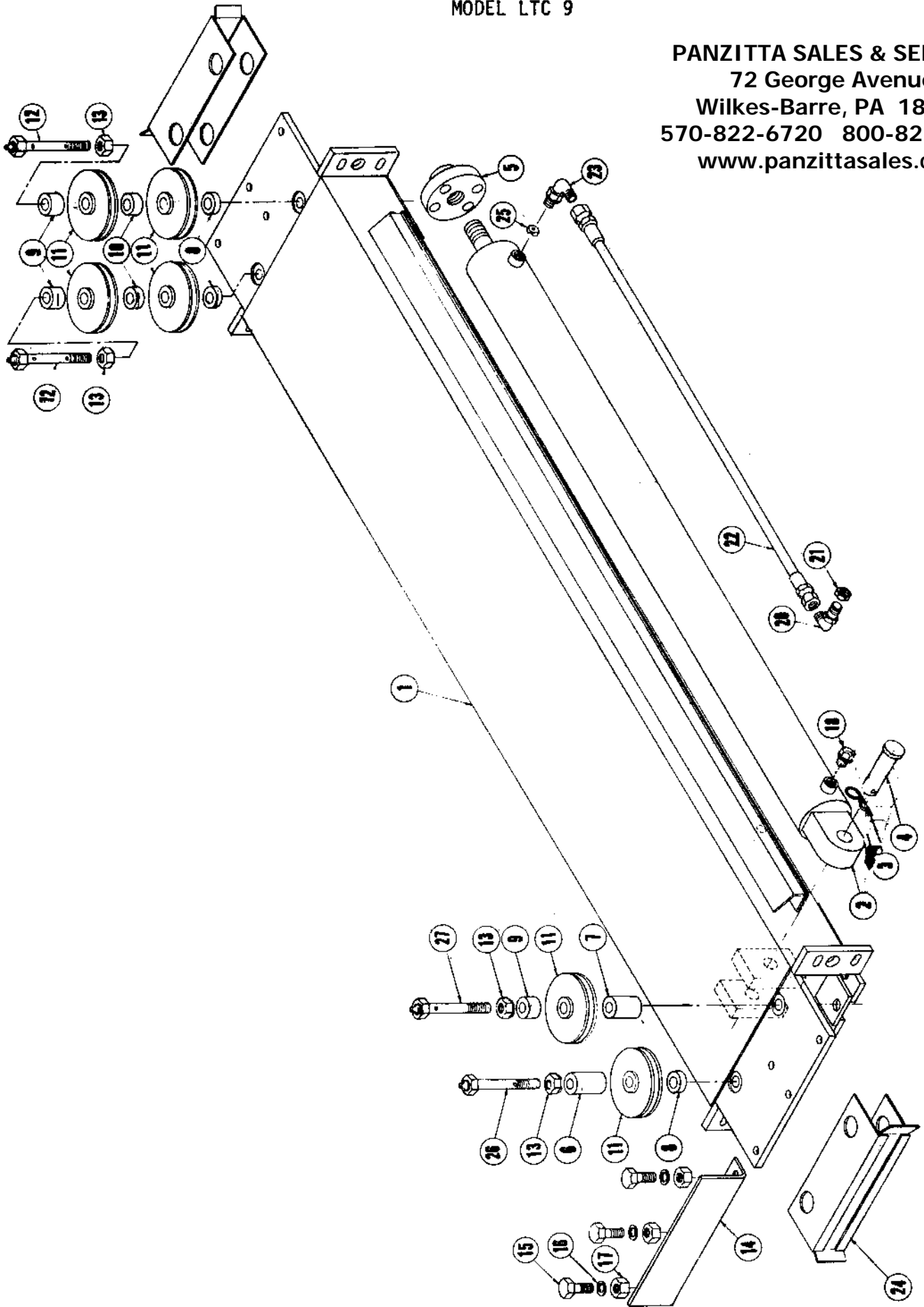
LIFT PARTS
MODEL LTC 9



LTC-9.max

TRACK ASSEMBLY - STATIONARY
MODEL LTC 9

PANZITTA SALES & SERVICE
72 George Avenue
Wilkes-Barre, PA 18705
570-822-6720 800-822-6720
www.panzittasales.com



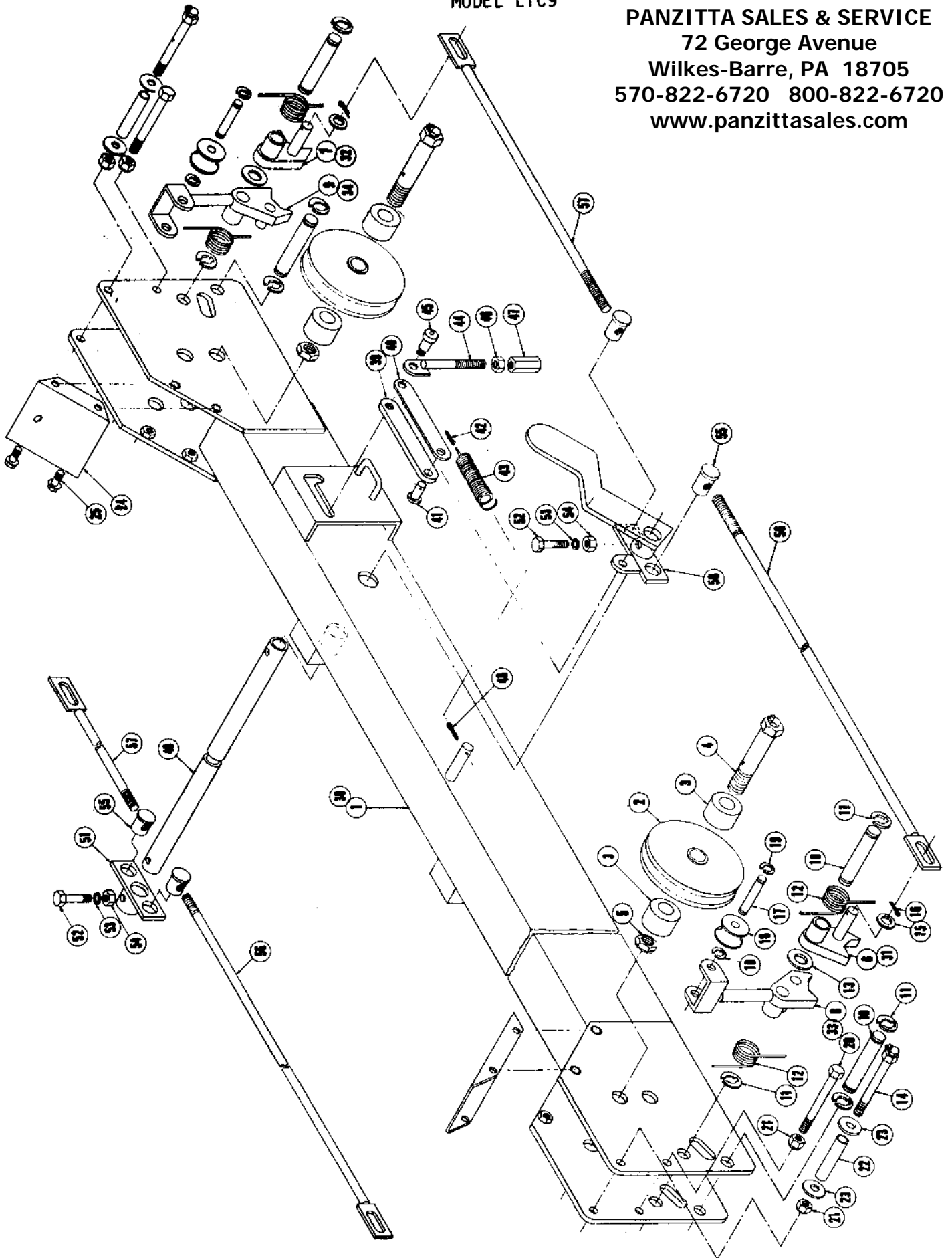
PANZITTA SALES & SERVICE
72 George Avenue
Wilkes-Barre, PA 18705
570-822-6720 800-822-6720
www.panzittasales.com

TRACK ASSEMBLY - STATIONARY
MODEL LTC 9

Code	Part Name	Qty.	Part No.
-	Track Assembly Stationary Consists Of:	1	81295
1	Track Structure - Stationary	1	81299
2	Hydraulic Cylinder	1	81311
3	Hair Pin Clip	1	100110
4	Pin - Cylinder	1	81312
5	Adapter - Cylinder	1	81313
6	Spacer - (Top RH-Front) 2.666 Lg.	1	81316
7	Spacer - (Bottom-LH Front) 2.291 Lg.	1	81315
8	Spacer - (Bottom) .547 Lg.	3	81317
9	Spacer - (Top) .922 Lg.	3	81314
10	Spacer (Center-Rear) .734 Lg.	2	81323
11	Cable Sheave Ass'y.	6	82675
12	Hex Screw Ass'y.	2	82675
13	Nylock Nut - Thin 3/4 - 16 NF	4	80034
14	Angle - Track Stop	1	80629
15	Hex Screw 1/2-13NC x 1 3/4 Gr. 5	3	80453
16	Lock Washer 1/2	3	100125
17	Hex Nut 1/2-13NC	3	100124
18	Plug - Breather (Replacement In Cyl.) 9/16 ORB	1	82130
20	90° Bulkhead Adapter Elbow 9/16 JIC	1	81318
21	Bulkhead Nut (Replacement Only) 9/16 JIC	1	60051
22	3/8 ID Hose Ass'y. 9/16 JIC	1	81320
23	90° O'Ring Elbow 9/15 ORB x 9/16 JIC	1	60368
24	Guide Str. - Cable	2	81414
#	Cable Ass'y. (Cyl. to LH Rear) 115.91 Long	1	81289
#	Cable Ass'y. (Cyl. to RH Rear) 178.38 Long	1	81290
#	Cable Ass'y. (Cyl. to LH Front) 296.69 Long	1	81291
#	Cable Ass'y. (Cyl. to RH Front) 360.18 Long	1	81292
#	Hex Nut - Nylock 3/4-10 NC	8	80427
25	Orifice w/Hole .086 Hole	1	81959
26	Hex Screw Assembly	1	82680
27	Hex Screw Assembly	1	82678
#	NOT SHOWN		

FRONT CROSS TUBE
PIVOT TUBE
MODEL LTC9

PANZITTA SALES & SERVICE
72 George Avenue
Wilkes-Barre, PA 18705
570-822-6720 800-822-6720
www.panzittasales.com



FRONT CROSS TUBE
REAR CROSS TUBE
MODEL LTC 9

Code	Part Name	Qty.	Part No.
-	FRONT CROSS TUBE ASSEMBLY - Consists Of: 1-25	1	81264
1	Front Cross Tube Structure	1	81266
2	Cable Sheave Assembly	2	82675
	1 - 82492 Sheave 5.00 OD		
	1 - 82493 Bronze Bushing .753 ID		
3	Spacer (1.00 Long)	4	81282
4	Hex Screw Assembly	2	82682
	1 - 81471 65° Grease Fitting - Drive		
5	Thin Nut - Nylock 3/4-16 NF	2	80034
6	Latch Structure - Catch (RH Front)	1	81068
7	Latch Structure - Catch (LH Front)	1	81069
8	Latch Structure - Slack Chain (RH Front)	1	81275
9	Latch Structure - Slack Chain (LH Front)	1	81276
10	Shaft 5/8 Dia.	4	81073
11	Retaining Ring 5/8	8	100276
12	Torsion Spring	4	81072
13	Flat Washer 13 Ga. (For 5/8)	2	100155
14	Hex Screw Assembly	2	81479
	1 - 81471 65° Grease Fitting - Drive		
15	Flat Washer 16 Ga. (For 1/2)	2	100062
16	Cotter Pin 1/8 x 3/4	2	100175
17	Shaft - Slack Chain 3/8 Dia.	2	81280
18	Roller - Slack Chain	2	81279
19	Retaining Ring 3/8	4	80683
20	Hex Screw 3/8-16NC x 4 Gr. 5	2	81081
21	Hex Nut Nylock 3/8-16NC	4	81082
22	Tube Spacer	2	81176
23	Flat Washer 1 1/4 x 13/32 x 1/8 Hardened	4	81206
24	Cover - Idler	2	81283
25	Flange Hd. Screw 5/16-18NC x 3/4	8	60912
-	Rear Cross Tube Ass'y. (Ref. Front Tube Layout)	1	81265
30*	Rear Cross Tube Structure	1	81267
2	Cable Sheave Assembly	2	82675
	1 - 82492 Sheave 5.00 OD		
	1 - 82493 Bronze Bushing .753 ID		
3	Spacer (1.00 Long)	4	81282
4	Hex Screw Assembly 3/4-16 NF x 4 Gr. 5	2	82682
	1 - 81471 65° Grease Fitting - Drive		
5	Thin Nut - Nylock 3/4-16 NF	2	80034
31*	Latch Structure - Catch (LH Rear)	1	81068
32*	Latch Structure - Catch (RH Rear)	1	81069
33*	Latch Structure - Slack Chain (RH Rear)	1	81276
34*	Latch Structure - Slack Chain (LH Rear)	1	81275
10	Shaft 5/8 Dia.	4	81073
11	Retaining Ring 5/8	8	100276
12	Torsion Spring	4	81072
13	Flat Washer 13 Ga. (For 5/8)	2	100155
14	Hex Screw Ass'y.	2	81479
	1 - 81471 65° Grease Fitting - Drive		
15	Flat Washer 16 Ga. (For 1/2)	2	100062
16	Cotter Pin 1/8 x 3/4	2	100175
17	Shaft - Slack Chain 3/8 Dia.	2	81280
*	Not Pictured Correctly	5	

PANZITTA SALES & SERVICE
72 George Avenue
Wilkes-Barre, PA 18705
570-822-6720 800-822-6720
www.panzittasales.com

REAR CROSS TUBE
PIVOT TUBE LINKAGE
MODEL LTC 9

Code	Part Name	Qty.	Part No.
18	Roller - Slack Chain	2	81279
19	Retaining Ring 3/8	4	80683
20	Hex Screw 3/8-16NC x 4 Gr. 5	2	81081
21	Hex Nut - Nylock 3/8-16NC	4	81082
22	Tube Spacer	2	81176
23	Flat Washer 1 1/4 x 13/32 x 1/8 Hardened	4	81206
24	Cover - Idler	2	81283
25	Flange Hd. Screw 5/16-18NC x 3/4	8	60912
-	Pivot Tube Linkage (See Front Cross Tube Layout)	1	
39	Bar - Tapped	1	81102
40	Bar	1	81101
41	Pin	1	81103
42	Cotter Pin 1/8 x 3/4	1	100175
43	Spring	1	100154
44	Rod Structure 3/8 Dia.	1	81251
45	Shoulder Screw	1	81107
46	Nut 3/8-16NC	1	100127
47	Nut - Special 3/8-16NC	1	81253
48	Cotter Pin 1/8 x 1	1	100190
49	Tube Structure - Pivot	1	81284
50	Handle Structure <i>Handle Assembly 25320</i>	1	81138
51	Pivot Structure	1	81092
52	Hex Screw 5/16-18NC x 1 1/2 Gr. 5	2	81483
53	Lock Washer 5/16	2	100159
54	Hex Nut 5/16-18NC	2	100102
55	Pin - Pivot	4	81095
56	Adjusting Rod Str. - Long	2	81285
57	Adjusting Rod Str. - Short	2	81287