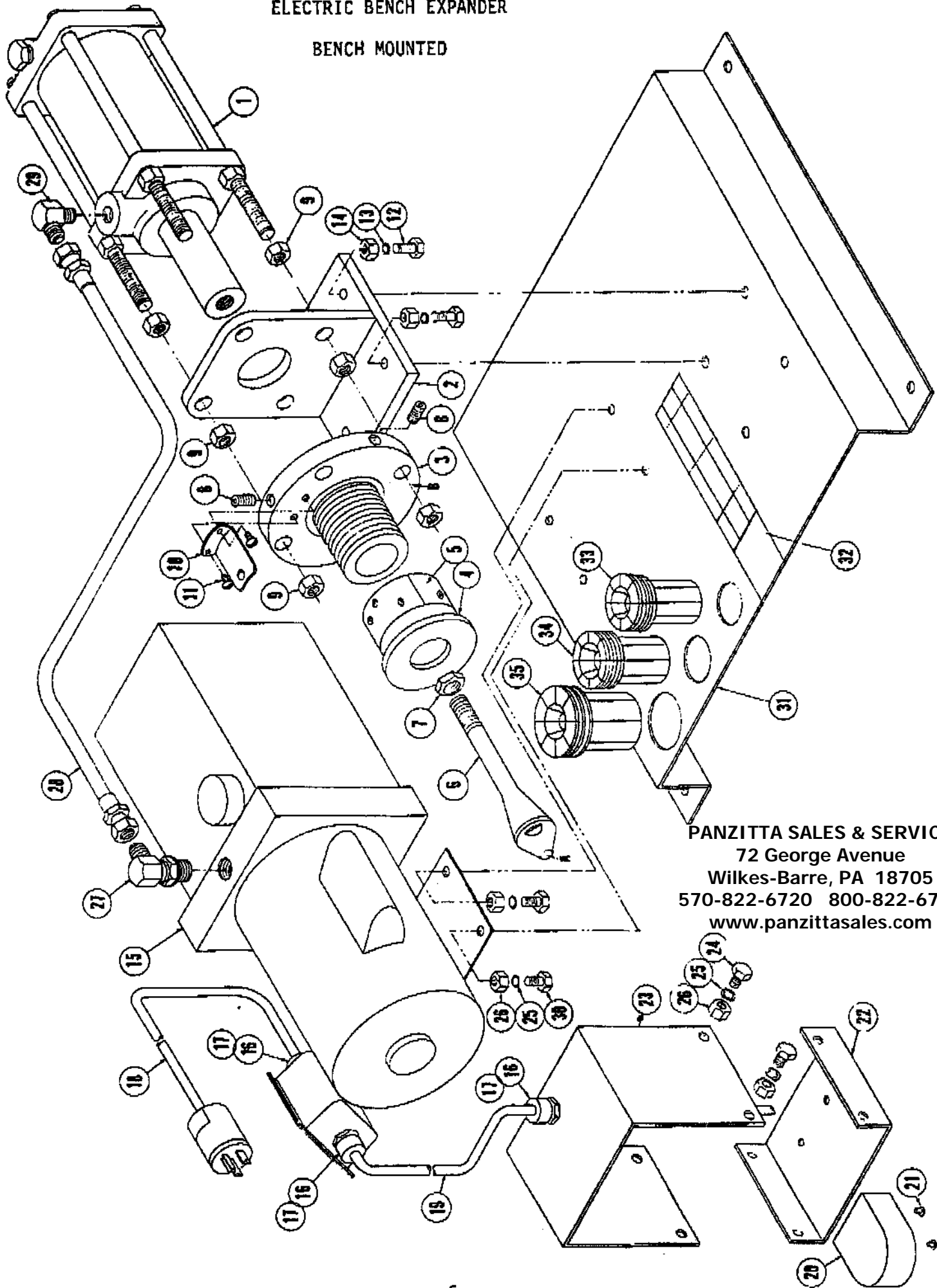


ELECTRIC BENCH EXPANDER

BENCH MOUNTED



PANZITTA SALES & SERVICE
72 George Avenue
Wilkes-Barre, PA 18705
570-822-6720 800-822-6720
www.panzittasales.com

ELECTRIC BENCH EXPANDER #61560
BENCH MOUNTED

Code	Part Name	Qty.	Part No.
1	Hydraulic Cylinder	1	61574
2	Cylinder Mount Structure	1	61575
3	Adjustment Bolt & Adapter Assembly	1	61580
4	Adjustment Nut Structure	1	61216
5	Decal - Acme Nut Setting	1	61223
6	Arbor	1	61713
7	Hex Jam Nut	2	100038
8	Socket Hd. Set Screw (Included in 80580) 3/8-16NC x 3/4	2	100052
9	Hex Nut (1/2-13NC Cross-100124) 1/2-20 NF Lantex	8	100157
10	Sight Gauge Structure	1	61204
11	Round Head Mach. Screw #10-24 x 3/8	2	100108
12	Hex Screw 3/8-16NC x 1 1/4 Gr. 5	4	100012
13	Lock Washer 3/8	4	100119
14	Hex Nut 3/8-16NC	4	100127
15	Power Unit 1/2 HP 1 Ph. 115v 60 Hz	1	61562
16	Strain Relief Bushing	3	61101
17	Conduit Lock Nut 1/2 NPT	3	61102
18	Power Cord Assembly	1	61570
19	Cord Assembly 72 Long	1	61572
20	Foot Switch	1	61065
21	Flat Hd. Sheet Metal Screw #4 x 1/2	2	61080
23	Cover Structure Foot Switch	1	61965
25	Lock Washer 5/16	4	100159
26	Hex Nut 5/16-18NC	4	100102
27	90° Elbow - Male 3/4-16 SAE x 9/16 JIC	1	61763
28	Hose Assembly 3/8 ID 16 1/2 Long	1	61583
29	90° Elbow - Male 9/16 JIC x 1/2 NPT	1	60053
30	Hex Screw 5/16-18NC x 1	4	100111
31	Base	1	61563
32	Decal - Expander Chart	1	61222
33	Female Expander 1 13/16 OD Thru 1 3/4 ID	1	61219
34	Female Expander 1 29/32 OD Thru 2 ID	1	61220
35	Female Expander 2 1/4 OD Thru 2 1/2 ID	1	61221
#	O-Ring Kit (Replacement On Expanders)	1	61228
	Seal Kit (Cross Cylinder)		62004
	Seal Kit (Lantex Cylinder)		61596
#	NOT SHOWN		

PANZITTA SALES & SERVICE
72 George Avenue
Wilkes-Barre, PA 18705
570-822-6720 800-822-6720
www.panzittasales.com